



**Connells**

School Road  
Tettenhall Wood Wolverhampton



# School Road Tettenhall Wood Wolverhampton WV6 8ES

for sale offers in the region of  
**£300,000**



## Property Description

Connells Wolverhampton are please to bring to market this three bedroom home set within the heart of Tettenhall Wood,

This generous three-bedroom semi-detached home offers fantastic scope for extension, or reconfiguration (subject to planning permission).

The property boasts spacious living areas, kitchen, outbuilding to rear with plumbing, three spacious bedrooms, family bathroom, and generous front and rear garden.

Property comes with no upward chain and is the ideal first time purchase, or family home. Viewing is highly advised.

## Location And Area

This Property is located in the massively popular Tettenhall Wood area of Wolverhampton. Nearby is Tettenhall Village which offers a range of bars, restaurants, shops, banks. Also nearby there is a selection of dentists, doctors and local schooling. The popular National trust property Wightwick Manor is also a short distance away.

## Entracne Hall

Double glazed door to side, double glazed window, stairs, understairs storage cupboard, door to lounge.

## Lounge

13' 10" x 12' 6" ( 4.22m x 3.81m )

Double glazed window to front, feature fire place housing the log burner, door to kitchen diner.

## Kitchen Diner

Base units with worksurfaces, sink drainer, two double glazed windows to front and rear, integrated electric oven and electric hob, space for domestic appliances as well as a log burner, unerstairs storage cupboard, double glazed door leading to utility.

## Utility/ Side Entry

Access to wc, storage cupboard, double glazed doors to side, double glazed window to rear, sink drainer, worksurfaces, space for domestic appliances.



## First Floor Landing

Stairs, loft access, cupboard, doors to various rooms.

## Bedroom One

11' 5" x 6' 10" ( 3.48m x 2.08m )

Double glazed window, storage heater.

## Bedroom Two

13' 4" x 11' 8" ( 4.06m x 3.56m )

Double glazed window, storage heater.

## Bedroom Three

11' 11" x 9' 11" ( 3.63m x 3.02m )

Double glazed window, storage heater.

## Shower Room

Double shower cubicle, complimentary tiling, double glazed window to side, wc, wash hand basin.

## Outside Front

Lawned area with borders and shrubs, pathway to property.

## Outside Rear

Enclosed rear garden, lawned area, borders and shrubs, patio and shed.



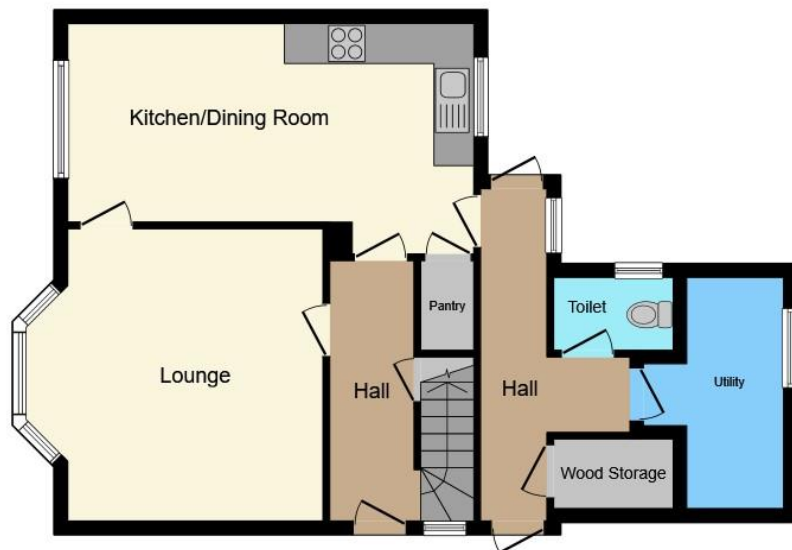












**Ground Floor**



**First Floor**

**Total floor area 110.3 m<sup>2</sup> (1,188 sq.ft.) approx**

This floor plan is for illustrative purposes only. It is not drawn to scale. Any measurements, floor areas (including any total floor area), openings and orientation are approximate. No details are guaranteed, they cannot be relied upon for any purpose and they do not form part of any agreement. No liability is taken for any error, omission or misstatement. A party must rely upon its own inspection(s). Powered by [www.propertybox.io](http://www.propertybox.io)



To view this property please contact Connells on

**T 01902 710 170**  
**E [wolverhampton@connells.co.uk](mailto:wolverhampton@connells.co.uk)**

81-83 Darlington Street  
 WOLVERHAMPTON WV1 4EX

EPC Rating: F Council Tax  
 Band: B

Tenure: Freehold

**view this property online [connells.co.uk/Property/WVH332968](http://connells.co.uk/Property/WVH332968)**



1. MONEY LAUNDERING REGULATIONS Intending purchasers will be asked to produce identification documentation at a later stage and we would ask for your co-operation in order that there will be no delay in agreeing the sale. 2. These particulars do not constitute part or all of an offer or contract. 3. The measurements indicated are supplied for guidance only and as such must be considered incorrect. Potential buyers are advised to recheck measurements before committing to any expense. 4. We have not tested any apparatus, equipment, fixtures, fittings or services and it is in the buyers interest to check the working condition of any appliances.

Connells Residential is registered in England and Wales under company number 1489613, Registered Office is Cumbria House, 16-20 Hockliffe Street, Leighton Buzzard, Bedfordshire, LU7 1GN. VAT Registration Number is 500 2481 05.

**See all our properties at [www.connells.co.uk](http://www.connells.co.uk) | [www.rightmove.co.uk](http://www.rightmove.co.uk) | [www.zoopla.co.uk](http://www.zoopla.co.uk)**

Property Ref: WVH332968 - 0003