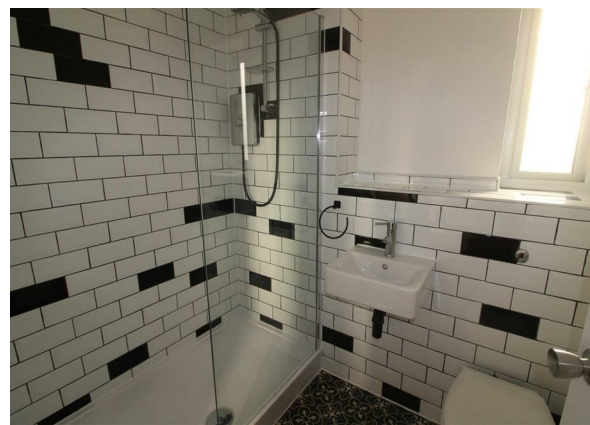


Abbotswood, Yate, BS37 4NF

£900 Per Month

Council Tax Band: A

**OH**  
Open House  
estate agents



We are pleased to present this second floor one bedroom apartment in Abbotswood, Yate. Close to local amenities this property is sure to appeal to single professionals or couples.

The accommodation consists of a lounge, kitchen, bathroom, bedroom and hallway.

There is the opportunity to have a garage with the property for an extra £50 pcm.

Sorry but No Pets.

No Smokers.

An income of £27,000 per year is required for this property.

Full referencing and ID checks will apply.

The property has a council tax band of A

Rent £900 per month

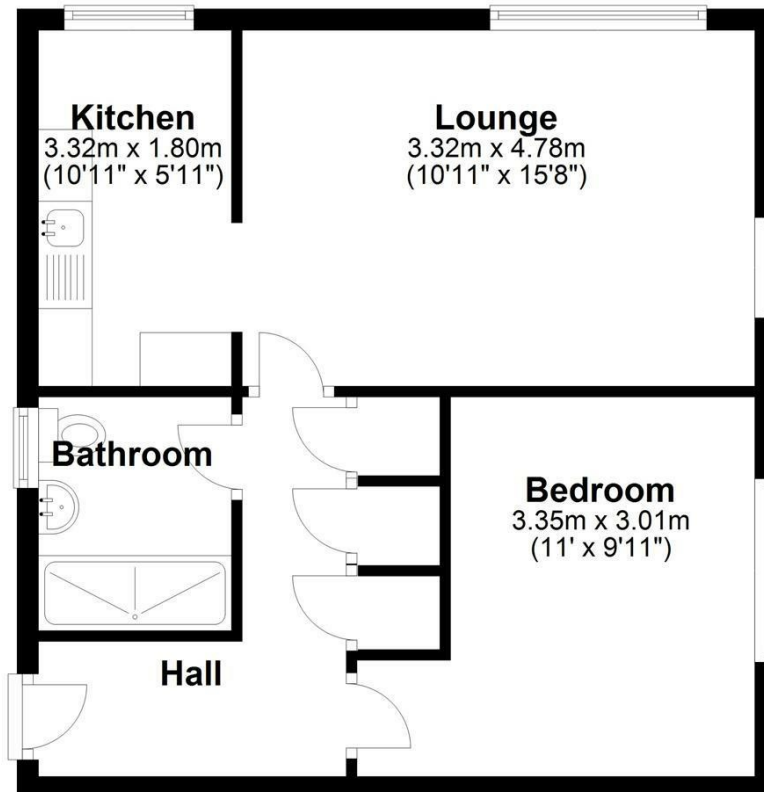
Deposit £1038

Holding deposit £207



Open House Bristol North East

## Floor Plan



Energy Efficiency Rating		Current	Potential
Very energy efficient - lower running costs			
(92 plus) A			
(81-91) B			
(69-80) C			
(55-68) D		68	73
(39-54) E			
(21-38) F			
(1-20) G			
Not energy efficient - higher running costs			
England & Wales		EU Directive 2002/91/EC	