



242 Leeds Road, Bradford, BD2 3JU
£1,200 Per Calendar Month

This is a gorgeous semi-detached house which offers a perfect blend of comfort and convenience. Spanning an impressive 926 square feet, the property boasts two inviting reception rooms, kitchen and outdoor space to both the front and back.

The home features 2 double bedrooms, and a smaller third bedroom, providing ample space for families or those seeking a home office. The single bathroom is thoughtfully designed, catering to the needs of modern living.

Locate

The Property Experts

Locate Properties UK LTD

29-31 North Parade, Bradford, West Yorkshire, BD1 3JL

t. +44 (0) 01274 720 900

 @locatehomesbfd

e. info@locatehomes.co.uk



www.locatehomes.co.uk

Registered in England & Wales No. 5161728

Front Elevation



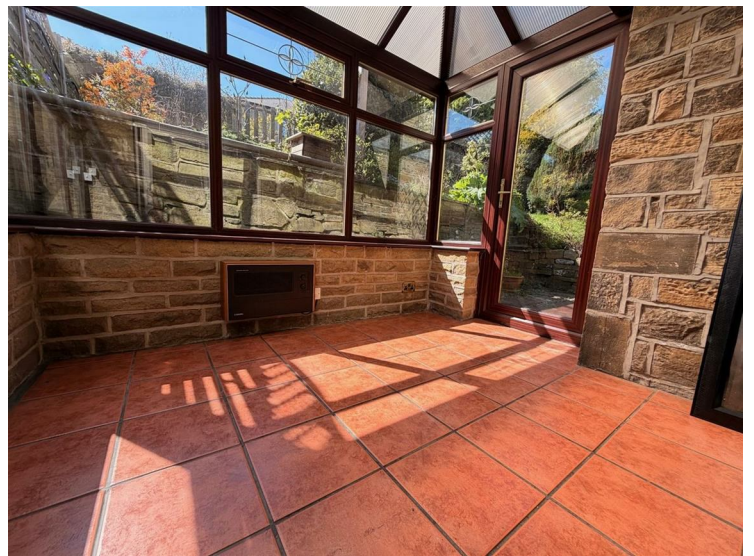
Reception Room 2



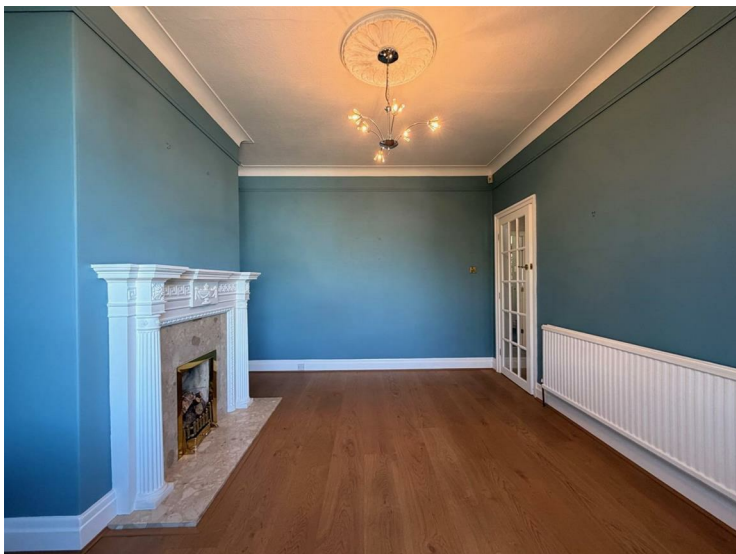
Reception Room 1



Conservatory



Reception Room Angle 2



Kitchen



Kitchen Angle 2



Hallway & Stairs



Kitchen Angle 3



Bedroom 1



Kitchen Angle 4



Bedroom 1 Angle 2



Bedroom 1 Angle 3

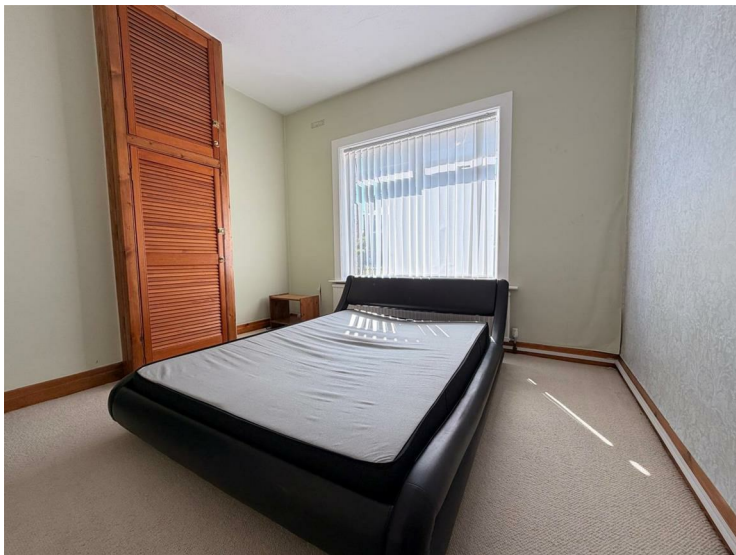


Bedroom 3



Bedroom 1 Angle 4

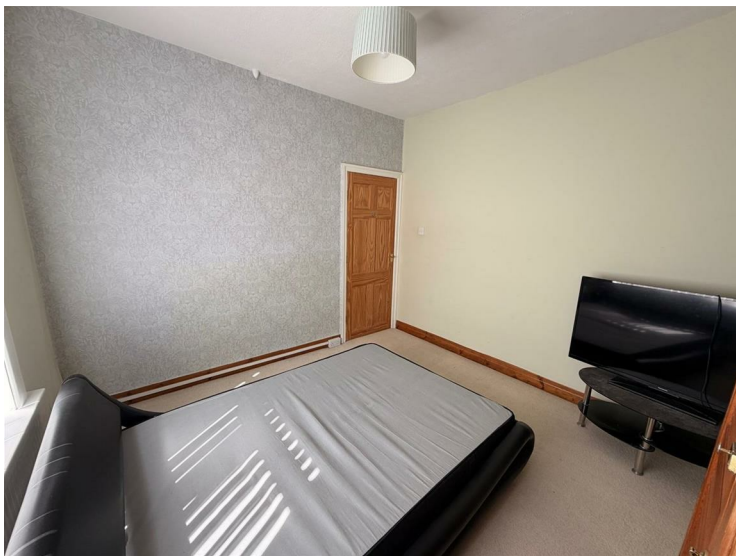
Bedroom 2



Bedroom 3 Angle 2



Bedroom 2 Angle 2



Family Bathroom



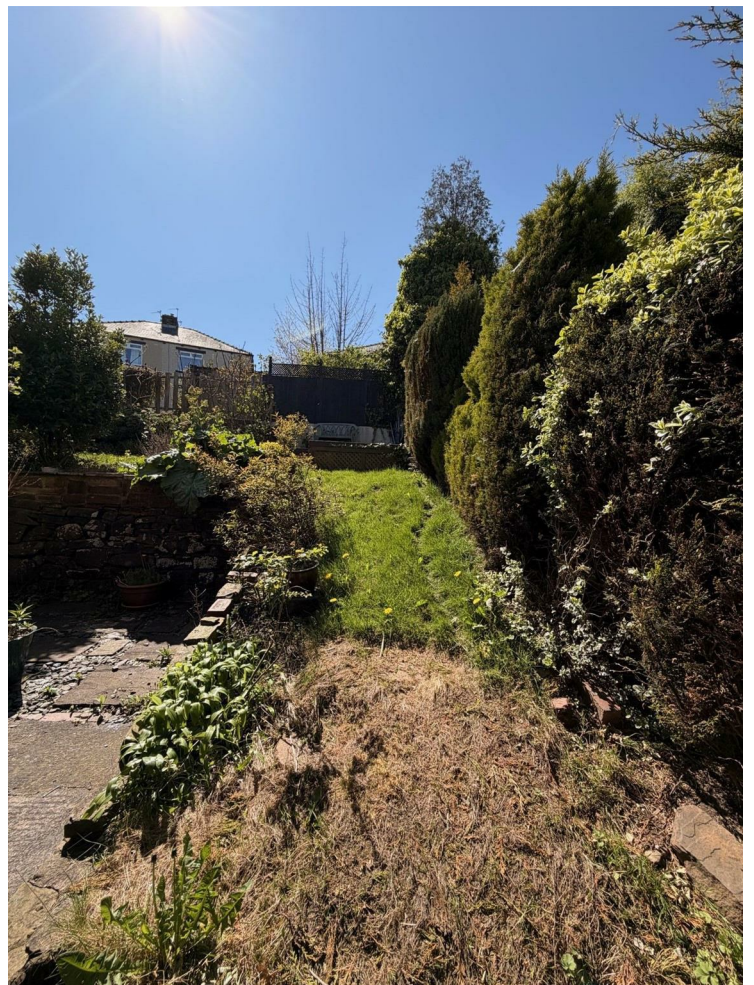
Family Bathroom Angle 2



Family Bathroom Angle 4



Back Elevation

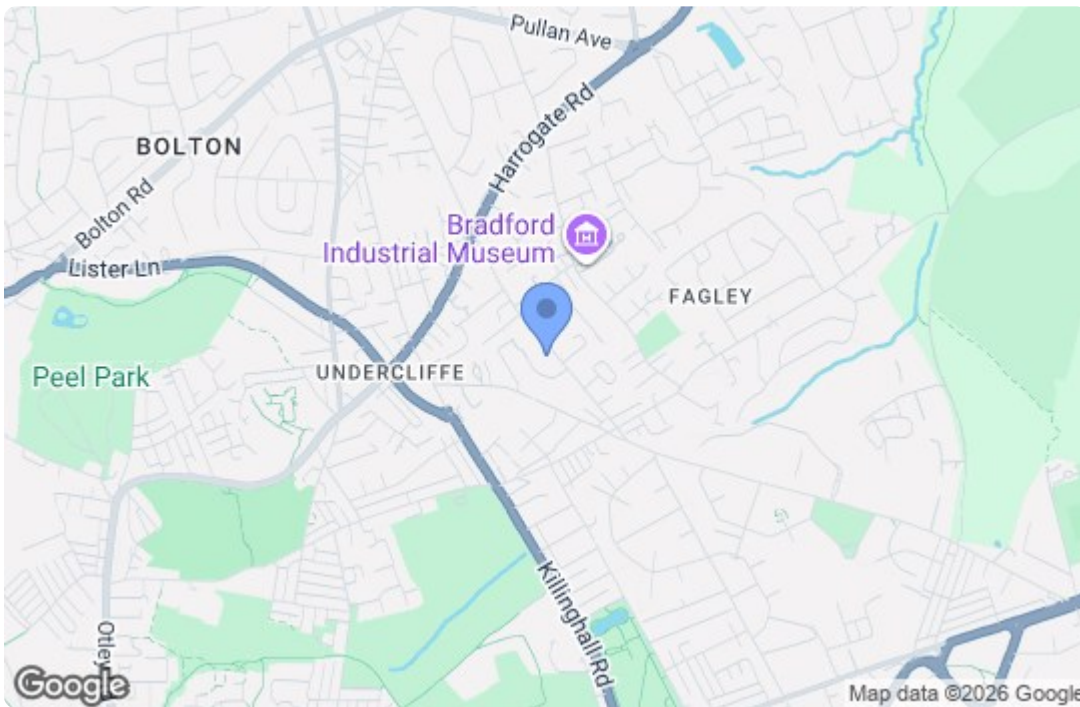


Family Bathroom Angle 3



Back Elevation Angle 2





Energy Efficiency Rating		Current	Potential
Very energy efficient - lower running costs			
(92 plus) A			
(81-91) B			
(69-80) C			
(55-68) D			
(39-54) E			
(21-38) F			
(1-20) G			
Not energy efficient - higher running costs			
England & Wales			
EU Directive 2002/91/EC			
Environmental Impact (CO ₂) Rating			
Very environmentally friendly - lower CO ₂ emissions			
(92 plus) A			
(81-91) B			
(69-80) C			
(55-68) D			
(39-54) E			
(21-38) F			
(1-20) G			
Not environmentally friendly - higher CO ₂ emissions			
England & Wales			
EU Directive 2002/91/EC			