



Wensleydale Road, TW12

£1,795,000

Dexters



Wensleydale Road, TW12

A substantial and impeccably presented five bedroom detached family home, occupying a generous plot with a private landscaped garden and planning permission granted for two dormers.

A beautifully arranged home centred around impressive open-plan living, where a generous reception space flows effortlessly into a bright dining area, with doors opening onto the garden to create a seamless indoor-outdoor feel.

The kitchen is well-appointed with excellent storage, complemented by a separate utility room and pantry. A versatile playroom and additional ground floor bedroom suite with Strachan wall bed offer flexibility for modern family life or home working. Upstairs, four well-proportioned bedrooms include a spacious principal, all served by family bathroom facilities.

Outside, the private rear garden features a large lawn, patio seating area and a detached summer house, ideal as a home office or studio, while the front offers plenty of parking and an integral garage. Air con throughout is a huge bonus.

Wensleydale Road is a premier road in Hampton village, moments from Carlisle Park and a short walk to Hampton train station. You will also find many well regarded schools locally, both state and private, within walking distance.

Features

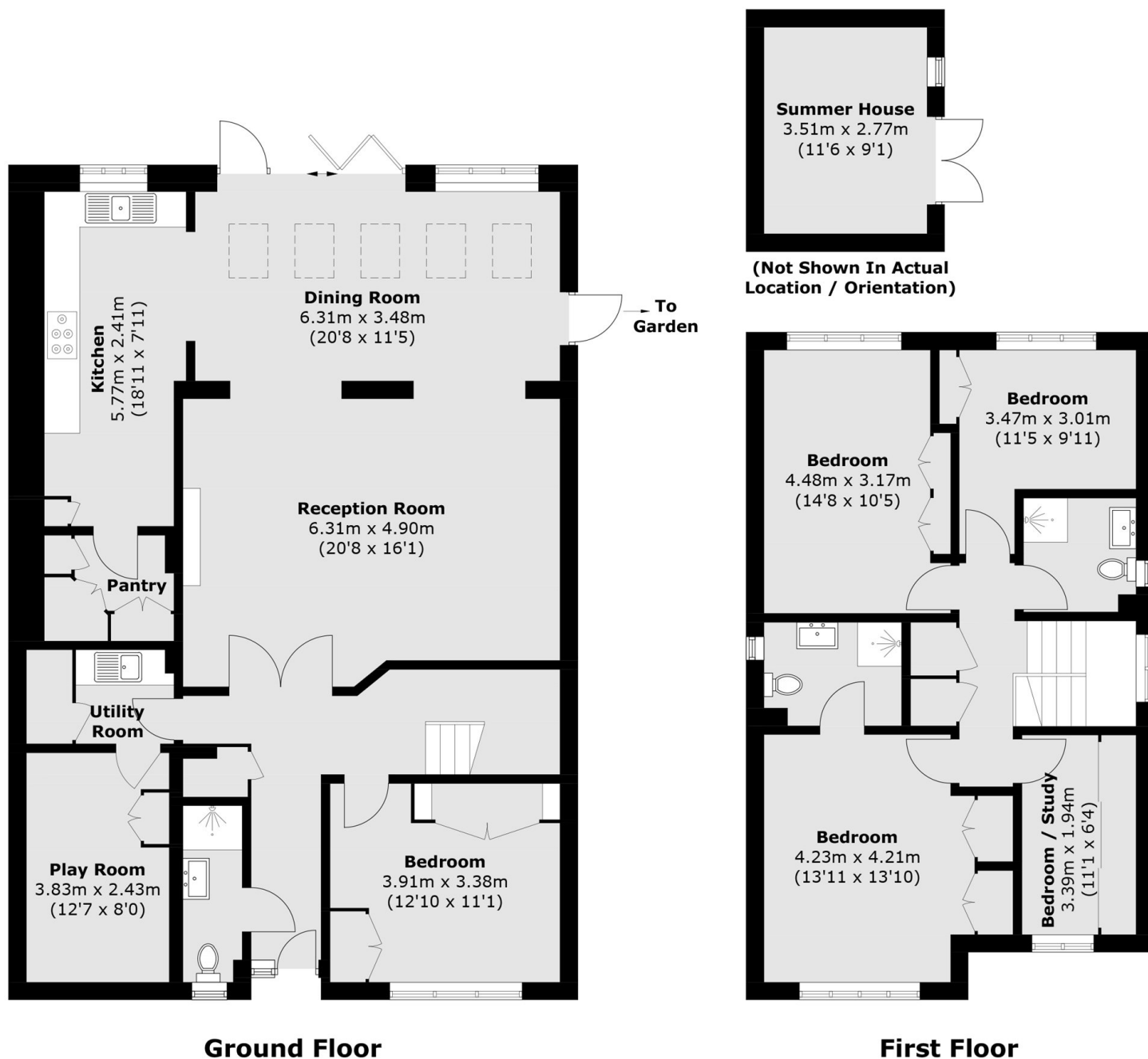
- Detached
- Five Bedrooms
- Off Street Parking
- West Facing Garden
- Utility Room
- Scope To Extend







Wensleydale Road, Hampton, TW12



Total area (approx.): 186.0 sq. m (2,002 sq. ft)
Summer House: 9.9 sq. m (106.6 sq. ft)