



Ditchling Road, Brighton, BN1 4SD
Asking Price £275,000

Ditchling Road, Brighton, BN1 4SD

A charming two-bedroom maisonette, forming part of an attractive period building on Ditchling Road. Boasting an open-plan living space, modern kitchen, and two double bedrooms, it's ideally located just half a mile from Brighton Station.

Forming part of an attractive period building on the sought-after Ditchling Road, this stylish two-bedroom maisonette presents an exceptional opportunity for buyers seeking a centrally located home with modern comforts. Spanning the first and second floors, this property offers a well-designed layout, perfect for contemporary living, all within a generous 518 sq ft.

Upon entering, you are greeted by an inviting open-plan living space, which seamlessly incorporates a modern fitted kitchen. This bright and airy area is the heart of the home, providing a versatile environment for relaxation, dining, and entertaining. The kitchen itself is thoughtfully designed with sleek cabinetry, ample worktop space, and integrated appliances, ensuring both functionality and aesthetic appeal. It is a perfect setting for preparing meals whilst remaining connected with guests or family in the living area.

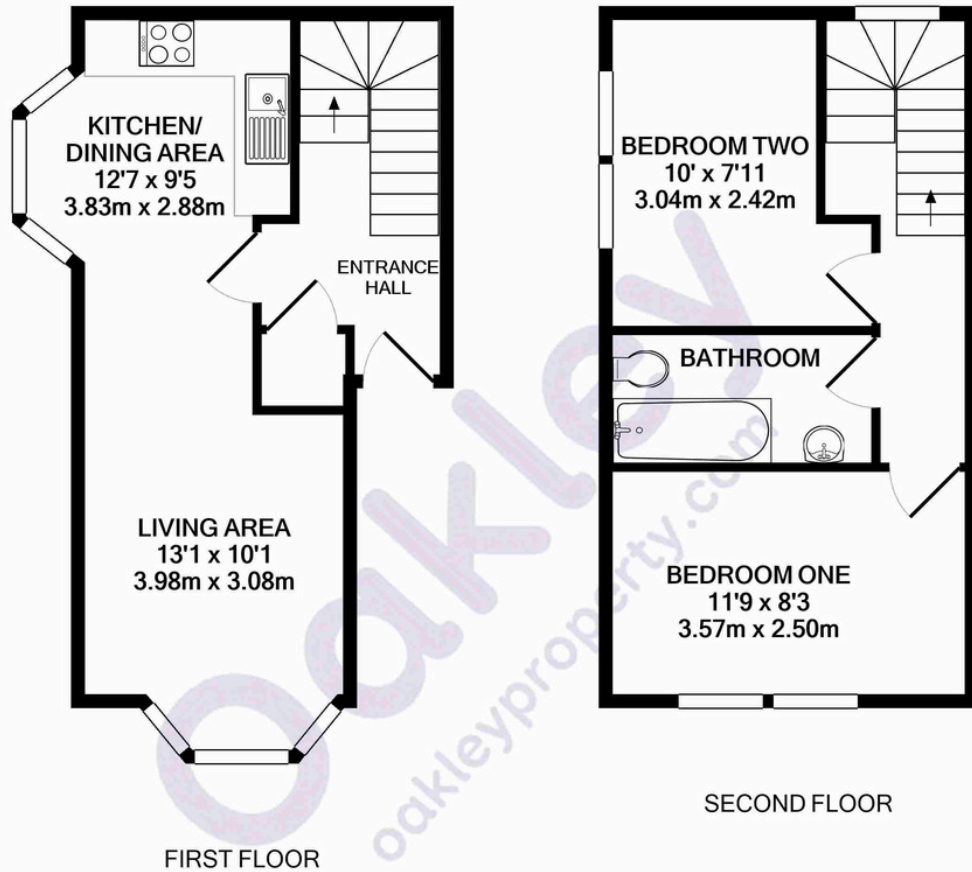
The maisonette features two comfortable double bedrooms, offering peaceful retreats at the end of the day. Each bedroom is well-proportioned, providing sufficient space for furniture and personal touches, making them ideal for residents or guests. The property also benefits from a modern bathroom, finished to a high standard with contemporary fixtures and fittings, providing a serene space for daily routines.

Comfort is assured year-round with gas central heating installed throughout the property, ensuring a warm and inviting atmosphere regardless of the season. The thoughtful layout maximises every inch of the 518 sq ft, creating a sense of spaciousness and practicality.

One of the most compelling aspects of this property is its central location on Ditchling Road. Residents will benefit from excellent access to a wide array of local amenities, including independent shops, cafes, restaurants, and vibrant cultural attractions that Brighton is renowned for. Furthermore, for commuters or those who enjoy exploring beyond the city, Brighton Station is conveniently located just half a mile away, offering direct links to London and other major destinations.

This maisonette represents an ideal purchase for first-time buyers, young professionals, or investors looking for a well-appointed property in a prime Brighton location. Its blend of period charm and modern interiors, coupled with its enviable proximity to transport links and city amenities, makes it a truly desirable home.





DITCHLING ROAD, BRIGHTON BN1 4SD
 TOTAL APPROX. FLOOR AREA 581 SQ.FT. (54.0 SQ.M.)
 Made with Metropix ©2019

Agents Notes
 Tenure Leasehold
 Approx 166 Years Remaining On The Lease
 Service Charge Approx £580 Per Annum
 Ground Rent N/A
 Council Tax Band B

Energy Performance Certificate

Score	Energy rating	Current	Potential
92+	A		
81-91	B		
69-80	C		
55-68	D	66 D	72 C
39-54	E		
21-38	F		
1-20	G		



Please note:
 These details have been produced in good faith and are believed to be accurate based upon the information supplied but they are not intended to form part of a contract. All statements contained in these particulars as to this property are made without responsibility on the part of Oakley, the vendors or lessors and are NOT to be relied on as statements or representations of fact. Any intending purchasers must satisfy themselves by inspection or otherwise as to the correctness of each of the statements contained in these particulars. The vendors, Oakley and any person who work in their employment do not have any authority to make or give any representation or warranty. The floor plan is for illustrative purposes only and the accuracy cannot be relied upon or guaranteed and no responsibility is taken for an error, omission or mis-statement. The total floor area shown has been taken from the EPC.



Oakley

Your Sussex Property Expert

Brighton & Hove Office
 01273 688 881
 30-31 Foundry Street, Brighton BN1 4AT
 www.oakleyproperty.com
 sales@oakleyproperty.com

We also have offices in:
 Shoreham by Sea
 Lewes Town & Country



A new way of marketing property

Get in touch to book a viewing or valuation of your own property

