



Lee Street, E8

£575,000

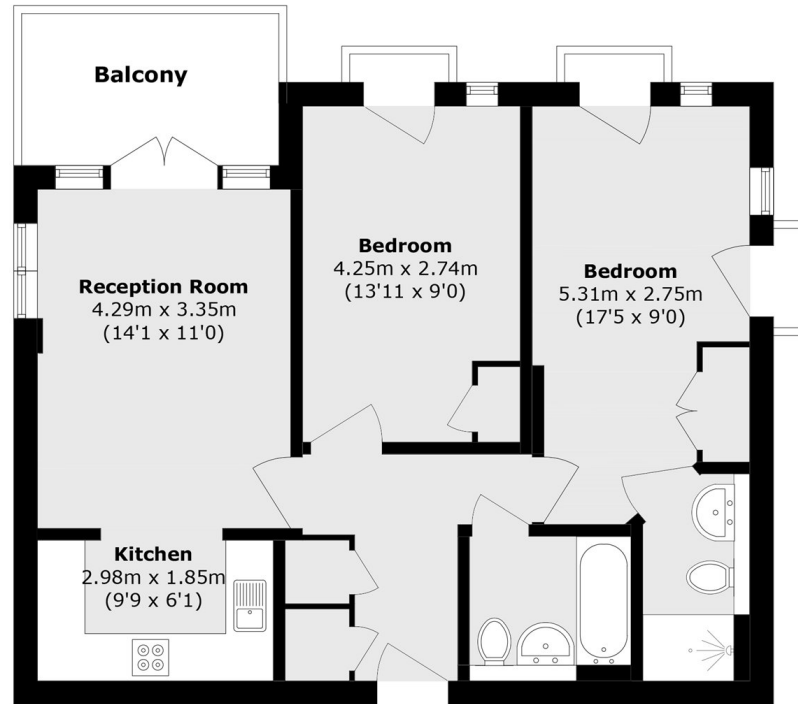
A modern two bedroom, two bathrooms that measures in excess of 662 square feet. This property has floor to ceiling windows, an open plan living area and kitchen with access to the private balcony overlooking Stonebridge Gardens. It is located within a secure development with lift and concierge and is being offered chain free.

City Mill is located adjacent to Stonebridge Park; with Broadway Market and Columbia Road Flower Market close by offering great weekend amenities. Excellent transport links nearby, including Haggerston overground at the end of the road. Also nearby "outstanding" primary schools and Regents Canal.

Features

- Two Double Bedrooms
- Balcony
- Two Bathrooms
- Chain Free
- Open Plan
- Modern
- Secure Development

Lee Street, London, E8



Total area (approx.): 61.9 sq. m (666.2 sq. ft)

Balcony area (approx.): 6.8 sq. m (73.1 sq. ft)