



## Wood Lane, TW7

£219,950

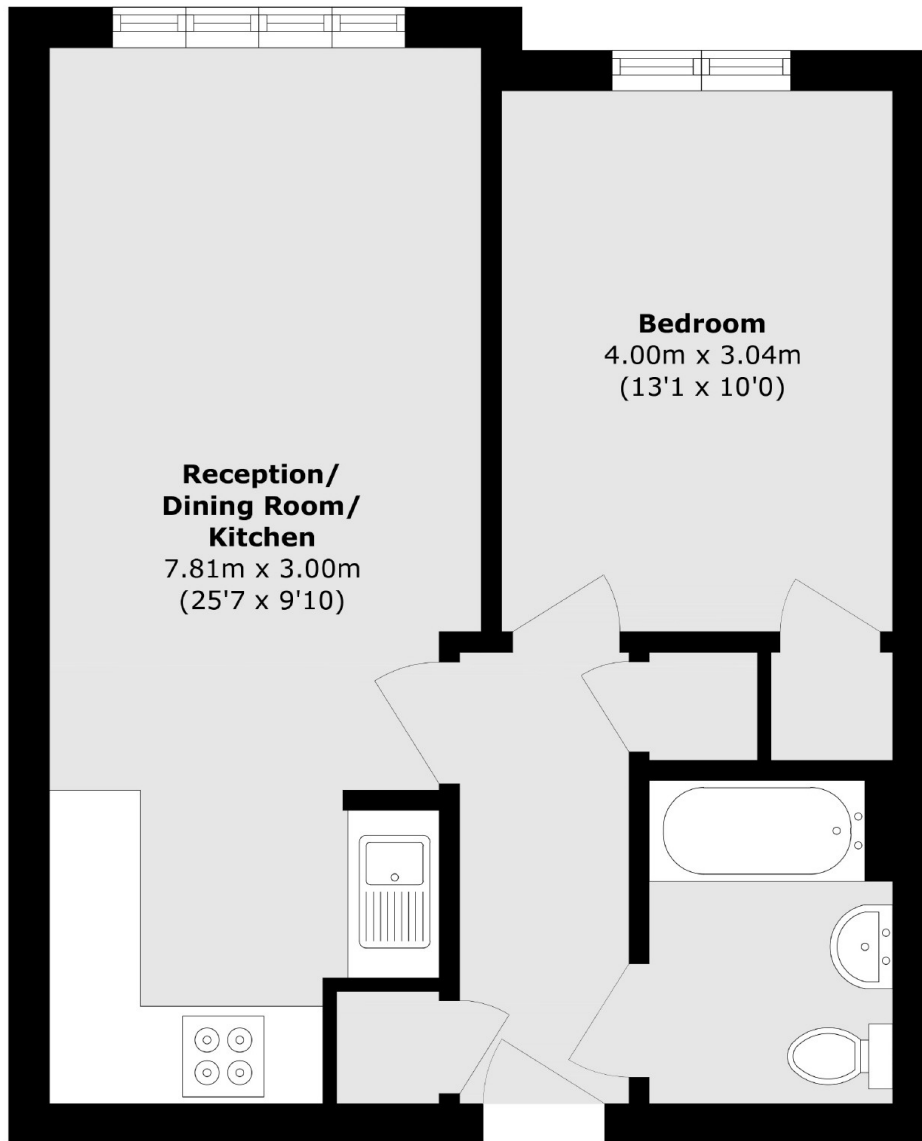
Sold with a newly extended lease is this delightfully spacious one double bedroom top floor apartment located in a popular and sought after gated development. Sold with no onward chain, further benefits include lift access, stunning views, communal gardens and residents parking.

Wood Lane is a sought after and private gated development, with great links to Central London via car, tube and train. Isleworth and Syon Lane Train Stations are a short walk away.

### Features

- Top Floor Apartment
- Newly Extended Lease
- One Double Bedroom
- Lift Access/Third Floor
- Residents Parking
- Communal Gardens
- No Chain

# Wood Lane, Isleworth, TW7



Total area (approx.): 47.6 sq. m (512.3 sq. ft)

**Dexters**

Isleworth  
568 London Road  
Isleworth  
TW7 4EP  
Sales  
020 8560 1177

Energy Rating: C. We aim to make our particulars both accurate and reliable. However they are not guaranteed; nor do they form part of an offer or contract. If you require clarification on any points then please contact us, especially if you're traveling some distance to view. Please note that appliances and heating systems have not been tested and therefore no warranties can be given as to their good working order.

 **RICS** | Regulated  
Estate Agent  
and Letting Agent

[dexters.co.uk](http://dexters.co.uk)