

OVER 60?

Secure this property
for up to **59% less!**



Guide Price

£425,000

Freehold

3x  1x  1x 

Penn Gardens, Ashington, Pulborough,

West Sussex, RH20

cubitt & west
Helping you move forwards



Main features

- Characterful home in a lovely semi rural location
- Lounge with feature log burner
- Well presented bright and airy accommodation
- Secluded rear garden backing onto countryside
- Large driveway plus outbuilding. No onward chain!

Accommodation

GROUND FLOOR

- Porch
- Inner Hall
- Lounge: 15'11 x 13'0 (4.85m x 3.97m)
- Kitchen: 18'1 x 7'10 (5.52m x 2.39m)
- Utility Area: 7'0 x 5'1 (2.14m x 1.55m)
- Conservatory: 17'1 x 12'9 (5.21m x 3.89m)

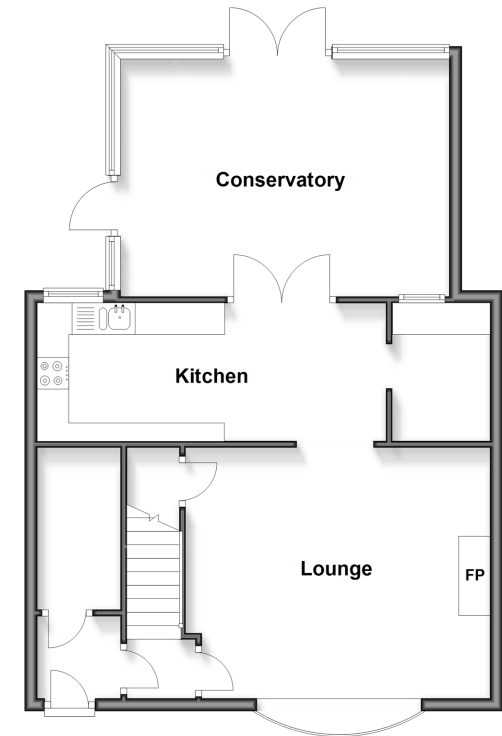
FIRST FLOOR

- Landing
- Family Bathroom
- Bedroom 1: 10'7 x 10'1 (3.23m x 3.08m)
- Bedroom 2: 10'7 into fitted wardrobes x 10'1 (3.23m x 3.08m)
- Bedroom 3: 12'9 into fitted wardrobes x 7'3 (3.89m x 2.21m)

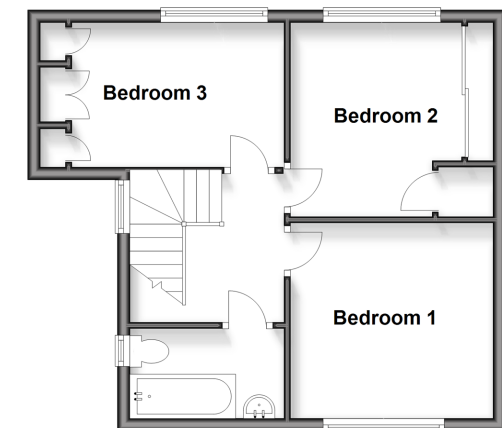
OUTSIDE

- Driveway
- Front Garden
- Rear Garden

Ground Floor
Approx. 704.6 sq. feet



First Floor
Approx. 423.5 sq. feet



Call Ashington - 01903 891444 ■ cubittandwest.co.uk

■ Through a Homewise Home For Life Plan people aged 60+ can secure this property for up to 59% less, by purchasing a Lifetime Lease



23603693/20260323/LI/HM1