



## Key Features

- ◆ One-bedroom, top-floor flat
- ◆ Just off Eastbourne town centre
- ◆ Walking distance from train station, Gildredge Park and seafront
- ◆ Large storage room
- ◆ Free on-street parking
- ◆ EPC rating E



Southfields Road, Eastbourne

£900 PCM



Northwood are delighted to welcome to market this charming one-bedroom, top-floor apartment just off Eastbourne town centre.

Accommodation comprises: living room, kitchen, double bedroom, en-suite bathroom with shower over bath and separate WC.

Further benefits include large storage room, gas central heating, double-glazing and secure entry-phone.

Located in a period semi-detached house just off Eastbourne town centre, on the borders of Old Town and Upperton, this lovely top-floor apartment is only a few minutes walk from the town centre and train station as well as Gildredge Park and the cafés, restaurants and boutique shops of Little Chelsea.







Please view our immersive virtual tour to fully appreciate this fantastic property: <https://tour.giraffe360.com/1157f74884854e01b35075d5acb4a923>

Mobile Phone Coverage and Broadband speeds can be checked on the Ofcom website: <https://checker.ofcom.org.uk/>

Council Tax Band A: £1688

Holding Deposit: £205.00 (equivalent to one week's rent)

Full Deposit: £1035.00 (holding deposit + equivalent of four weeks' rent)

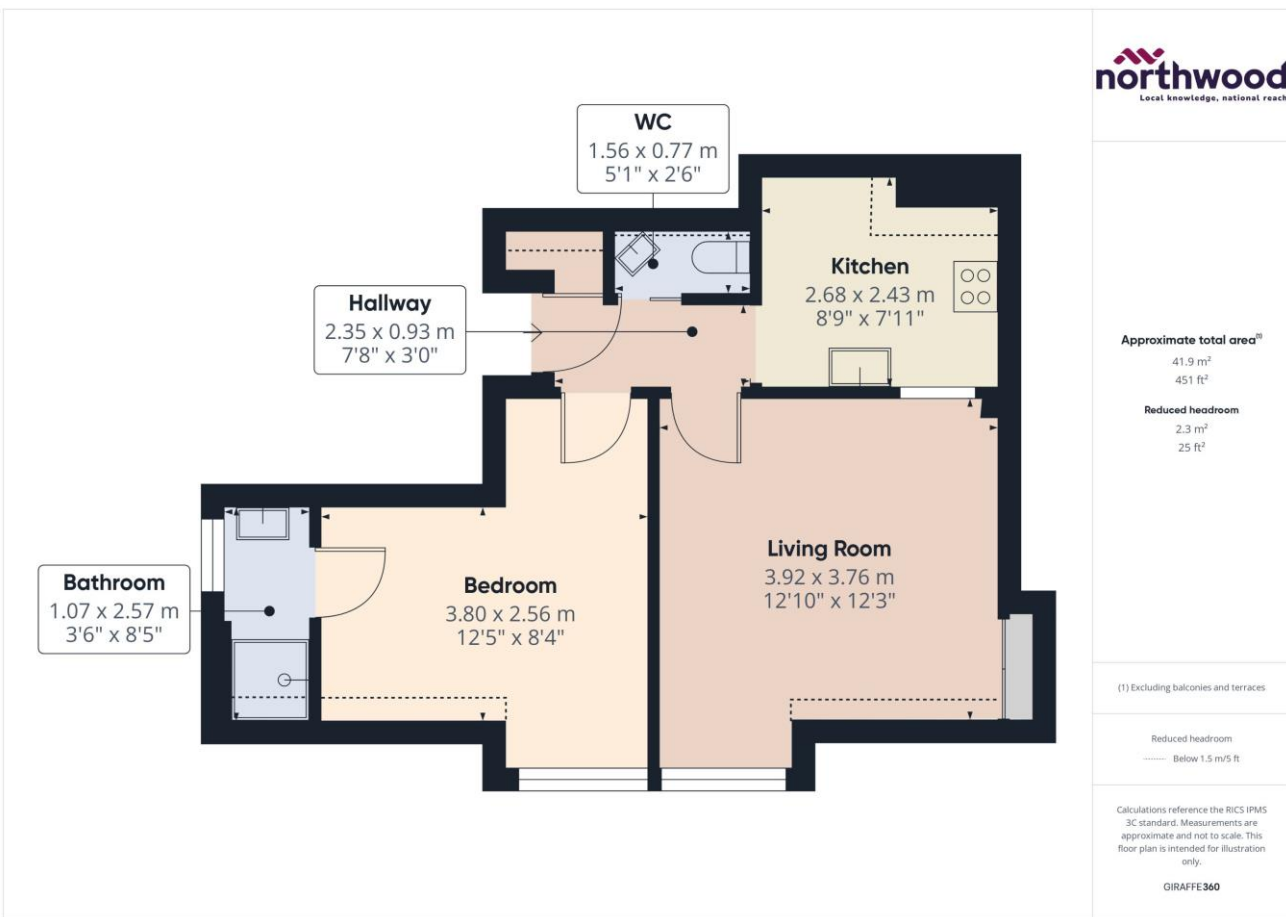
1st month's rent + Full Deposit: £1935.00

Total household income must exceed £27,000.00 to be considered for this property.

This property is managed by directly by the landlord.







SEE MORE ONLINE

## Northwood

81-83 South Street

Eastbourne

BN21 4LR

01323 744544

eastbourne@northwooduk.com