

AVAILABLE



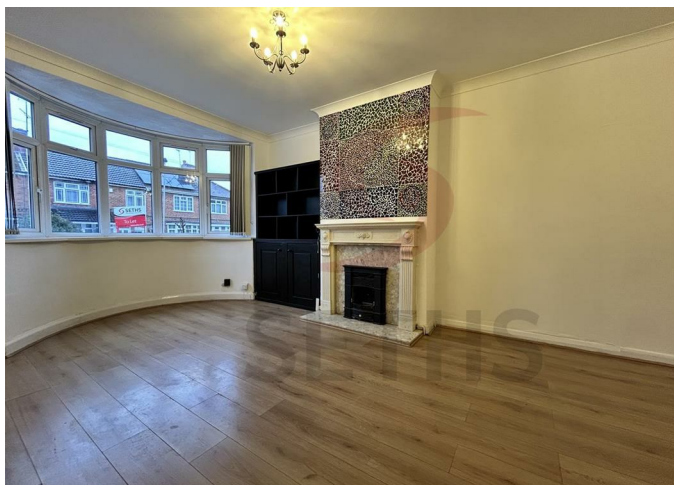
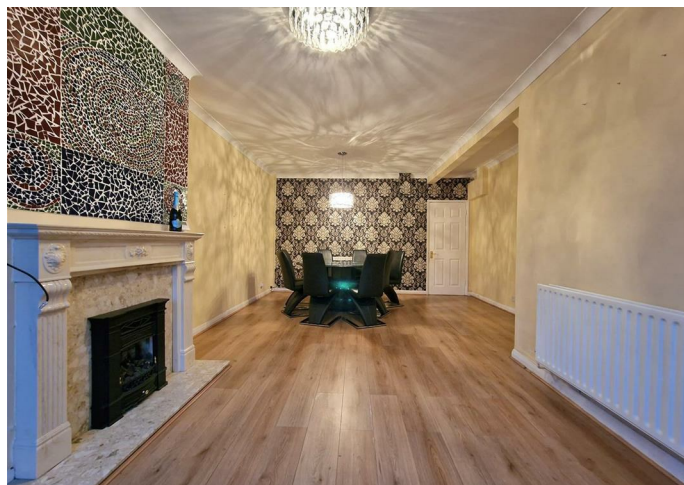
House - End Terrace

# THE GREENWAY LEICESTER LE4 5JW

£1,095 PCM

## FEATURES

- Two Bedroom House
- Lounge/Dining Area
- Downstairs W.C.
- Gas Central Heating
- End Terraced House
- Fitted Kitchen
- Fitted Bathroom
- Double Glazing



 **SETHS**



# 2 Bedroom House - End Terrace located in Leicester

**\*\*No Deposit Option Available\*\***

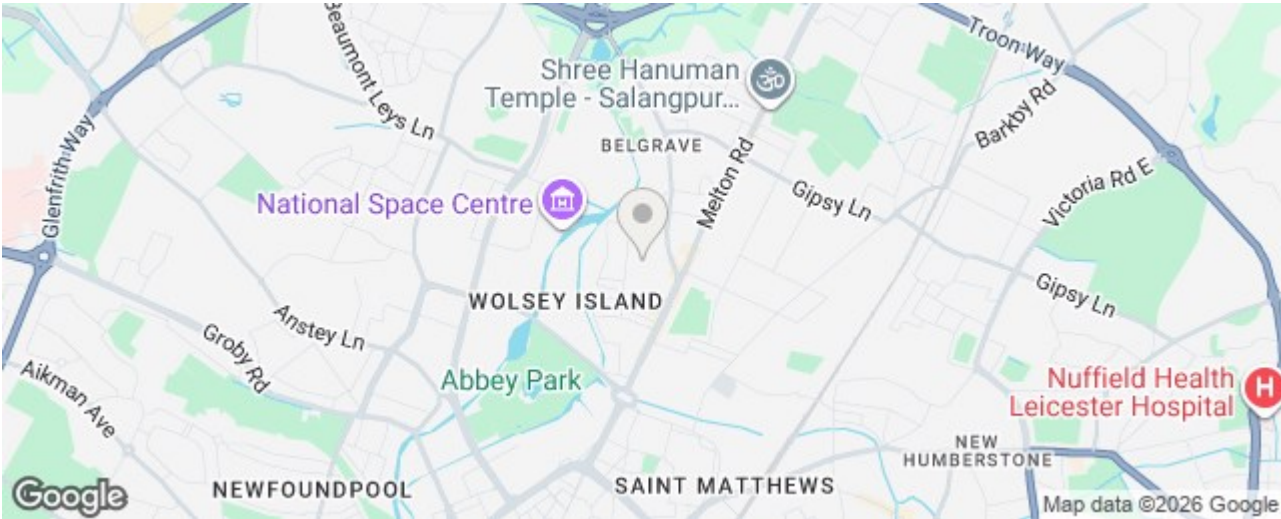
Seths are delighted to present this charming two bedroom end-terraced home, tucked away on The Greenway, a quiet cul-de-sac in the sought-after Belgrave area.

The property welcomes you into a hallway that opens into a spacious lounge and dining area a comfortable space ideal for relaxing or entertaining. The adjoining kitchen is well-appointed with fitted wall and base units, ample worktop space, a breakfast bar, sink, and gas cooker, creating a practical and inviting cooking environment. A convenient downstairs W.C. completes the ground floor.

Upstairs, there are two well-proportioned bedrooms and a fitted bathroom featuring a bath with shower over, wash basin, and W.C. The home further benefits from gas central heating, double glazing throughout, and a private driveway providing off-road parking.

This is a great opportunity to secure a lovely home in a peaceful location, with all the essentials for comfortable modern living.

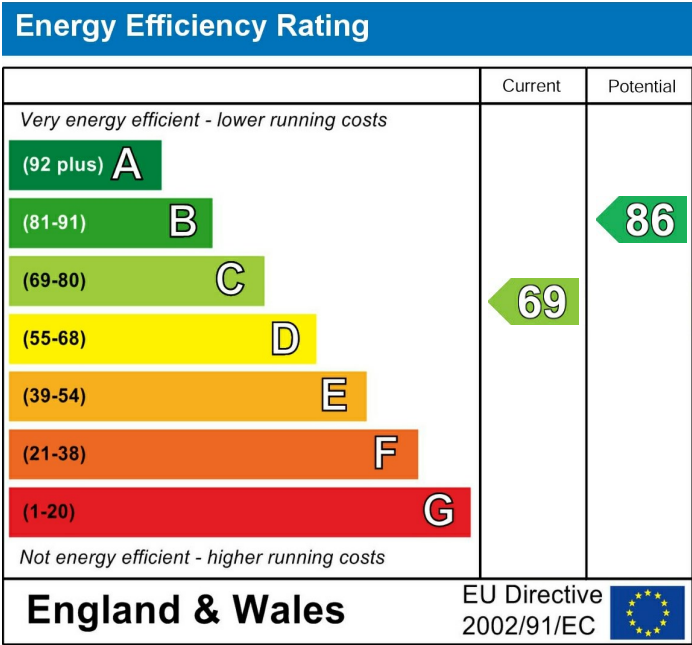
Rent: £1095PCM  
 Security Deposit: £1260  
 Tenancy Length: 6 Months  
 Council Tax Band: A



Call us on  
 0116 266 9977

let@seths.co.uk  
 www.seths.co.uk

Council Tax Band  
 A



Agents Note: Whilst every care has been taken to prepare these particulars, they are for guidance purposes only. All measurements are approximate and are for general guidance purposes only and whilst every care has been taken to ensure their accuracy, they should not be relied upon and potential buyers are advised to recheck the measurements.

