

Manchester Road, Accrington, BB5 2BQ


Offers Over £750,000

WOW! A STUNNING EXTENSIVE PROPERTY FINISHED TO A SUPERB STANDARD

Nuah Heights is a stunning home, finished to perfection with every last detail thought of. Spanning and impressive 6,052sqft, it is the perfect home for a growing family who are looking for a spacious property with a luxury feel. Nestled in the heart of Accrington, this is the perfect location to access well regarded schools yet still conveniently located for accessing the neighbouring towns and has easy access to major commuter links. The property offers versatile interior accommodation with a range of living spaces and eight bedrooms. This property is not one to be missed!

The property comprises briefly, to the ground floor: an impressive and welcoming hallway is open to a stunning kitchen and to the inner hall. The kitchen is fitted with high specification appliances, is open to the first reception room and has a door to the utility. Reception room one provides access to the WC. The utility has doors leading to the rear garden and to the inner hallway which has stairs to the first floor and has doors to the second inner hall, the second reception room and to the rear garden. The second reception room leads to the third reception room and to the cellar. The third reception room is open to the dining area and has doors to the second inner hallway which leads to the fourth reception room and to the storage room.

To the first floor you will find stairs to the second floor and doors to three bedrooms, all with en suites, the main family bathroom and to the further landing. The second landing has access to

Energy Efficiency Rating		Current	Potential
Very energy efficient - lower running costs			
(92 plus)	A		
(81-91)	B		
(69-80)	C		
(55-68)	D	58	
(39-54)	E		
(21-38)	F		
(1-20)	G		
Not energy efficient - higher running costs			
England & Wales		EU Directive 2002/91/EC	

These particulars, whilst believed to be accurate are set out as a general outline only for guidance and do not constitute any part of an offer or contract. Intending purchasers should not rely on them as statements of representation of fact, but must satisfy themselves by inspection or otherwise as to their accuracy. No person in this firm's employment has the authority to make or give any representation or warranty in respect of the property.

Manchester Road, Accrington, BB5 2BQ

Offers Over £750,000

 8  7  3  D

- Exquisite Detached Property
- Sleek Contemporary Finish Throughout
- Ample Off Road Parking
- EPC Rating: TBC

- Eight Bedrooms
- Modern Bathrooms & En Suites
- Tenure Freehold

- Set Over Four Floors
- Low Maintenance Garden With Seating Area
- Council Tax Band G

Ground Floor Entrance Hallway

27'3" x 23'3" (8.31m x 7.11m)

Composite front entrance door, skylight, two UPVC double glazed windows, alarm system, spotlights, mood lighting, smoke alarm, tiled flooring with underfloor heating, open to kitchen and the inner hall.

Kitchen

27'1" x 14'7" (8.26m x 4.45m)

UPVC double glazed window, range of high gloss wall and base units with quartz surfaces, centre island and breakfast bar, stainless steel sink with mixer tap, Samsung double oven in a high rise unit, six ring gas hob, extractor hood, two wine fridges, plumbing for dishwasher, space for fridge freezer, under unit lighting, television point, spotlights, smoke alarm, tiled flooring with underfloor heating, door to utility and open to reception room one.

Reception Room One

20'9" x 14'0" (6.35m x 4.27m)

Two UPVC double glazed windows, two central heating radiators, electric fire, television point, spotlights, mood lighting, tiled flooring and doors to storage cupboard and WC.

WC

9'10" x 4'11" (3.02m x 1.50m)

UPVC double glazed window, vanity top wash basin, dual flush WC, illuminated mirror, central heating radiator, tiled elevations, spotlights, extractor fan and tiled flooring with underfloor heating.

Utility

25'11" x 9'10" (7.92m x 3.02m)

UPVC double glazed window, central heating radiator, plumbing for washing machine, space for dryer, spotlights, tiled flooring, doors to boiler room and storage cupboard and double doors to the inner hall.

Inner Hall

21'5" x 20'6" (6.55m x 6.27m)

Central heating radiator, Hive system, spotlights, mood lighting, tiled flooring with underfloor heating, stairs to the first floor, doors to the second inner hall and reception room two and composite double glazed door to the rear.

Reception Room Two

25'11" x 12'0" (7.92m x 3.68m)

UPVC double glazed window, central heating radiator, television point, Versace wallpaper, tiled flooring with underfloor heating, door down to the cellar, double doors to

reception room three and UPVC double glazed French doors to the rear.

Reception Room Three

28'2" x 13'10" (8.59m x 4.24m)

UPVC double glazed bay window, central heating radiator, electric fire, television point, smoke alarm, spotlights, part tiled flooring with underfloor heating and door to the second inner hall.

Inner Hall Two

22'0" x 3'1" (6.73m x 0.94m)

Central heating radiator, spotlights, smoke alarm, tiled flooring and doors to reception room four and storage cupboard.

Reception Room Four

15'5" x 13'8" (4.70m x 4.17m)

Two UPVC double glazed windows, central heating radiator, television point and spotlights.

Store Room

11'10" x 3'4" (3.63m x 1.02m)

UPVC double glazed window, fuse box, CCTV monitor, alarm system and tiled flooring.

First Floor Landing

22'2" x 14'4" (6.78m x 4.37m)

Central heating radiator, stairs to the second floor and doors to three bedrooms, bathroom and further landing.

Bedroom Two

18'0" x 15'5" (5.49m x 4.70m)

Two UPVC double glazed windows, central heating radiator, fitted wardrobes, spotlights and doors to the en suite and dressing room.

En Suite 11'10 x 9'9

UPVC double glazed window, central heating towel rail, dual flush WC, vanity top wash basin, double direct feed shower unit with jets, freestanding bath, illuminated mirror, tiled elevations, spotlights and tiled flooring with underfloor heating.

Dressing Room 8'9 x 3'7

Fitted wardrobes, television point and spotlights.

Bedroom Three

13'5" x 12'7" (4.09m x 3.84m)

UPVC double glazed window, central heating radiator, television point, spotlights and door to the en suite.

En Suite 6'3 x 4'2

Central heating towel rail, dual flush WC, vanity top wash basin, double direct feed shower unit, tiled elevations, spotlights, extractor fan and tiled flooring.

Bedroom Four/Dressing Room

14'2" x 12'2" (4.34m x 3.71m)

UPVC double glazed window, central heating radiator, spotlights and door to the en suite.

En Suite 9'3 x 2'11

Central heating towel rail, dual flush WC, vanity top wash basin, direct feed shower unit, tiled elevations, spotlights, extractor fan and tiled flooring.

Bathroom

14'0" x 10'11" (4.29m x 3.35m)

UPVC double glazed window, central heating radiator, two central heating towel rails, two vanity top wash basins, double direct feed shower with jets, corner enclosed bath with jets, Bluetooth and built in speakers, dual flush WC with rinse head, bidet, illuminated mirror, tiled elevations, spotlights and tiled flooring with underfloor heating.

Further Landing

23'3" x 15'8" (7.09m x 4.78m)

Eight UPVC double glazed windows, central heating radiator, sensor lighting, smoke alarm and doors to three bedrooms and storage cupboard.

Bedroom Eight/Office

7'1" x 6'5" (2.18m x 1.96m)

UPVC double glazed window, central heating radiator and spotlights.

Bedroom Seven

13'3" x 9'6" (4.04m x 2.90m)

Two UPVC double glazed windows, central heating radiator, spotlights and door to the en suite.

En Suite 4'8 x 4'3

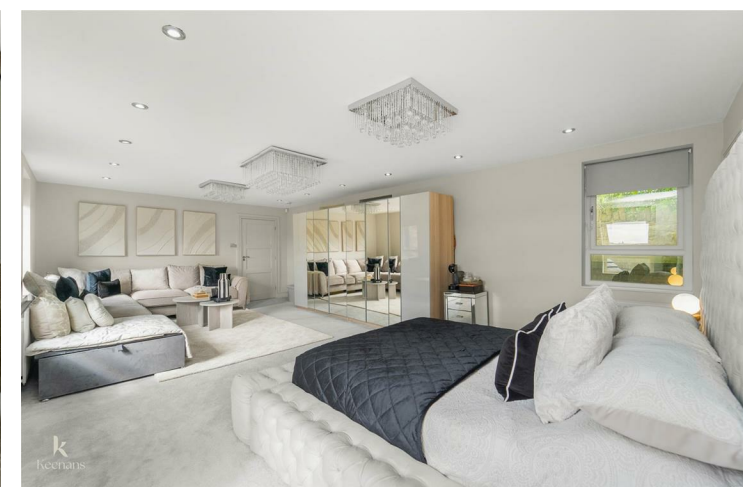
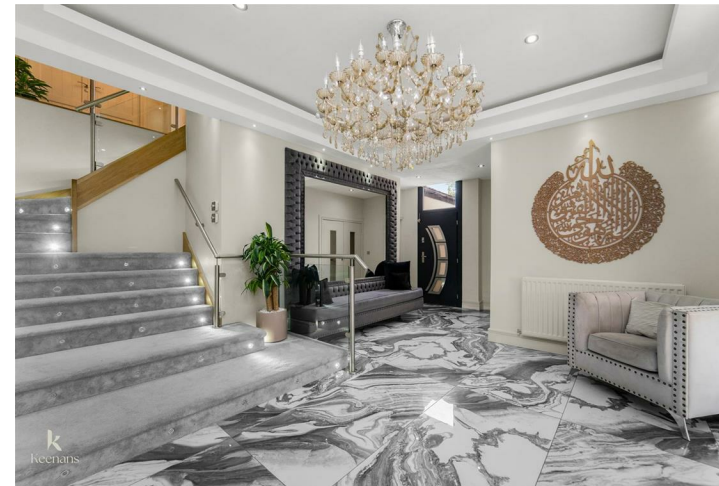
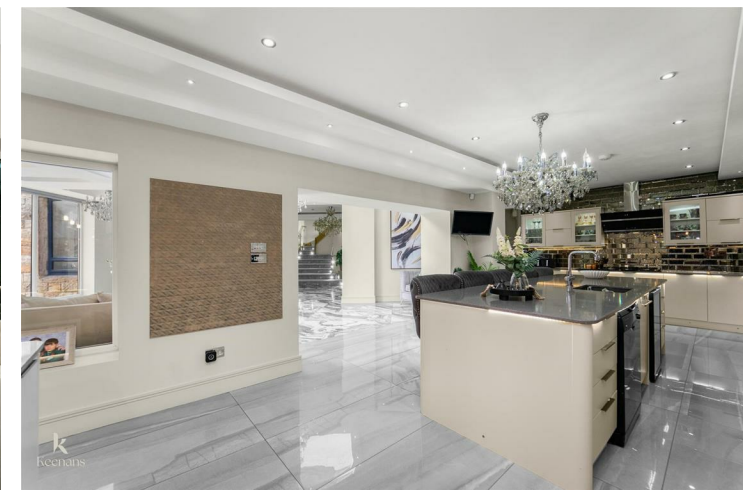
Bedroom One

25'1" x 14'0" (7.65m x 4.27m)

Six UPVC double glazed windows, two central heating radiators, television point, spotlights, fire door to the front elevation and door to the en suite.

En Suite 9'11 x 8'8

UPVC double glazed window, central heating towel rail, dual flush WC, vanity top wash basin, illuminated mirror, tiled elevations, spotlights, extractor fan and tiled flooring.



Tel: 01254389384

www.keenans-estateagents.co.uk