



Amyand Park Road, TW1

£1,200,000

A beautifully presented, four bedroom period property located in the heart of St Margarets village. With ample period features throughout and having been modernised, this property is not to be missed out on.

Located in St Margarets village within 0.4 miles from Twickenham Train Station. St Margarets village with its boutique shops, cafés, train station, Moor Mead Park and Marble Hill Park are only 0.3 miles away.

Features

- Victorian Property
- Four Bedrooms
- Fantastic Location
- Two Bathrooms
- High Ceilings
- Beautifully Presented



Amyand Park Road, TW1

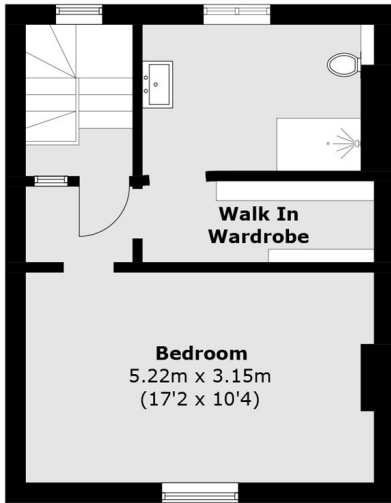
As you enter, the house offers a large and welcoming double reception space, providing excellent separation for both dining and living areas. There is also access to a lower ground floor reception room, ideal as a cosy lounge, media room or additional entertaining space. The property boasts attractive high ceilings throughout, enhancing the sense of space and light.

To the rear, there is a modern kitchen, thoughtfully designed to provide a functional and stylish layout. The first floor offers three well proportioned bedrooms, a family bathroom and a separate WC.

Occupying the top floor is an impressive principal suite, featuring a spacious master bedroom complete with a private en suite bathroom and a walk in wardrobe, creating a luxurious and private retreat.

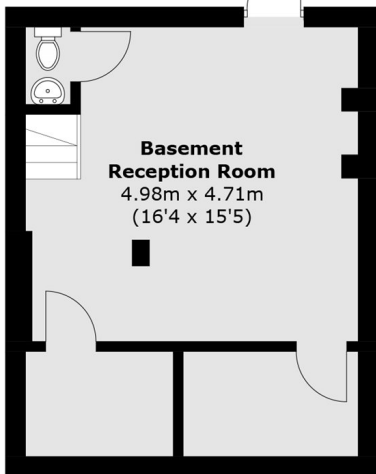


Amyand Park Road, St Margarets, TW1

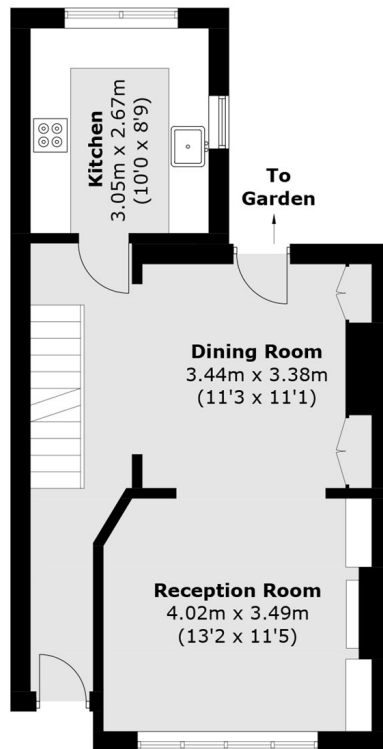


Second Floor

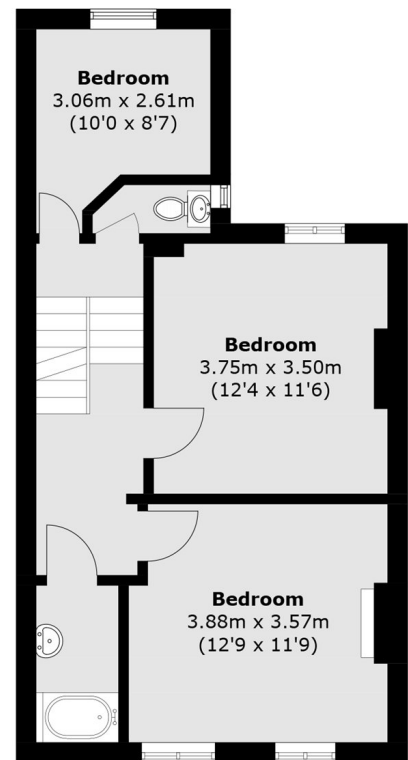
To Garden



Basement



Ground Floor



First Floor

Total area (approx.): 160.4 sq. m (1,726.4 sq. ft)
(Including Basement)