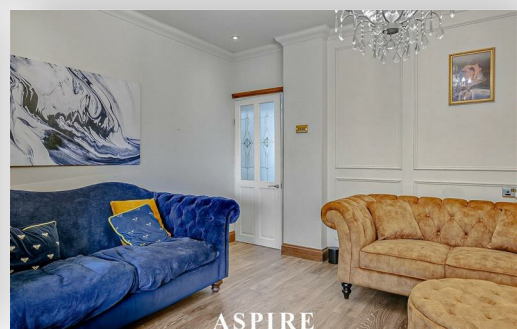


To arrange a viewing contact us
today on 01268 777400



Station Crescent, Rayleigh, Essex, Offers over £465,000

Spacious 4-Bedroom Semi-Detached Home – Station Crescent, Rayleigh

Situated on Station Crescent in Rayleigh, this spacious and well-maintained four-bedroom semi-detached home offers ideal accommodation for modern family living, set within easy reach of excellent schools, local amenities, and Rayleigh Station.

The ground floor comprises a generous lounge, a dedicated study or home office, a modern shower room, and a stunning open-plan kitchen/family room. Upstairs, there are four good-sized bedrooms and a stylish family bathroom.

Externally, the property benefits from a private driveway providing off-street parking, a detached garage, and a well-maintained rear garden offering a private outdoor space to relax.

www.aspireestateagents.co.uk

Hallway

Kitchen Family Room

21'00 x 11'00 (6.40m x 3.35m)

Lounge

21'05 x 15'00 (6.53m x 4.57m)

Study

9'00 x 5'11 (2.74m x 1.80m)

Shower Room

Landing

Master Bedroom

20'00 x 9'00 (6.10m x 2.74m)

Bedroom Two

10'00 x 9'00 (3.05m x 2.74m)

Bedroom Three

10'00 x 9'00 (3.05m x 2.74m)

Bedroom Four

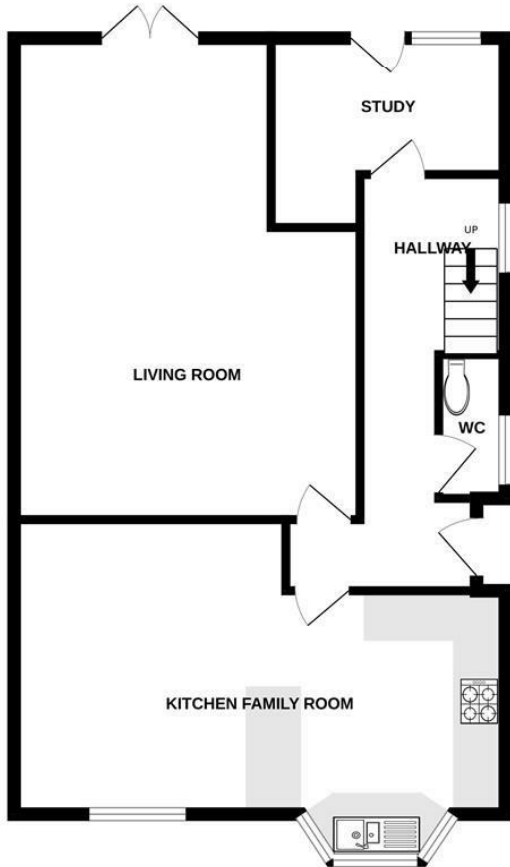
8'00 x 8'00 (2.44m x 2.44m)

Bathroom

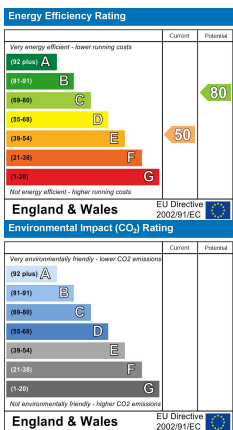
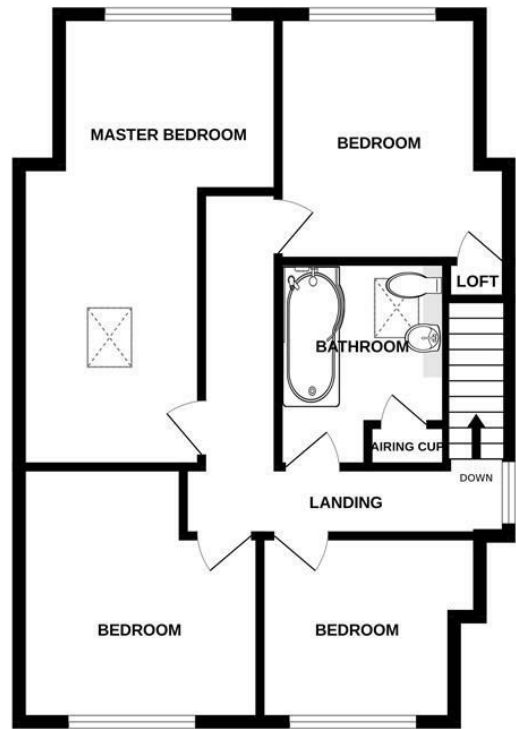
Garage

Rear Garden

GROUND FLOOR



1ST FLOOR



Under the Property Misdescriptions Act 1991 we make every effort to ensure our sales details are accurate but they are a general outline and do not constitute any part of an offer or contract. Any services, equipment and fittings have not been tested and no warranty can be given as to their condition. We strongly recommend that all the information provided be verified by your advisors and in particular, measurements required for a specific purpose such as fitted furniture or carpets. Please tell us if you have any problems and members of our branches will help either over the phone or in person. A copy of our complaints procedure is available on request. The details are issued on the strict understanding that any negotiations in respect of the property named herein are conducted through Aspire Estate Agents.