

OVER 60?

Secure this property
for up to **59% less!**



Guide Price

£575,000

Freehold

3x  2x  1x 

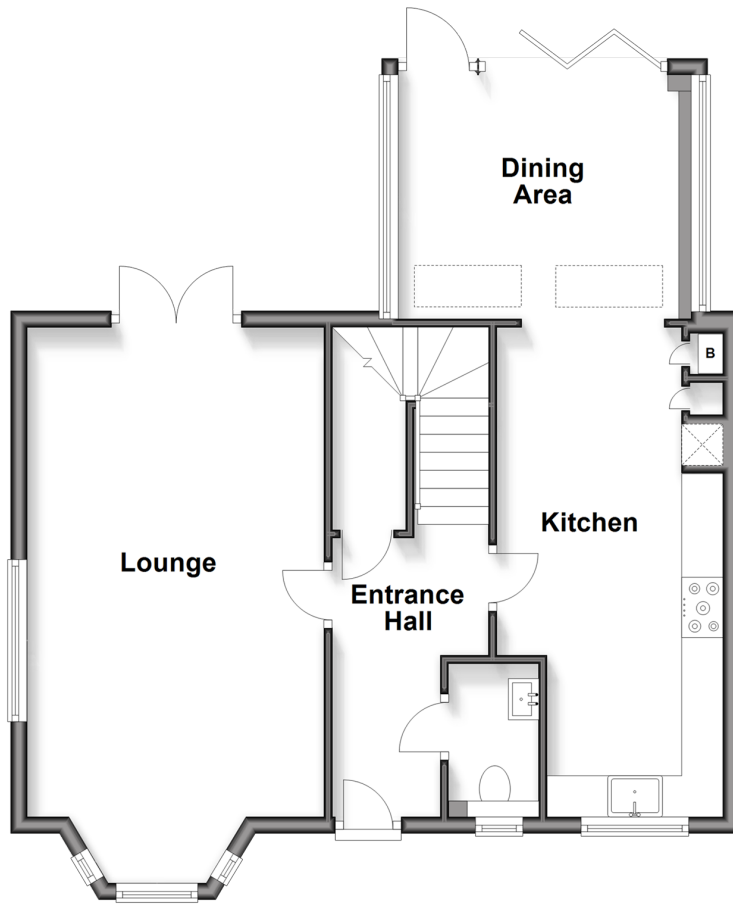
Three Fields Road, Tenterden, Kent, TN30

Wards

Helping you move forwards

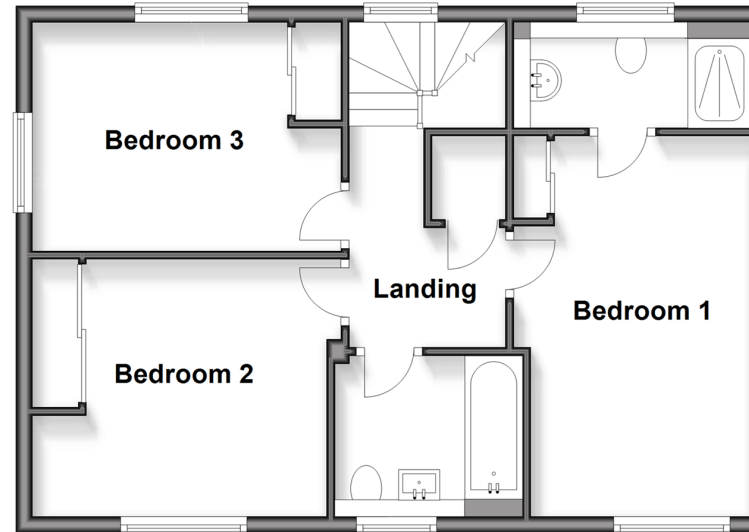
Ground Floor

Approx. 62.4 sq. metres (671.3 sq. feet)



First Floor

Approx. 51.9 sq. metres (558.3 sq. feet)



Outbuilding

Approx. 16.1 sq. metres (173.6 sq. feet)



Accommodation

GROUND FLOOR

Entrance Hallway

Cloakroom

Lounge: 22'0 x 11'9 (6.71m x 3.58m)

Kitchen: 19'3 x 9'10 (5.87m x 3.00m)

Dining Area: 11'10 x 9'2 (3.61m x 2.80m)

FIRST FLOOR

Landing

Bedroom 1: 15'9 x 9'8 (4.80m x 2.95m)

En-Suite Shower Room

Bedroom 3: 12'8 x 8'2 (3.86m x 2.49m)

Bedroom 2: 11'9 x 11'4 (3.58m x 3.46m)

Family Bathroom

OUT BUILDING

Home Office: 19'10 x 9'1 (6.05m x 2.77m)

OUTSIDE

Front and Rear Garden

Off Road Parking



Main features

- Beautifully presented family house close to town centre
- Rural views to front
- Home office/family room to rear
- Extended to rear to create dining area
- 19.3" kitchen



Nearest Schools

Primary Schools: Tenterden C of E Junior School 0.2 miles, St Michael's C of E Primary (Tenterden) 1.5 miles, Rolvenden Primary 2.6 miles, Secondary & Further Education Schools: Homewood School and Sixth Form Centre 0.9 miles, Benenden School 5.0 miles, Frewen



Transport Information

Train Stations: Appledore 5.8 miles, Pluckley 7.0 miles, Ham Street 7.2 miles



Address

Three Fields Road, Tenterden, Kent, TN30



Directions

For directions to this property please contact us.



Wards
Helping you move forwards

Call Tenterden Branch 01580 766002 ■ wardsof Kent.co.uk



■ Through a Homewise Home For Life Plan people aged 60+ can secure this property for up to 59% less, by purchasing a Lifetime Lease



14008085/20260408/SRH/SRH