

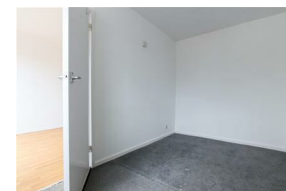


Alexander Hudson Estates

Sales Particulars

Alexander Hudson Estates

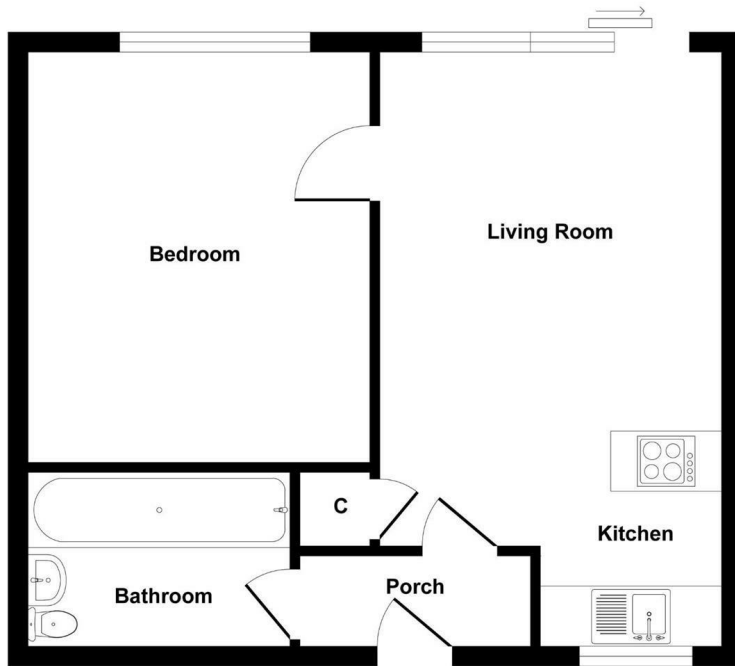
Belsay Gardens, Red House Farm, NE3



The Property

Alexander Hudson Estates introduces to the market this first-floor, one bedroom apartment with balcony in the popular area of Red House Farm, Fawdon. Close to local shops, amenities and transport routes, conveniently located and within easy reach of Newcastle City Centre, Gosforth High Street and Kingston Park.

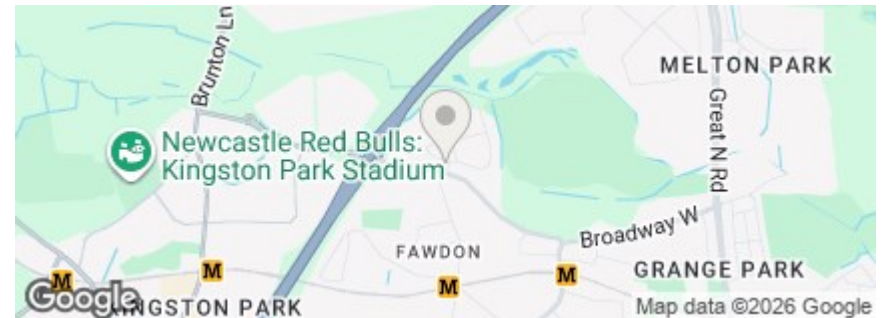
The property offers a watertight single garage and is available immediately on an unfurnished basis.



Floor Plan

Produced by Elements Property

Council Tax: A
EPC Rating: 68





Alexander Hudson Estates
The Printworks
20 Arrow Close
NE12 6QN

0191 268 7433
sales@alexanderhudson.co.uk