



Meadow Drive, Par, Cornwall    **£197,500**





YOUR MOVE





## Meadow Drive, Par, Cornwall

**£197,500**

### Property Description

A well presented semi detached house on the popular Meadow Drive development in Par with sea views. The accommodation to the ground floor comprises of hallway, lounge with open arch to a kitchen/ dining room which has patio doors leading to the garden. Whilst to the 1st floor there are 3 bedrooms, and a family bathroom . To the front there is a large parking area for several cars, whilst the rear garden has a patio suitable for alfresco dining and a lawned area. The property benefits from double glazing and gas central heating through out. EPC grade C.

### Our View

This is an ideal family property set in a good location with sea views. The property is suitable for those with a family or buy to let investor.

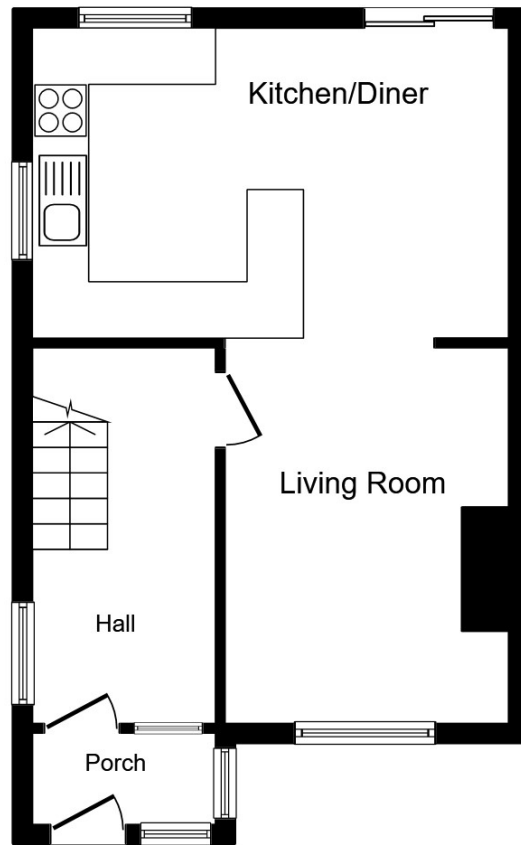
### Location

Meadow Drive is a popular development in the Par area, which offers Junior school, an assortment of local shops, doctors surgery, railway station and local beaches. The Town of St Austell is approximately 4 miles away and offers a full array of shopping and social activities along with a main line Railway and Bus Station.

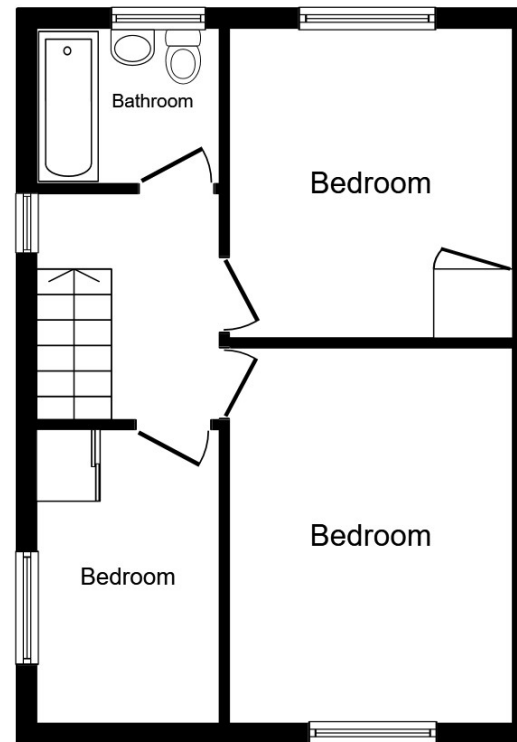


**EPC Grade C**

**For full EPC please contact the branch**



**Ground Floor**



**First Floor**

This floor plan is for illustrative purposes only. It is not drawn to scale. Any measurements, floor areas (including any total floor area), openings and orientation are approximate. No details are guaranteed, they cannot be relied upon for any purpose and they do not form part of any agreement. No liability is taken for any error, omission or misstatement. A party must rely upon its own inspection(s).  
Plan produced for Your Move. Powered by [www.focalagent.com](http://www.focalagent.com)

IMPORTANT NOTE TO PURCHASERS: We endeavour to make our sales particulars accurate and reliable, however, they do not constitute or form part of an offer or any contract and none is to be relied upon as statements of representation or fact. The services, systems and appliances listed in this specification have not been tested by us and no guarantee as to their operating ability or efficiency is given. All measurements have been taken as guide to prospective buyers only, and are not precise. Floor plans where included are not to scale and accuracy is not guaranteed. If you require clarification or further information on any points, please contact us, especially if you are travelling some distance to view. Fixtures and fittings other than those mentioned are to be agreed with the seller.

The Your Move branch is operated by National Home Move Limited which is independently owned and operated under a licence from [your-move.co.uk](http://your-move.co.uk) Limited. National Home Move Limited is registered in England and Wales with company number 11805074, registered office: 5 Brooklands Place, Brookland Road, Sale, United Kingdom, M33 3SD. VAT Reg No: 315255523.

Victoria Place, St. Austell, Cornwall, PL25 5PE

01726 68192 \* [Staustell@your-move.co.uk](mailto:Staustell@your-move.co.uk)

\*Calls may be recorded and/or monitored for training and/or security purposes.



**YOUR MOVE**