



St. John's Estate, N1

£500,000

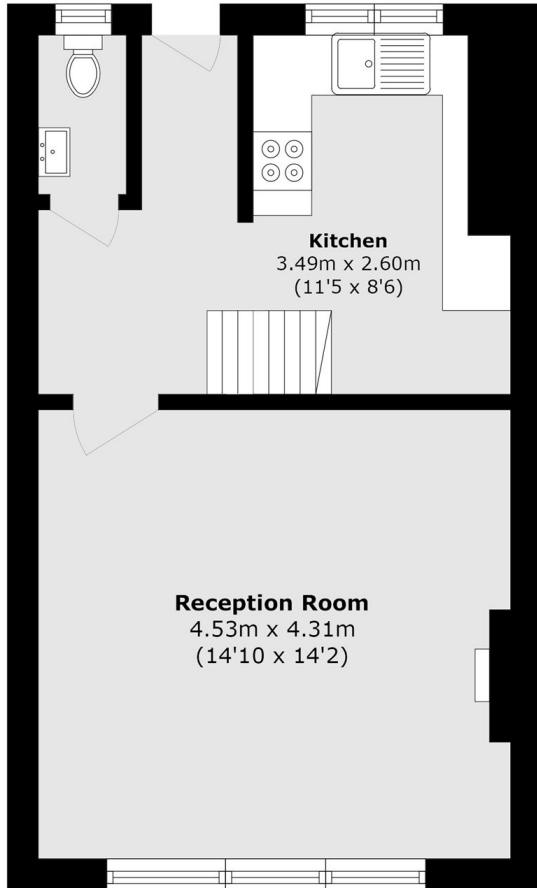
A three bedroom, split level apartment located near Hoxton. The lower level of this flat offers a spacious reception space, with large windows for plenty of natural light, a separate kitchen and a WC. The upper level consists of three good sized bedrooms with plenty of space for storage and a family bathroom.

Located equidistant to Hoxton station (Windrush line) and Old Street station (Northern line), this property offers a convenient commute to all corners of the city. The local area provides a number of shops, bars and cultural spots such as museums, theatres and galleries, as well as multiple schools.

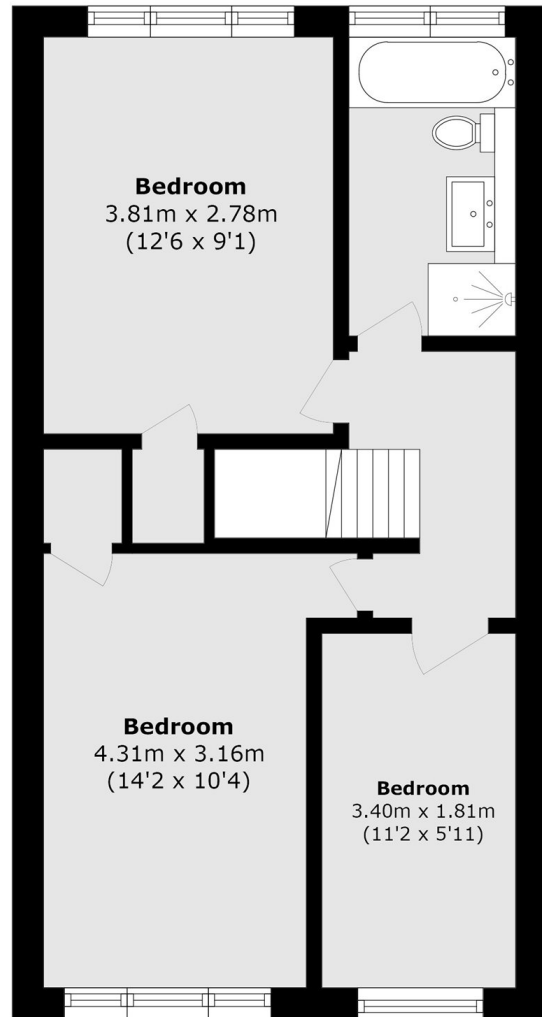
Features

- Three Bedrooms
- Split Level
- Secure Entry
- Dual Aspect
- Residents Garden
- West Facing

St. John's Estate,
London, N1



Second Floor



Third Floor

Total area (approx.): 77.1 sq. m (829.9 sq. ft)