



Price
£450,000

Freehold

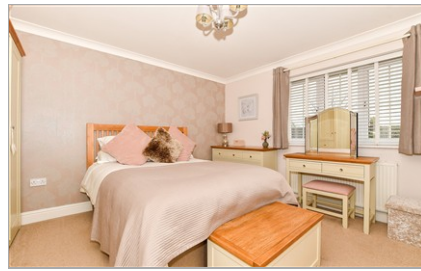
3x  2x  1x 

**Pippins Close,
Tonbridge, Kent, TN10**

OVER 60?

Secure this property
for up to **59% less!**

Wards
Helping you move forwards



Main features

- Off-street parking for two cars
- Cu-de-sac location
- Great for first time buyers
- Situated close to local amenities on Tonbridge High Street
- Well-presented throughout

Accommodation

GROUND FLOOR

Hallway
 Cloakroom
 Lounge: 15'1 x 14'0 (4.60m x 4.27m)
 Kitchen: 14'0 x 7'0 (4.27m x 2.14m)

FIRST FLOOR

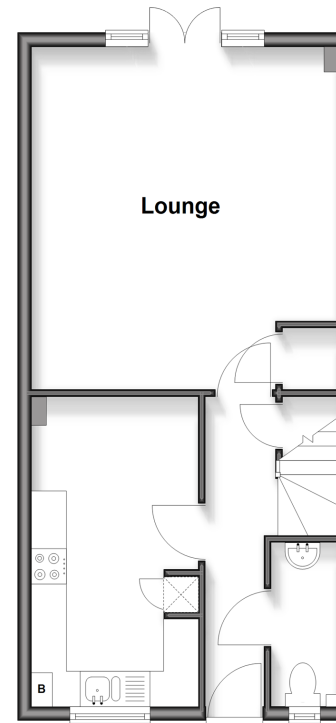
Landing
 Bedroom 1: 12'0 x 10'10 (3.66m x 3.30m)
 En-Suite Shower Room: 7'0 x 3'0 (2.14m x 0.92m)
 Family Bathroom: 7'0 x 5'0 (2.14m x 1.53m)
 Bedroom 2: 11'0 x 7'0 (3.36m x 2.14m)
 Bedroom 3: 7'0 x 6'0 (2.14m x 1.83m)

OUTSIDE

Rear Garden
 Off-Road Parking

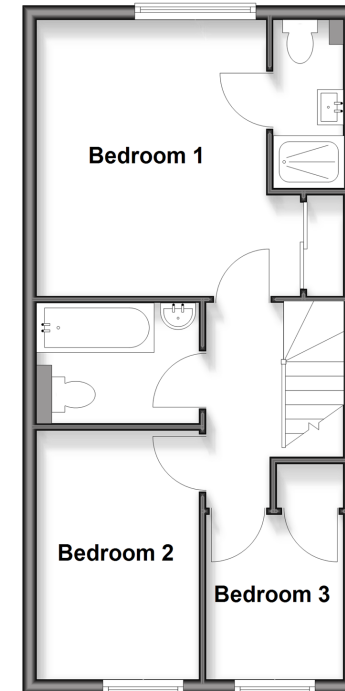
Ground Floor

Approx. 41.0 sq. metres (440.9 sq. feet)



First Floor

Approx. 40.9 sq. metres (440.2 sq. feet)



Call Tonbridge - 01732 770755 ■ wardsofkent.co.uk

■ Legal advice should be taken to verify fixtures/fittings, planning, alterations and/or lease details
 ■ Through a Homewise Home For Life Plan people aged 60+ can secure this property for up to 59% less, by purchasing a Lifetime Lease

■ Appliances & services are untested, dimensions are approximate and floor plans are not to scale



14134493/20260205/MB/AJF