



Neckinger Estate, SE16

£400,000

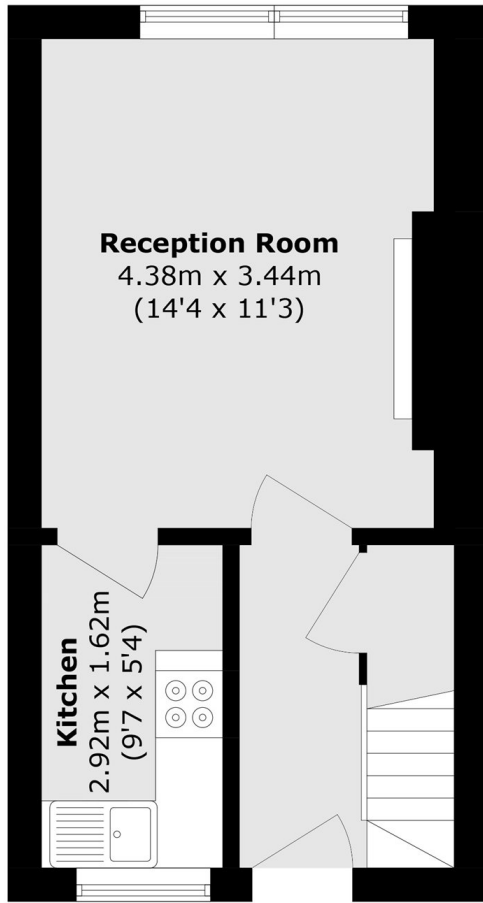
Situated in a quiet development and arranged over two floors, this two double bedroom flat is in excellent condition and has a large living space, separate kitchen, modern bathroom, ample storage and permit parking.

Neckinger Estate is only 0.4 miles from Bermondsey tube station and is surrounded by artisan delis, shops, cafés, food markets and restaurants.

Features

- Two Double Bedrooms
- Split Level
- Fantastic Condition
- Excellent Location
- Permit Parking
- Long Lease

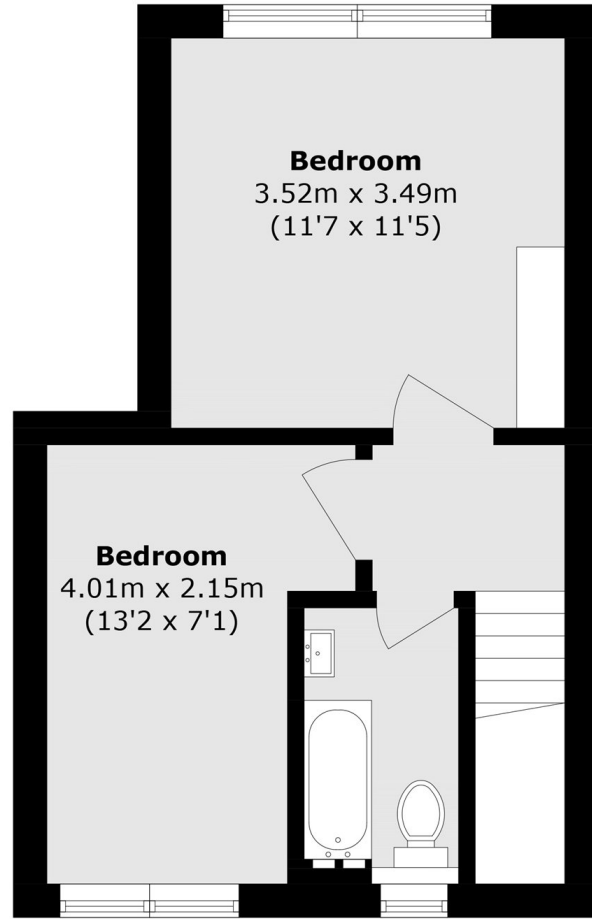
Neckinger Estate, London, SE16



Reception Room
4.38m x 3.44m
(14'4 x 11'3)

Kitchen
2.92m x 1.62m
(9'7 x 5'4)

First Floor



Bedroom
3.52m x 3.49m
(11'7 x 11'5)

Bedroom
4.01m x 2.15m
(13'2 x 7'1)

Second Floor

Total area (approx.): 58.3 sq. m (627.5 sq. ft)