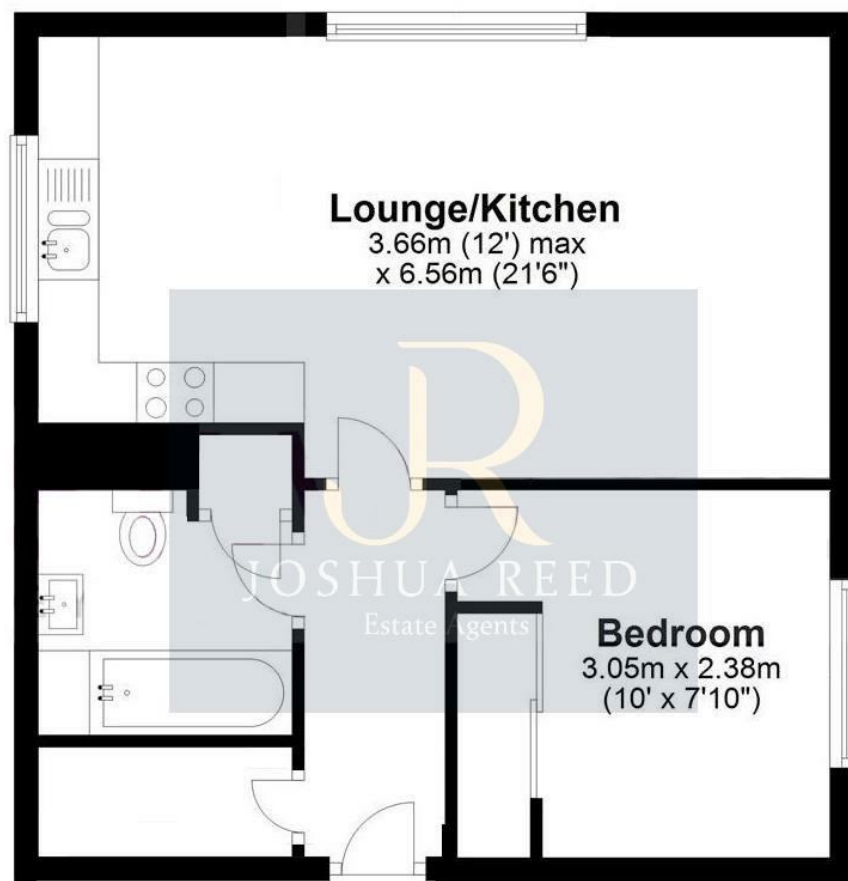




1 Bed Apartment
located in

JR
JOSHUA REED
Estate Agents

243B Lampits
Hoddesdon
EN11 8EA



Whilst every attempt has been made to ensure the accuracy of the floor plan contained here, measurements of doors, windows, rooms and any other items are approximate and no responsibility is taken for any error, omission, or mis-statement. This plan is for illustrative purposes only and should be used as such by any prospective purchaser. The services, systems and appliances shown have not been tested and no guarantee as to their operability or efficiency can be given.

£235,000

CONTACT

23-27 Maidenhead Street
Hertford
Hertfordshire
SG14 1DW

EMAIL

josh@joshua-reed.co.uk

TELEPHONE

01992 917388

www.joshua-reed.co.uk

SUMMARY

A stunning one bedroom top floor penthouse apartment forming part of the ever popular 'Skyview Apartments' built in 2018/19. This high spec property is beautifully presented and features a spacious open plan lounge/diner/modern kitchen with fully integrated appliances, direct views over countryside and river, underfloor heating, fitted wardrobes to bedroom, luxury bathroom, plenty of storage, long lease, low service charges and residents parking.

The property is nicely situated within walking distance of Hoddesdon Town Centre and Broxbourne Train Station servicing Tottenham Hale & London Liverpool Street. A perfect first time buy.

A viewing is highly recommended of this contemporary 'Ex-Show Flat' apartment.

DIRECTIONS

