



Peterborough Road, SW6

£475,000

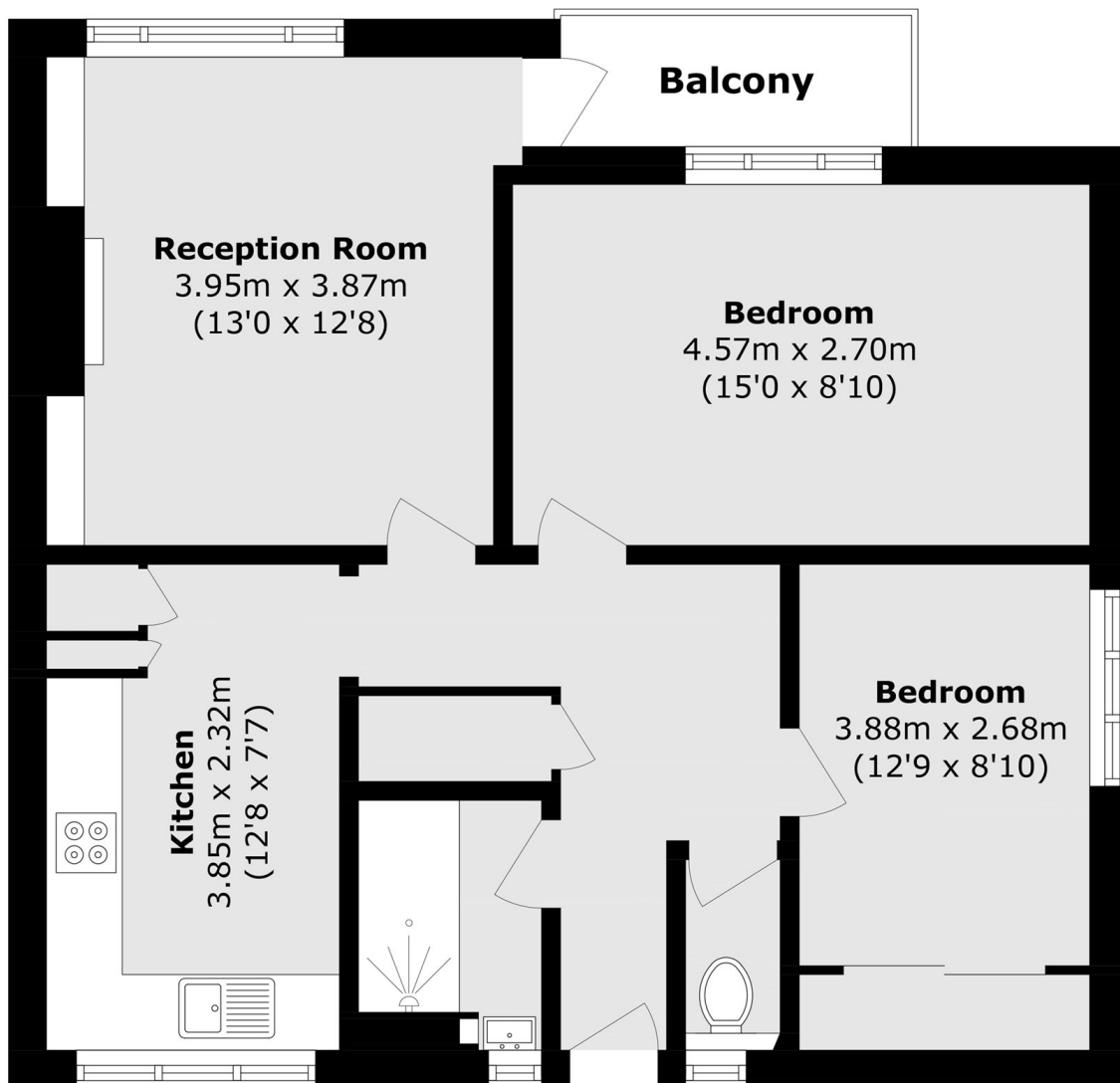
A beautifully-presented two bedroom purpose-built flat located moments from Parsons Green. This property features a newly renovated eat-in kitchen, a spacious reception room with access to a private balcony and a stylish family bathroom.

Ideally situated between Hurlingham Park and South Park, the property is moments from the amenities and transport links of Parsons Green as well as prestigious local schools.

Features

- Two Double Bedrooms
- Newly Renovated
- Close to Transport Links
- Separate Kitchen
- Private Balcony
- Parsons Green

Peterborough Road, London, SW6



Second Floor

Total area (approx.): 60.7 sq. m (653.3 sq. ft)

Balcony Total (approx.): 2.8 sq. m (30.1 sq. ft)