



**MEAD**PROPERTY



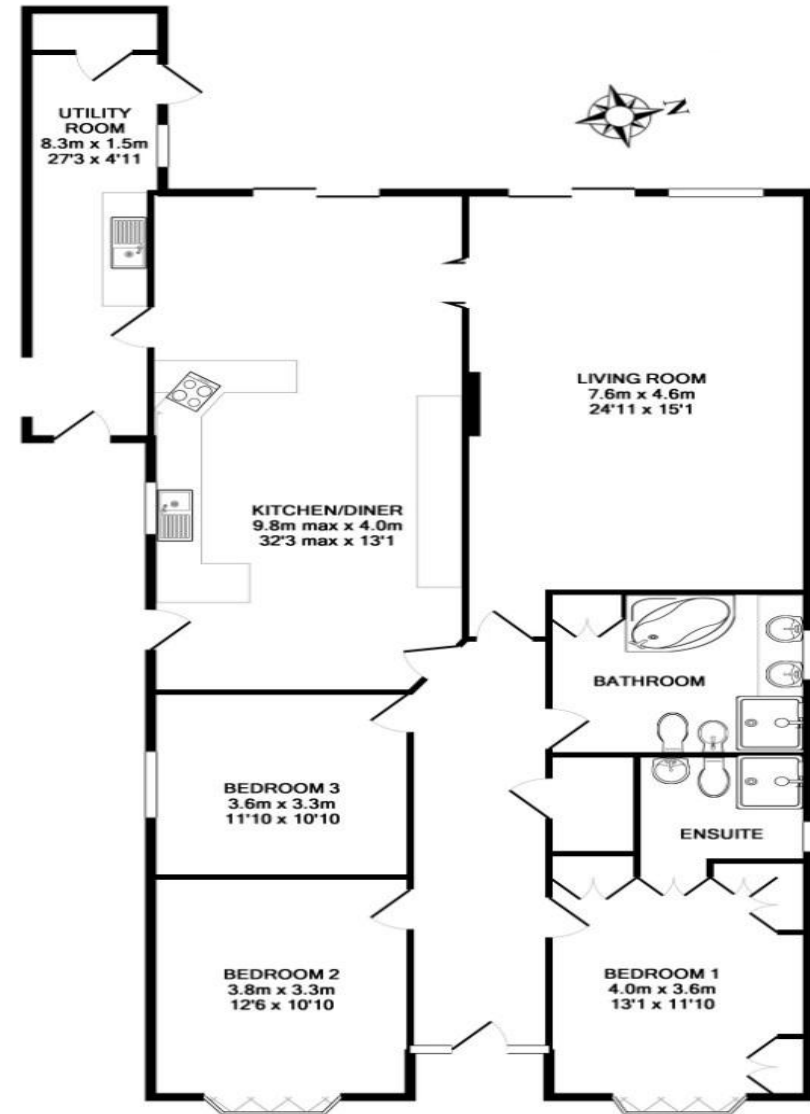
**TWYNHAM ROAD, MAIDENHEAD**

Asking Price: £750,000

## 4 Twynham Road, Maidenhead, SL6 5AS

A particularly spacious detached bungalow located in a highly regarded residential road just over 1 mile west of the town and station and a short walk from Newlands Girls School. The property, which would now benefit from some updating, has enormous potential for extension and re-modelling and benefits from a large (circa 100') west facing rear garden and an "in and out" driveway providing parking for 2/3 cars.

Local schools are highly regarded and transport links are excellent. There is a mainline station into London Paddington (fast train 20 minutes) and the Elizabeth Line provides a direct link to the City. Both M4 and M40 are close by with Heathrow airport 30 minutes away.



TOTAL APPROX. FLOOR AREA 159.0 SQ.M. (1712 SQ.FT.)

Whilst every attempt has been made to ensure the accuracy of the floor plan contained here, measurements of doors, windows, rooms and any other items are approximate and no responsibility is taken for any error.



