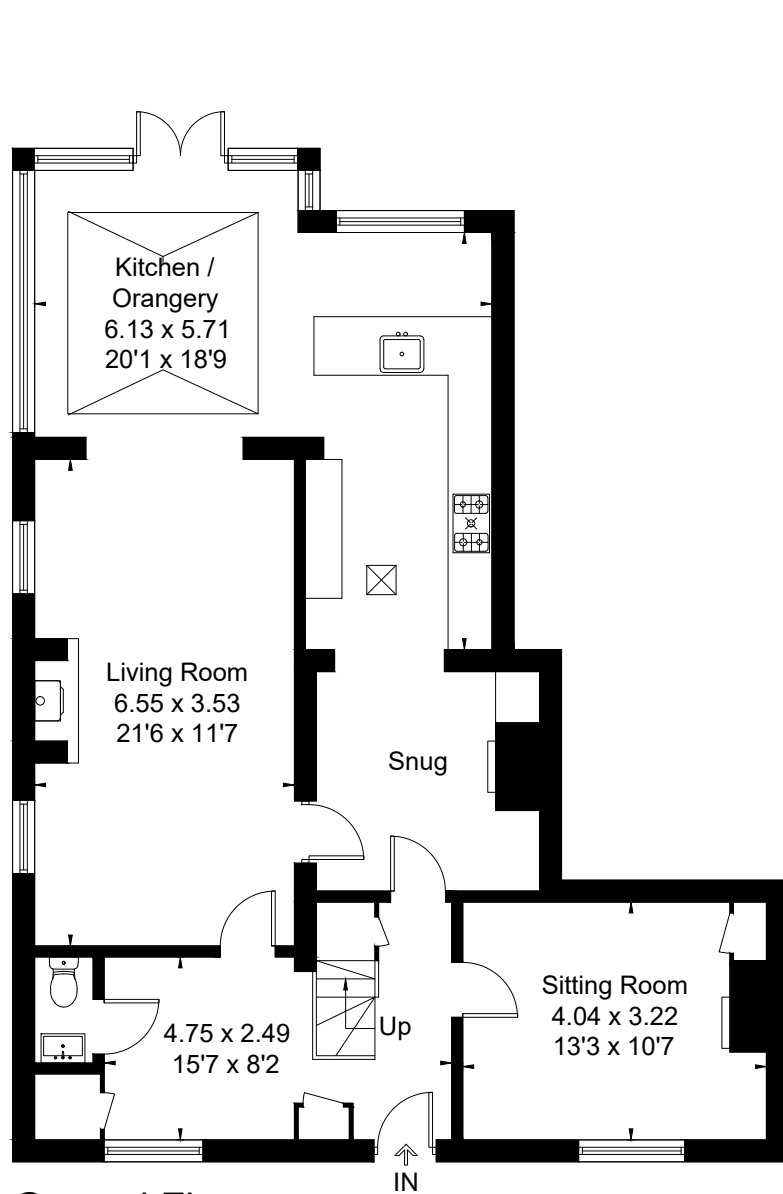
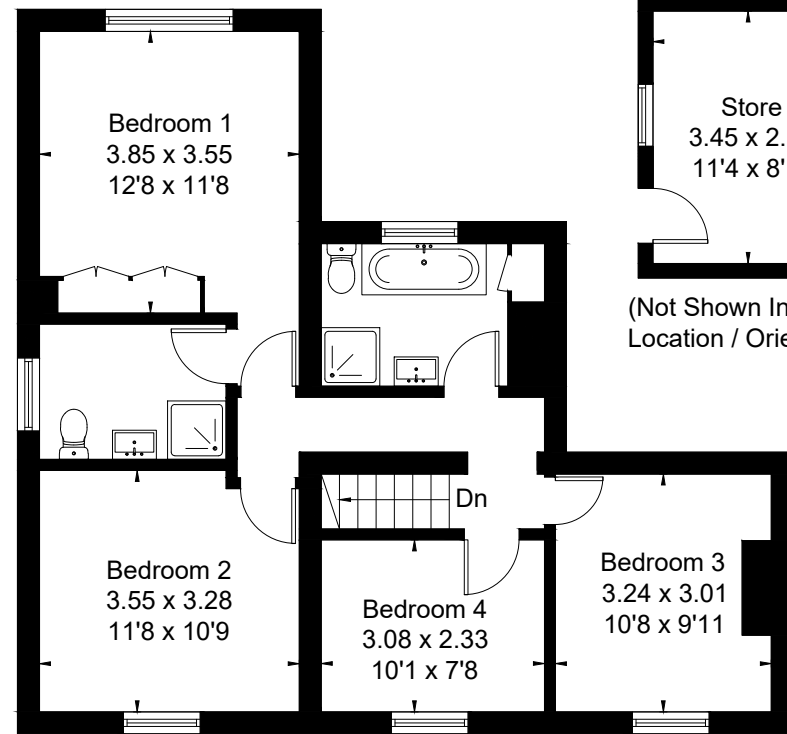
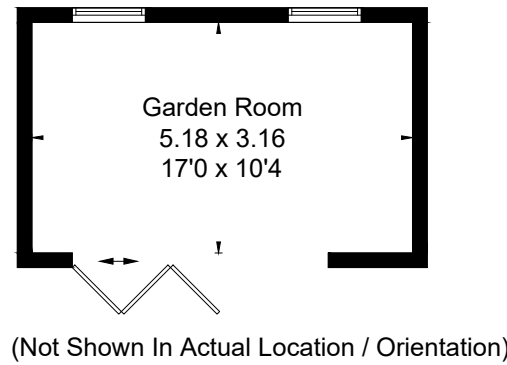


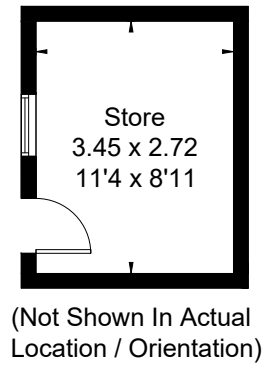
Approximate Floor Area = 159.5 sq m / 1717 sq ft
Outbuilding = 25.7 sq m / 277 sq ft
Total = 185.2 sq m / 1994 sq ft



Ground Floor



First Floor



This floor plan has been drawn in accordance with RICS Property Measurement 2nd edition.

All measurements, including the floor area, are approximate and for illustrative purposes only. @fourwalls-group.com #106784