



Hutchings Street, E14

£575,000

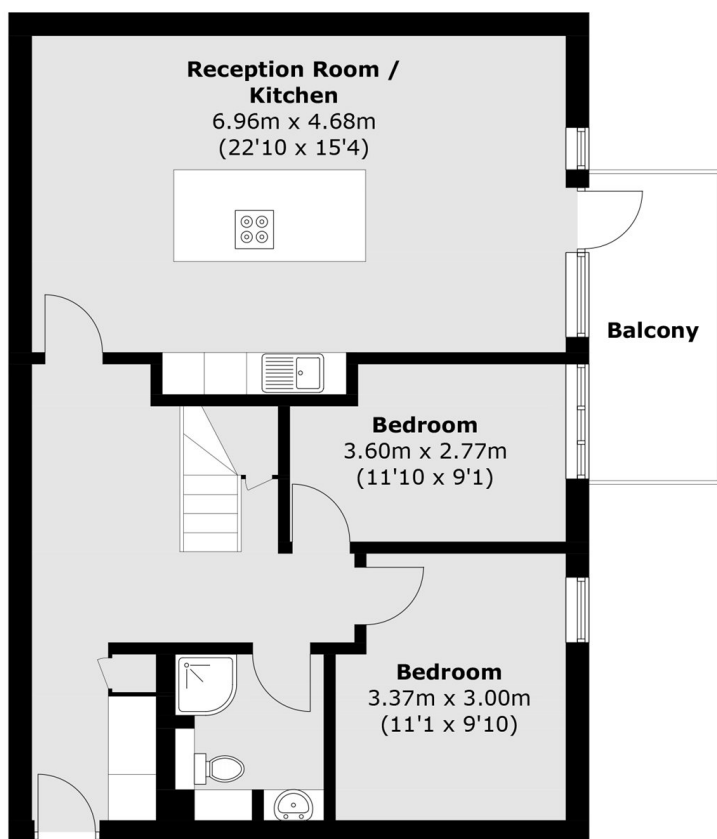
We are pleased to present this three bedroom, two bathroom apartment conveniently situated off Westferry Road. Offering over 1000 Square Feet of living space, this property is of a modern specification throughout, has both a balcony and a 215 Square Feet terrace and is set up as a split level arrangement. Additional features include integrated kitchen appliances, an open plan kitchen/living area, an abundance of natural light and parking available.

Hutchings Wharf is located conveniently near Westferry road, home to a wide selection of local amenities such as restaurants, pubs and cafes. Canary Wharf station is 0.8 miles away, allowing access to a number of transport links with routes into the City. South Quay DLR is also 0.6 miles away.

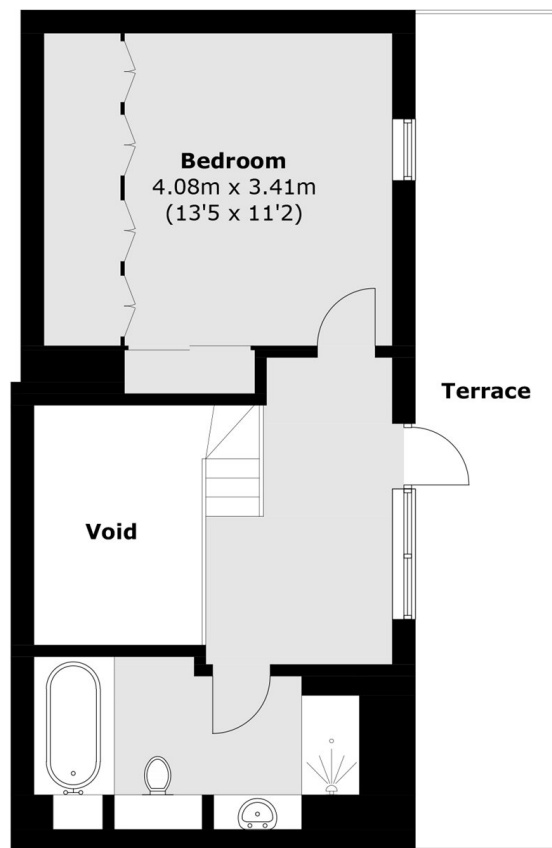
Features

- Split Level
- Gated Parking Available
- Modern Throughout
- Three Bedrooms
- 1185 Square Feet
- Balcony and Terrace

Hutchings Street, London, E14



Fourth Floor



Fifth Floor

Total area (approx.): 110.1 sq. m (1,185.1 sq. ft)
Balcony: 6.7 sq. m (72.1 sq. ft)
Terrace: 20.0 sq. m (215.3 sq. ft)
(Excluding Void)