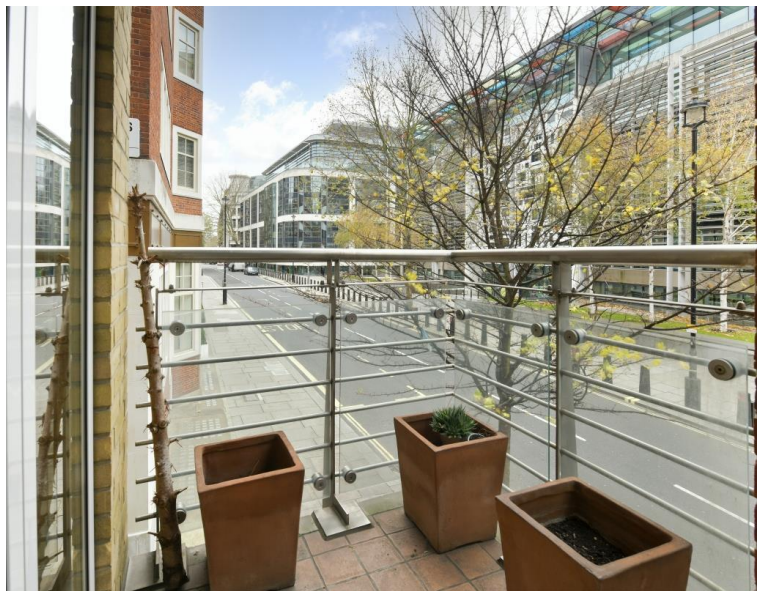




**Marsham Street, London SW1P**  
Price £700 per week - Furnished







## Description

A spacious and well presented first floor flat (with lift) in this popular development close to the Embankment and the amenities of Victoria. The property consists of master bedroom with en suite bathroom, second double bedroom, a further bathroom, reception room and an open-plan kitchen. It also benefits from a small balcony, wooden flooring in the reception room and parking is available by separate negotiation.

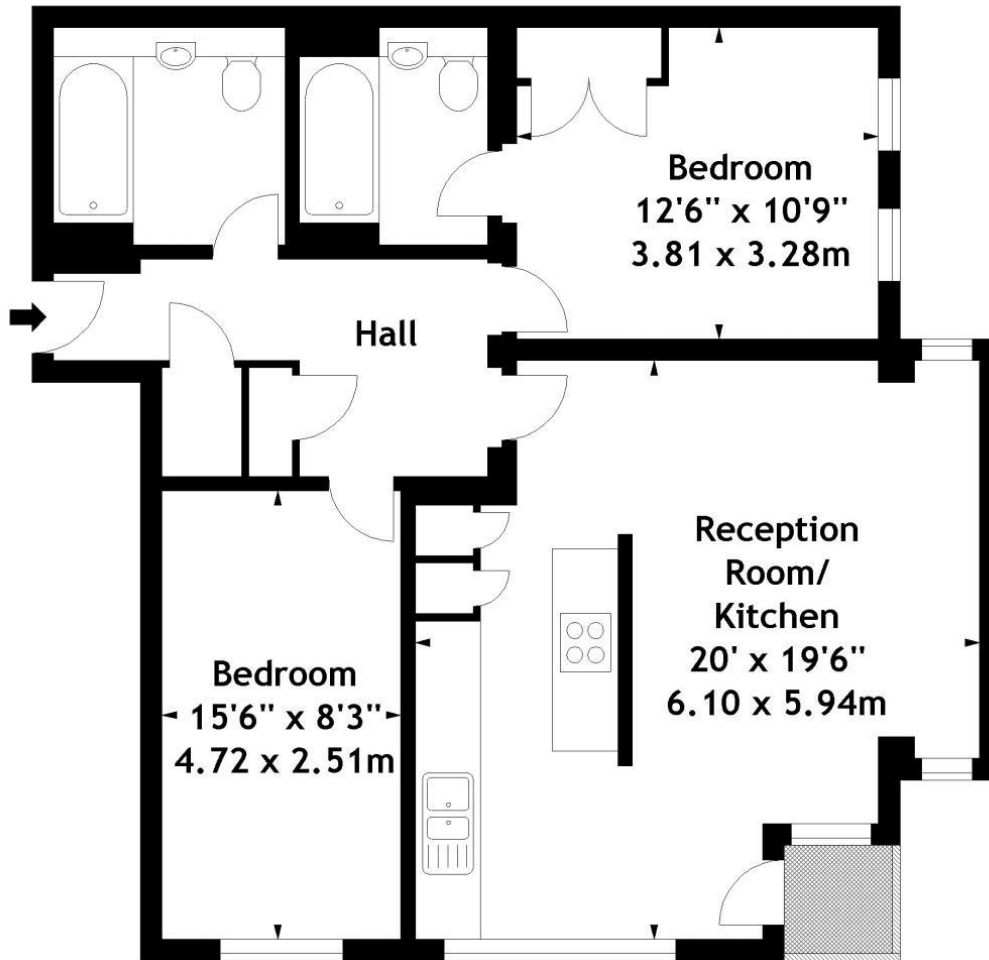
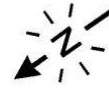
Council tax band: G. Rent is payable on a monthly basis, and you may be required to pay more than a month's rent in advance for tenancies with annual rents exceeding £100,000. You will be required to pay a 1 week holding deposit following a successful offer. Tenancies with annual rents up to £50,000 will require a 5 weeks' security deposit, while those exceeding this threshold will require a 6 weeks' deposit. Utility bills, council tax, telephone line and broadband are not included in the rent. As well as paying the rent, you may also be required to make some additional permitted payments. If your tenancy does not qualify as an APT, additional fees may apply. Please visit [jll.co.uk/fees](http://jll.co.uk/fees) for details of fees that may be payable when renting a property. To check broadband and mobile phone coverage please visit Ofcom here [ofcom.org.uk/phones-telecoms-and-internet/advice-for-consumers/advice/ofcom-checker](http://ofcom.org.uk/phones-telecoms-and-internet/advice-for-consumers/advice/ofcom-checker)

- Master bedroom with en suite bathroom
- Second double bedroom
- 1 Further bathroom
- Reception room
- Modern kitchen
- Balcony
- First floor
- Lift
- Day porter
- Approx. 855 sq ft (79 sq m)

# Floorplan

855 sq ft | 79 sq m

Approx. Gross Internal Area  
855 Sq Ft - 79.43 Sq M



First Floor

Measured in accordance with RICS guidelines. Every attempt is made to ensure accuracy, however all measurements are approximate. This floor plan is for illustrative purposes only and is not to scale.