



OLD KENT ROAD, SE1

£2,600 per month

Two bedrooms
One bathroom
Two private balconies
Modern development
Open plan
Well-presented throughout

@marshandparsons
marshandparsons.co.uk

MARSH &
PARSONS



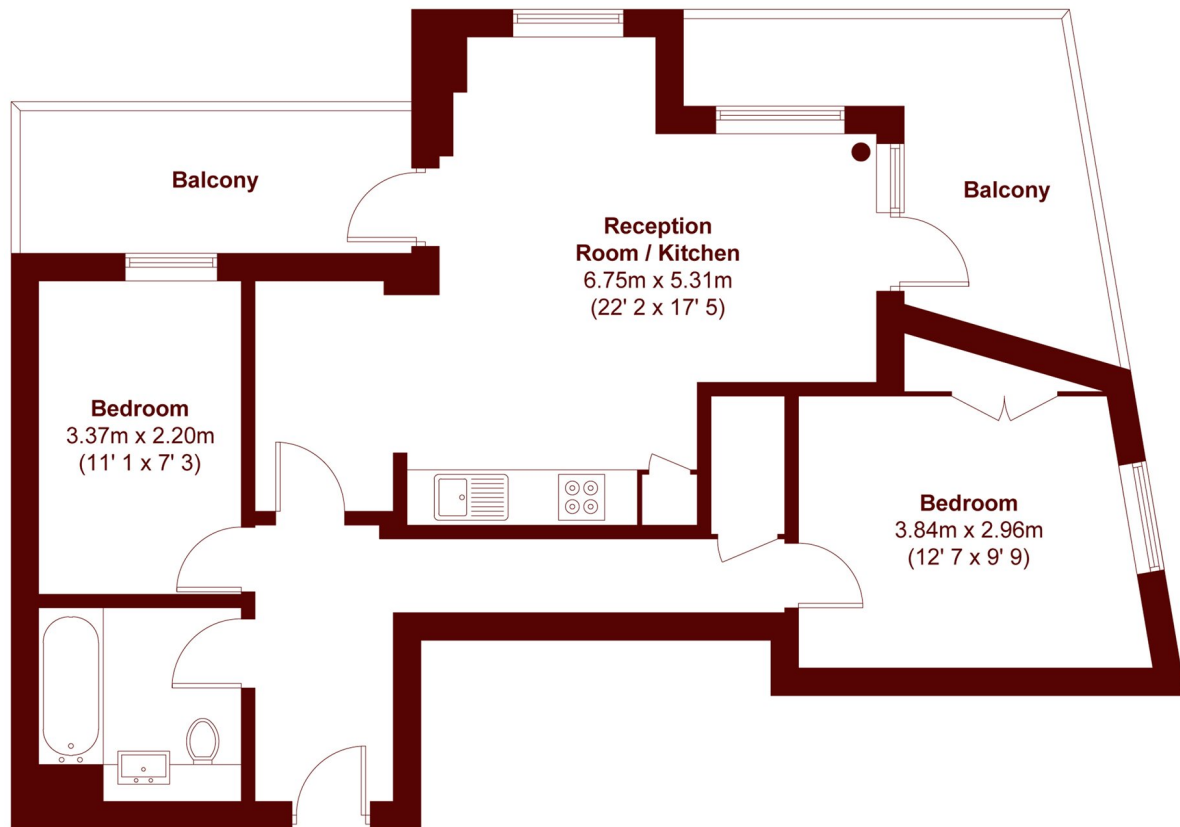
ABOUT THE PROPERTY

A well-presented two bedroom apartment forming part of the modern Howson Court development on the Old Kent Road, SE1. The accommodation comprises a spacious open plan reception room and kitchen, two well-proportioned bedrooms and a family bathroom. The property further benefits from the rare addition of two private balconies, offering a generous amount of outdoor space for a flat of this nature.

Howson Court is conveniently positioned on the Old Kent Road, an area undergoing considerable regeneration and attracting strong interest from both owner-occupiers and investors.



STEP INSIDE OLD KENT ROAD



APPROX. GROSS INTERNAL FLOOR AREA 653 SQFT / 60.7 SQM
APPROX. GROSS EXTERNAL BALCONY AREA 148 SQFT / 13.8 SQM

Kennington
020 7932 2920

Energy Rating: B We aim to make our particulars both accurate and reliable. However, they are not guaranteed; nor do they form part of an offer or contract. If you require clarification on any points then please contact us, especially if you're traveling some distance to view. Please note that appliances and heating systems have not been tested and therefore no warranties can be given as to their good working order

**MARSH &
PARSONS**