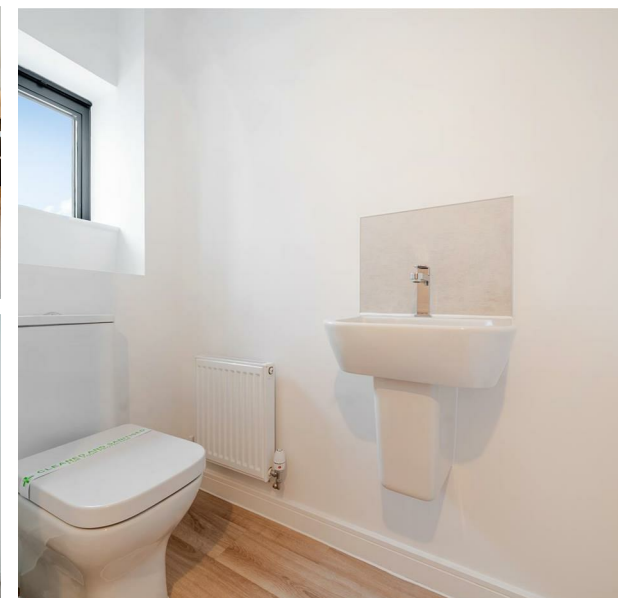


5 Bridgewater Close, Nottingham, NG2 4RT  
£1,400 Per month  
Council Tax Band: New Build

H&H  
BESPOKE



BRAND NEW AND AVAILABLE NOW!

Nestled in the charming area of Bridgewater Close, Nottingham, this delightful brand new end-terrace house presents an excellent opportunity for those seeking a comfortable and modern living space. The property boasts two well-proportioned bedrooms, making it ideal for small families, couples, or individuals looking for extra room.

Upon entering, you will find a welcoming reception room that offers a perfect setting for relaxation or entertaining guests. The layout is both practical and inviting, ensuring that every corner of the home is utilised effectively. The house features two bathrooms, providing convenience and privacy for all occupants, which is a rare find in properties of this size.

Additionally, the property includes parking for one vehicle and a private rear garden a valuable asset in this bustling area. The location itself is well-connected, offering easy access to local amenities, schools, and



13 Sherrard Street, Melton Mowbray, Leicestershire, LE13 1XH  
0333 242 3760  
Beth@houseandhomebespoke.co.uk

Bridgewater Close, Nottingham, NG2

Approximate Area = 834 sq ft / 77.4 sq m  
For identification only - Not to scale



Floor plan produced in accordance with RICS Property Measurement 2nd Edition, Incorporating International Property Measurement Standards (IPMS2 Residential). ©rithecom 2025. Produced for House and Home Bespoke. REF: 1362912

Energy Efficiency Rating		
	Current	Potential
Very energy efficient - lower running costs		
(92 plus) A		95
(81-91) B	82	
(69-80) C		
(55-68) D		
(39-54) E		
(21-38) F		
(1-20) G		
Not energy efficient - higher running costs		
England & Wales		EU Directive 2002/91/EC