



Hampton Tower 75 Marsh Wall

, LONDON E14 9RJ

- One-bedroom, one-bathroom apartment
- 24-hour concierge and security service
- Swimming pool, spa, and relaxation areas
- Landscaped gardens and communal terraces
- CTB-E
- Open-plan living and dining area
- Fully equipped gym and wellness facilities
- Residents' lounge and co-working spaces
- EPC-B

£3,250 Per Month



Local Authority **Tower Hamlets**
Council Tax Band **E**
EPC Rating **B**

Type 06

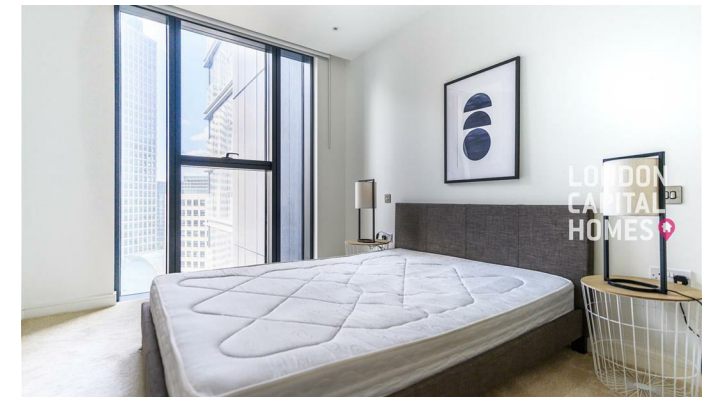
Total Area - 58.29 m² / 627 sq.ft.

1 bedroom apartment

Floors 02-14

Plots 2.06, 3.06, 4.06, 5.06, 6.06, 7.06, 8.06,
9.06, 10.06, 11.06, 12.06, 13.06 & 14.06

Kitchen/Living/Dining Area	8.81m x 3.61m	28'9" x 11'10"
Bedroom	6.12m x 2.80m	20'0" x 9'2"
Bathroom	2.22m x 2.12m	7'3" x 6'11"



London Office Office

Spaces Victoria, 25 Wilton Road, Pimlico,
London, SW1V 1LW

Contact

020 3084 3094
XL@londonvictoriagroups.co.uk
www.londonvictoriagroups.co.uk

Agents Note: Whilst every care has been taken to prepare these particulars, they are for guidance purposes only. All measurements are approximate and for general guidance purposes only and whilst every care has been taken to ensure accuracy, they should not be relied upon and potential buyers/tenants are advised to recheck the measurements.