



Gloucester Road, SW7

£3,500,000

Dexters



Gloucester Road, SW7

Cranley Mansions is an attractive red-brick period mansion block situated in the heart of South Kensington. Located on the raised ground floor, this impressive apartment benefits from exceptional ceiling heights and strikingly tall doors throughout, creating a remarkable sense of space. At the heart of the property is a beautifully proportioned double reception room, flooded with natural light and offering an exceptional entertaining and living space.

The accommodation also comprises three generous double bedrooms, each benefitting from its own en suite bathroom, together with a separate kitchen and an additional guest W/C.

Cranley Mansions is prominently positioned on the corner of Old Brompton Road and Gloucester Road in the heart of South Kensington, benefiting from exceptional transport connections. Both South Kensington Underground Station and Gloucester Road Underground Station are just a short walk away, providing direct access to the District, Circle, and Piccadilly lines and enabling convenient travel across Central London, to the West End, the City, and Heathrow Airport.

Features

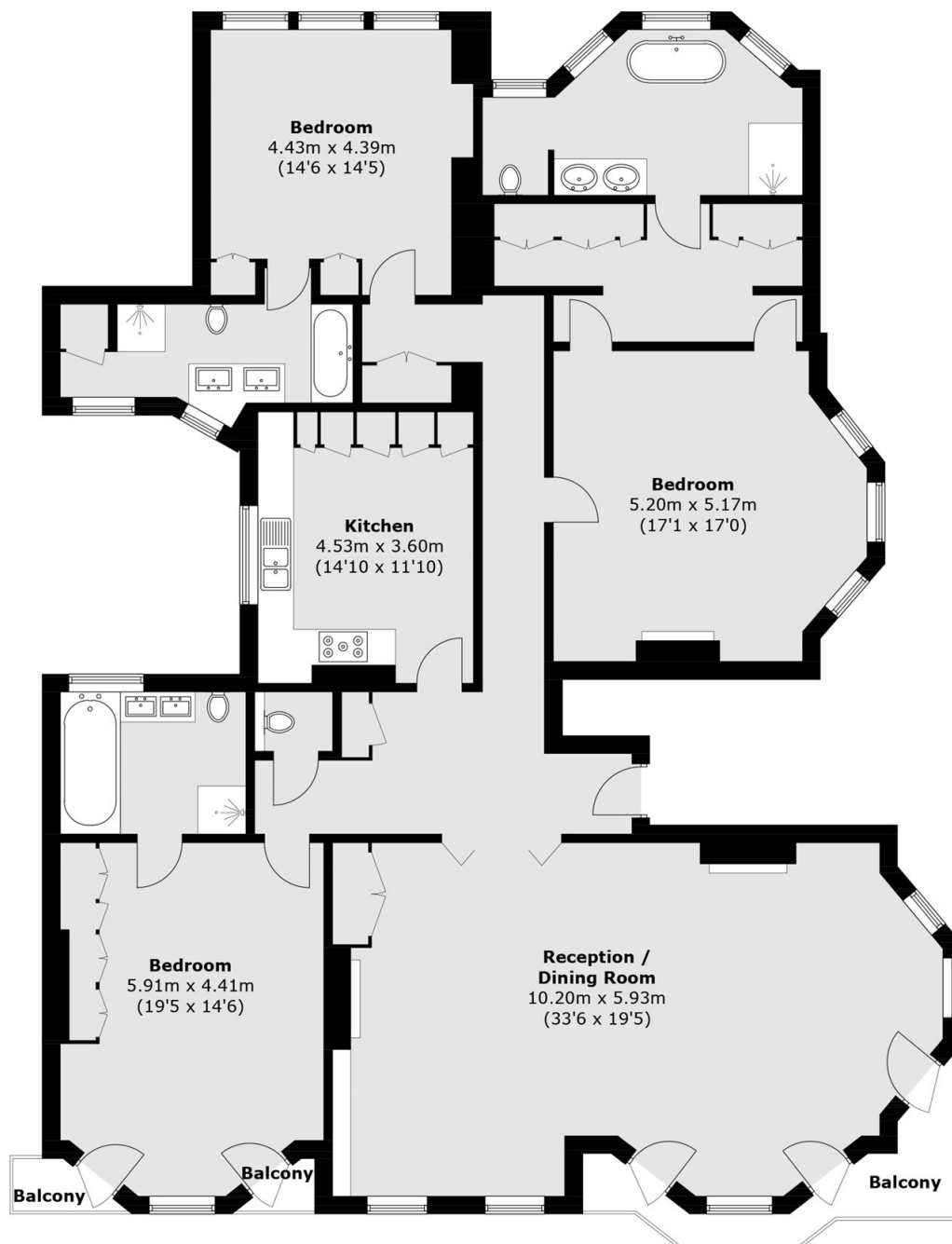
- Highly Sought After Location
- High Ceilings
- Immaculate Finish
- No Ongoing Chain
- Share Of Freehold
- Walking Distance Of Tube







Gloucester Road, London, SW7



Raised Ground Floor

Total area (approx.): 210.1 sq. m (2,261.5 sq. ft)

Balcony: 7.8 sq. m (83.9 sq. ft)