



4, Westham  
Street, Lancaster, LA1 3AU

4, Westham Street, , Lancaster

## The property at a glance



- Available Now
- Two Bedroom Terrace
- Part Furnished
- White Goods
- EPC Rating D
- Council Tax Band B
- Rear Yard
- Street Parking

**R&B**  
ESTATE AGENTS

GET IN TOUCH TODAY  
01524 889000  
lancaster@rbestateagents.co.uk  
www.rbestateagents.co.uk

**£850**

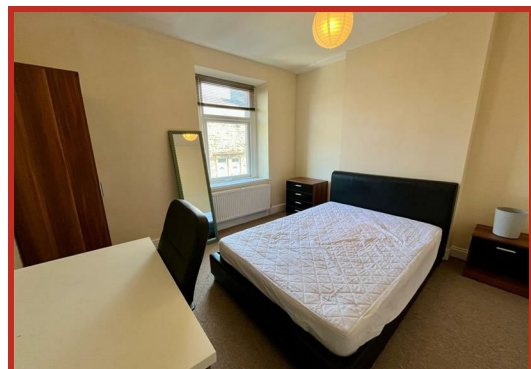
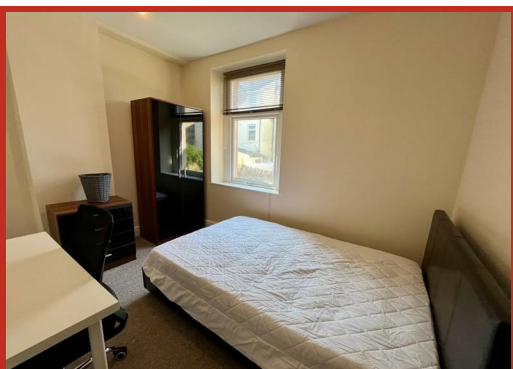
# Get to know the property



Nestled in the charming area of Westham Street, Lancaster, this delightful mid-terrace house offers a perfect blend of comfort and convenience. With two well-proportioned bedrooms, this property is ideal for small families, couples, or individuals seeking a cosy home in a vibrant community.

Located in Lancaster, this home benefits from excellent local amenities, including shops, schools, and parks, all within easy reach. The area is well-connected, providing convenient access to public transport links, making commuting a breeze.

This mid-terrace house on Westham Street presents an excellent opportunity for those looking to settle in a friendly neighbourhood with a strong sense of community. With its appealing features and prime location, this property is not to be missed.



4 Westham Street, Lancaster,  
LA1 3AU



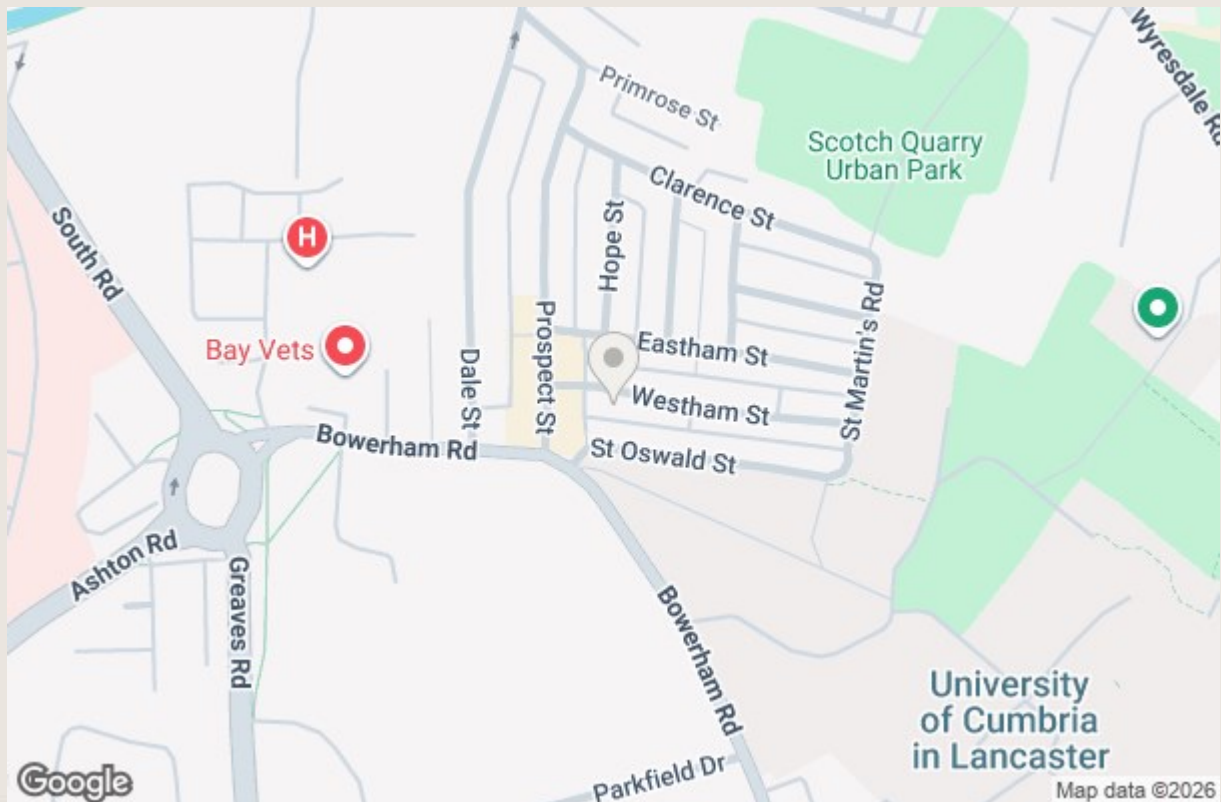
**GET IN TOUCH TODAY**

01524 889000

[lancaster@rbestateagents.co.uk](mailto:lancaster@rbestateagents.co.uk)

[www.rbstateagents.co.uk](http://www.rbstateagents.co.uk)

# Take a nosey round



**GET IN TOUCH TODAY**  
 01524 889000  
 lancaster@rbestateagents.co.uk  
 www.rbestateagents.co.uk

Energy Efficiency Rating	
Current	Potential
Very energy efficient - lower running costs (92 plus) <b>A</b> (81-91) <b>B</b> (69-80) <b>C</b> (55-68) <b>D</b> (39-54) <b>E</b> (21-38) <b>F</b> (1-20) <b>G</b> Not energy efficient - higher running costs	89 61 England & Wales EU Directive 2002/91/EC

Environmental Impact (CO <sub>2</sub> ) Rating	
Current	Potential
Very environmentally friendly - lower CO <sub>2</sub> emissions (92 plus) <b>A</b> (81-91) <b>B</b> (69-80) <b>C</b> (55-68) <b>D</b> (39-54) <b>E</b> (21-38) <b>F</b> (1-20) <b>G</b> Not environmentally friendly - higher CO <sub>2</sub> emissions	England & Wales EU Directive 2002/91/EC