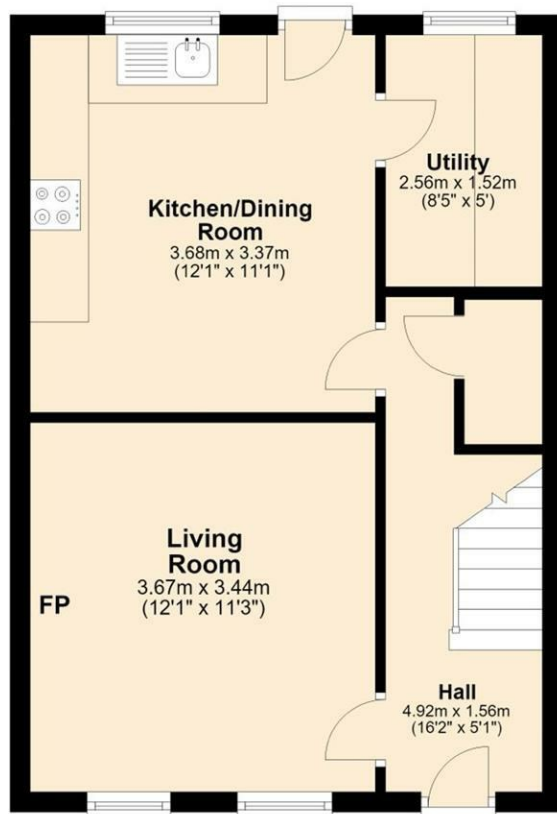
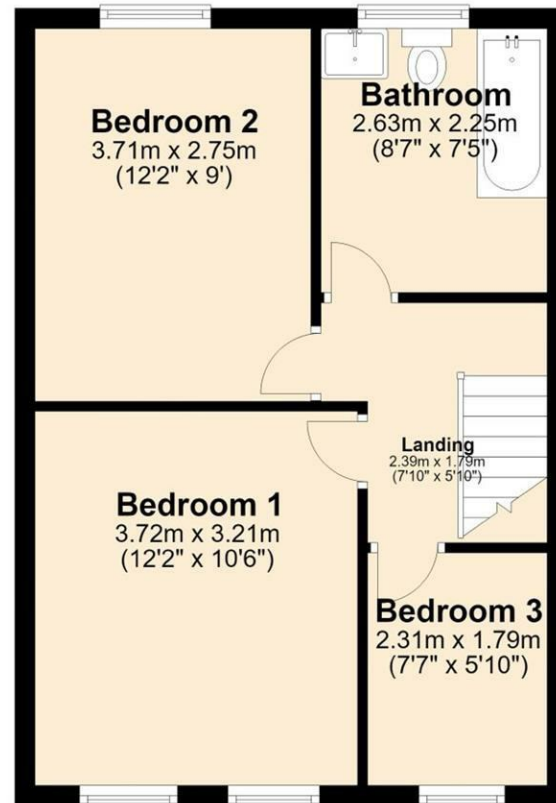




Ground Floor
Approx. 37.9 sq. metres (407.6 sq. feet)



First Floor
Approx. 38.4 sq. metres (413.3 sq. feet)



Total area: approx. 76.3 sq. metres (820.8 sq. feet)

Curate Road, Liverpool, Merseyside L6 0BZ

Offers In Excess Of £150,000

3 Bedroom 2 Reception 1 Bathroom C

Stunning Fully Refurbished Three Bedroom Home – Exceptional Finish – A True Turn-Key Property with Instant Wow Factor

Hewitt Adams is proud to present FOR SALE this outstanding three-bedroom semi-detached home on the ever-popular Curate Road, Liverpool.

Having undergone a comprehensive refurbishment in recent years, this beautiful property has been transformed to an exceptional standard throughout, offering stylish, contemporary living that is ready to move straight into. Combining high-quality finishes with impressive energy efficiency, this is a home that will appeal to a wide range of buyers, from first-time purchasers to growing families and investors alike.

From the moment you step inside, the quality and attention to detail are immediately apparent. The accommodation briefly comprises a welcoming entrance hallway, a bright and spacious lounge, a superb modern kitchen/diner ideal for entertaining, a stylish family bathroom, and three well-proportioned bedrooms.

Externally, the property benefits from a private rear yard and convenient on-street parking.

Offering the perfect blend of character, style, and practicality, this fantastic home truly delivers a "walk-in and wow" experience. Early viewing is highly recommended to fully appreciate everything this exceptional property has to offer.

Front Entrance

Front door, up-lighter.

Lounge

12'1x11'3 (3.68mx3.43m)

Double glazed window, radiator, power points

Kitchen / Diner

12'1x11' (3.68mx3.35m)

Wall and base units with worktops, inset sink and drainer with mixer tap, space for white goods, integrated electric oven, gas hob and extractor fan, LVT flooring, door and window to the rear elevation.

Utility

8'5x5 (2.57mx1.52m)

Wall and base units, inset sink, space for a washing machine, extractor fan, LVT flooring, window to the rear elevation.

1st Floor

Bedroom 1

12'2x10'6 (3.71mx3.20m)

Double glazed window to the front elevation, radiator, power points, wall lights.

Bedroom 2

12'2x9 (3.71mx2.74m)

Double glazed window to the rear elevation, radiator, power points, wall lights

Bedroom 3

7'7x10 (2.31mx3.05m)

Double glazed window to the rear elevation, radiator, power points, wall lights.

Bathroom

Comprising bath with shower above and glass screen, low level WC, wash basin vanity unit with mixer tap, heated towel radiator, tiled walls, LVT flooring, extractor fan, double glazed window.

Externally

There is on street Parking and a good sized rear Yard.

