

FOR SALE

Kentish Town Road, Camden NW1

PRICE £975,000.00



2 Bedroom



Kitchen



1 Reception



1 Bathroom



Roof Terrace



Parking Permit

Kentish Town Road, Camden NW1

PRICE £975,000.00

We are delighted to present this stunning apartment set within a striking modern development, where industrial character meets refined contemporary design. This exceptional home is defined by expansive glass doors opening directly onto a private terrace, flooding the interior with natural light and enhancing the generous open-plan living space. The seamless flow between the living, dining, and kitchen areas creates an inviting environment ideal for both everyday living and entertaining.

The bespoke kitchen has been finished to an excellent specification, featuring elegant quartz worktops alongside integrated KitchenAid and Bosch appliances. Both bedrooms are of a good size, while the sleek family bathroom is beautifully appointed with high-quality finishes. Further highlights include underfloor heating throughout with independent digital zonal controls, as well as a separate utility area for added practicality.

Residents enjoy exclusive access to a beautifully landscaped communal atrium, secure cycle storage, and a lift that opens directly outside the apartment. The building also offers individual mailboxes and smart parcel lockers, combining modern convenience with thoughtful design.

Perfectly positioned just moments from Kentish Town Underground (Northern Line, approximately 0.3 miles) and Kentish Town West Overground (approximately 0.3 miles), the property provides excellent connectivity across London. With Primrose Hill, Hampstead, and an array of cafés, boutiques, and green spaces close by, this apartment offers an outstanding lifestyle in one of North London's most sought-after neighbourhoods.







975,000.00



Leasehold



London Borough of Camden



Council Tax Band



EPC Band



2 Bedroom



1 Bathroom



1 Reception



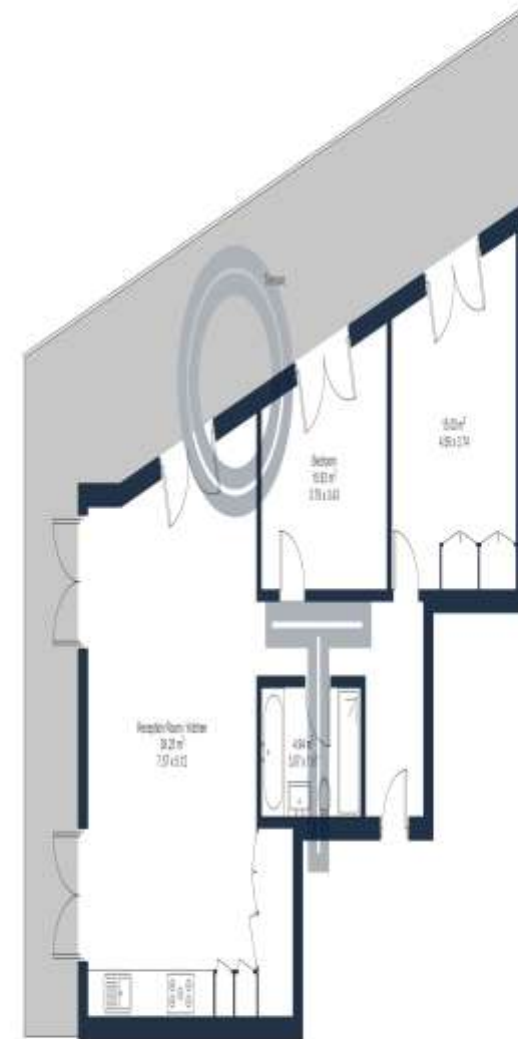
Roof Terrace



Parking Permit

Kentish Town Road, NW1

Approximate Gross Internal Area = 81.15 m² / 873.49 ft²



Brought to you by:

OLIVERS TOWN

This plan is for layout guidance only and is not to scale unless stated. All dimensions, including windows, doors, fittings, and the total area, are approximate measurements. Produced by a



KENTISH TOWN | 189 Kentish Town Rd | London | NW5 2JU | T: 020 7284 1222 | hello@oliverstown.com

ASSOCIATED MAYFAIR | 121 Park Lane | London | W1K 7AG | T: 020 3368 8602 | hello@oliverstown.com

