




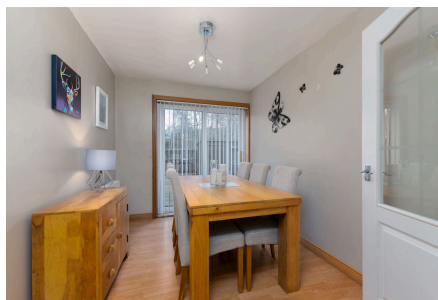


Property Webb
At the HEART of your move

Sutherland Way, Livingston, EH54 8HR

Offers Over £170,000

 3  2  2



Well-presented 3-bedroom home set within a cul-de-sac In Sutherland Way, Livingston. Spacious dual-aspect lounge/dining room, modern upgraded shower room, excellent storage throughout, enclosed front garden and low-maintenance rear garden with open outlook. Great location close to amenities, schooling and transport links - ideal for first-time buyers, families or down sizers.

This is a home that offers more than just accommodation; it provides a lifestyle defined by comfort, simplicity and a location that continues to appeal to a wide range of buyers.

 01506 637553

 info@property-webb-co.uk

 www.property-webb.co.uk

 71 South Bridge St, Bathgate, EH48 1TJ

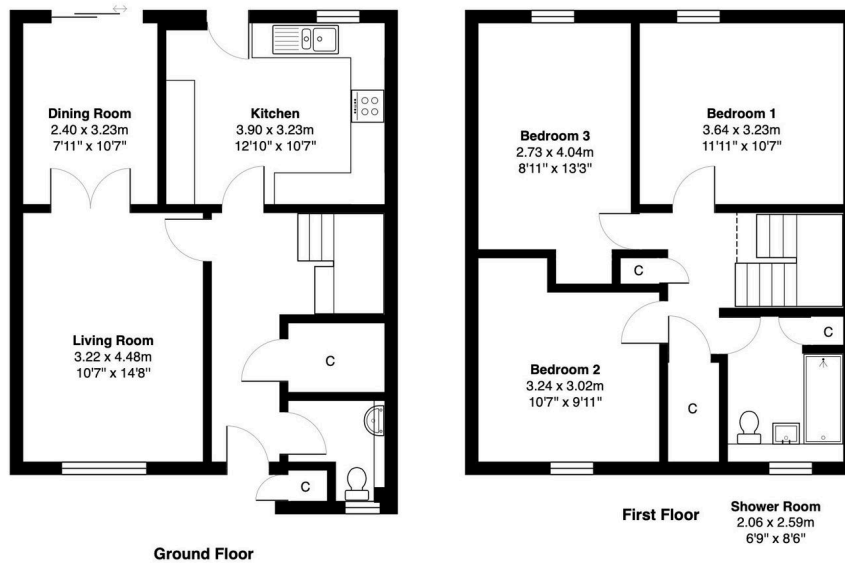


Property Webb
At the HEART of your move

Key Features

- Mid terraced family home
- Cul-de-sac location
- Spacious lounge & dining room
- Breakfasting kitchen
- 3 double bedrooms
- Fully tiled contemporary shower room
- Downstairs WC
- Great storage
- Fully enclosed rear garden
- Walking distance to Livingston North train station

314 Sutherland Way, Livingston, EH54 8HR



Total Area: 103.1 m² ... 1110 ft²

All measurements are approximate and for display purposes only

