

3

Bedrooms



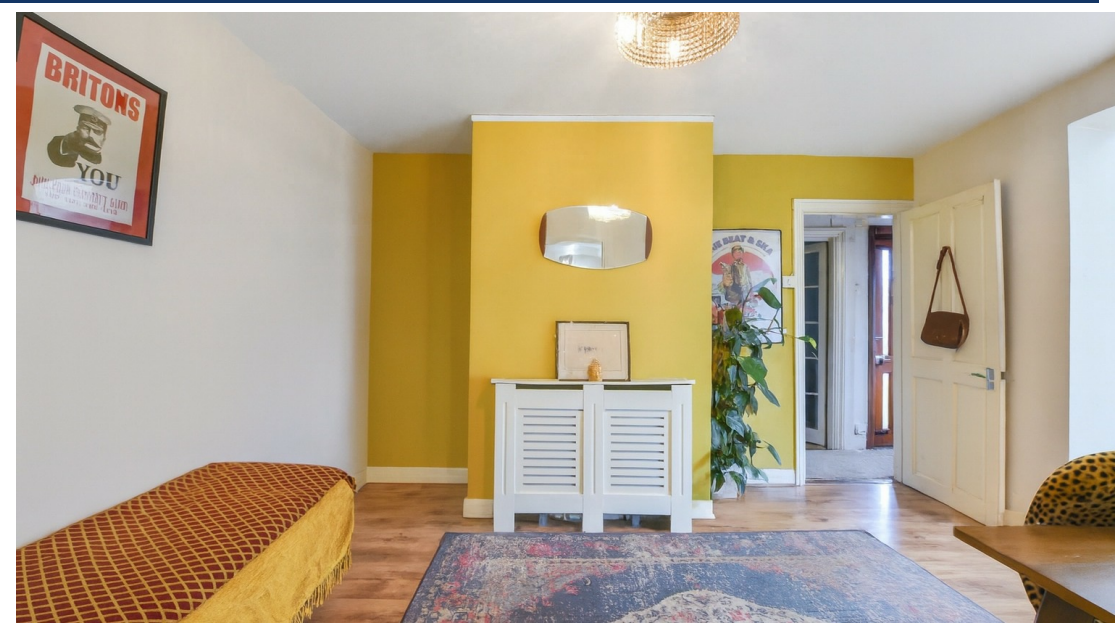
1

Bathroom



2

Receptions



Charming three-bedroom semi-detached home  
Exciting development potential  
Large plot with exceptional possibilities  
Desirable location combining rural charm and convenience  
Freehold  
EPC: AWAITING



1 Winters Farm Cottages is a charming three-bedroom semi-detached home that offers both space and potential. As you step inside, a welcoming hallway leads to a comfortable front room, a separate dining room which flows into a bright and airy conservatory, and a well-proportioned kitchen. A convenient downstairs shower room completes the ground floor. Upstairs, three generously sized bedrooms provide plenty of space for family living. The property has scope to be developed which presents an exciting opportunity to extend or remodel to suit various needs, subject to the necessary planning permissions.

Outside, the property occupies a particularly large plot, offering exceptional scope for future development. Subject to the relevant consents, the garden could be divided to create space for an additional dwelling. The grounds also feature several useful outbuildings and summerhouses, along with a delightful small fruit orchard, creating an idyllic and versatile outdoor setting.

The location combines convenience with a rural feel, being well-placed for access to Canterbury's historic city centre with its array of shops, restaurants and cultural attractions, as well as excellent local schools. For those who enjoy the outdoors, the surrounding countryside offers beautiful walks, cycling routes and bridleways, making this a home that perfectly balances town and country living.

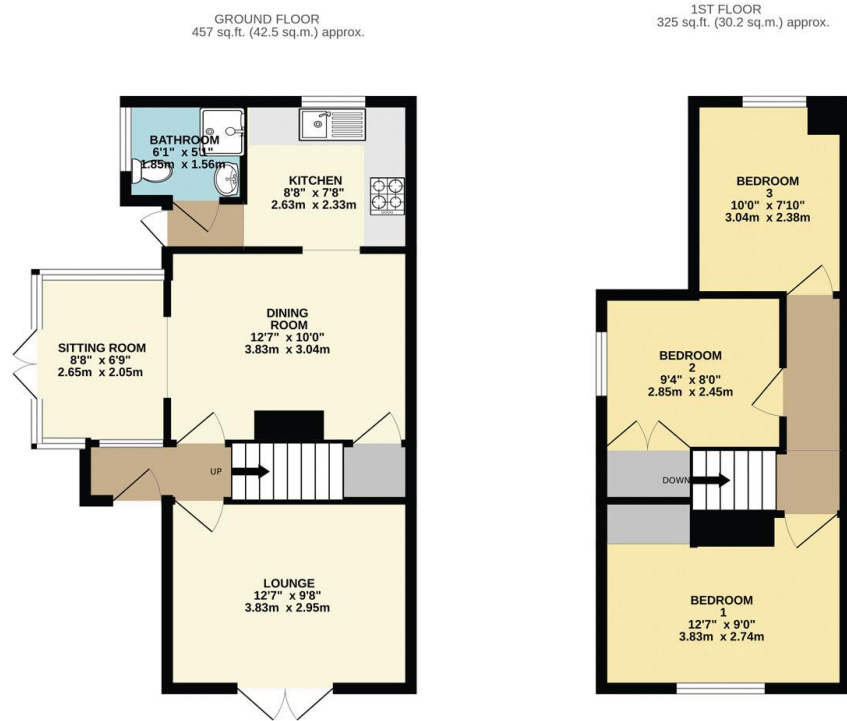
Council Tax: C

Tenure: Freehold

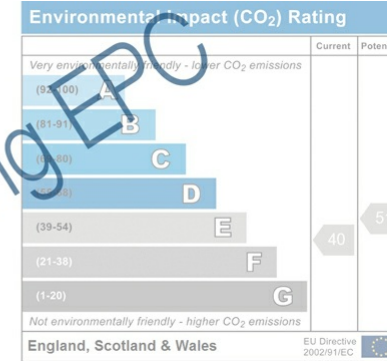
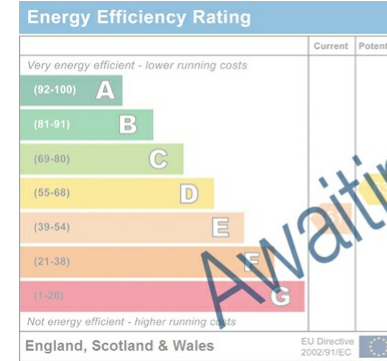
EPC rating: TBC

Photos Have been enhanced by AI





TOTAL FLOOR AREA: 782 sq.ft. (72.6 sq.m.) approx.  
 While every attempt has been made to ensure the accuracy of the floorplan contained here, measurements of doors, windows, rooms and any other items are approximate and no responsibility is taken for any error, omission or mis-statement. This plan is for illustrative purposes only and should be used as such by any prospective purchaser. The services, systems and appliances shown have not been tested and no guarantee as to their operability or efficiency can be given.  
 Made with Metropix ©2025



Scan me for more info

