

# HARRY CHARLES

Property Specialists



Acme Road, Watford, WD24 5AH

**£1,800 Per month**



**\*\* WELL PRESENTED THREE BEDROOM TERRACED HOME - ENTRANCE HALL - LOUNGE/DINER - KITCHEN- DOWNSTAIRS BATHROOM - 3 BEDROOMS OFF LANDING - REAR GARDEN - COUNCIL TAX BAND C - AVAILABLE 31ST JULY \*\*** We are delighted to offer for let on an unfurnished basis this well presented three bedroom terraced house situated on this residential turning with easy access to Watford junction station and the town centre. The property comprising a spacious open plan lounge/diner with contemporary decor and solid wooden flooring, a modern fully fitted kitchen with good quality appliances which leads to the fully tiled bathroom with power shower. The upstairs accommodation offers a large master bedroom with built in wardrobes and two further good size bedrooms.

- Terraced Family Home
- Lounge/Diner
- Downstairs Bathroom
- Attractive Garden
- Available 31st July 2026
- Entrance Hall
- Fitted Kitchen
- Three Bedrooms Off Landing
- Council Tax Band C



## Additional Information

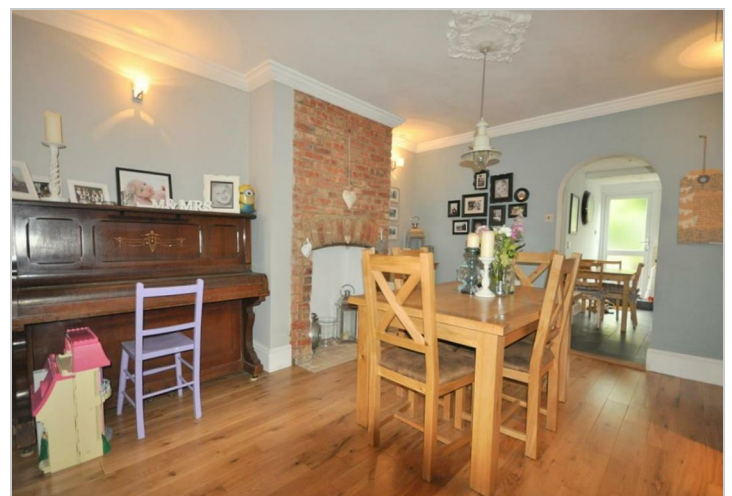
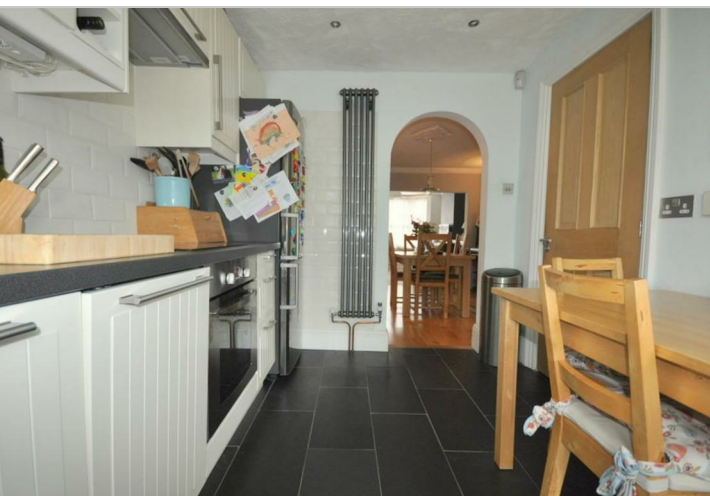
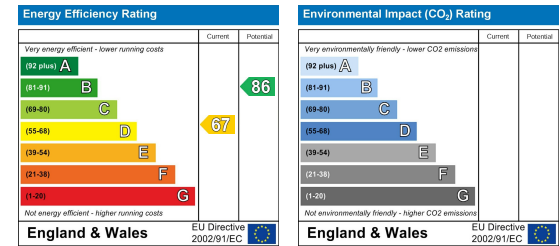
### Parking

Please note that there is on road parking to the front that has restrictions at certain times but residents parking permits are available.

## Area Map



## Energy Efficiency Graph



These particulars, whilst believed to be accurate are set out as a general outline only for guidance and do not constitute any part of an offer or contract. Intending purchasers should not rely on them as statements of representation of fact, but must satisfy themselves by inspection or otherwise as to their accuracy. No person in this firm's employment has the authority to make or give any representation or warranty in respect of the property.