



Flat - Ground Floor (EPC Rating: )

# GOLF AT BEACH HOUSE 22 WESTCLIFFE ROAD, SOUTHPORT, MERSEYSIDE. PR8

Per Week

## £15,000

### FEATURES

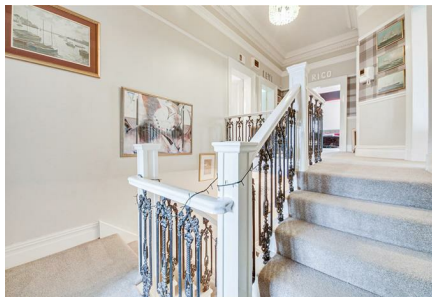
- 2026 GOLF OPEN ACCOMMODATION
- Just 1.3 miles from Royal Birkdale Golf Club
- Stylish Duplex Apartment
- Located within a grand converted Victorian residence
- Gated Driveway Parking For Multiple Vehicles
- Access to Communal Gardens
- Five Double Bedrooms
- Three Bath/Shower Rooms



 **anthony james**  
estate agents

# 5 Bedroom Flat - Ground Floor located in Southport

GOLF | CHARLOTTE HOUSE, GROUND FLOOR, 35-37 HOGHTON STREET, SOUTHPORT, MERSEYSIDE, PR9 0NS



GOLF | CHARLOTTE HOUSE, GROUND FLOOR, 35-37 HOGHTON STREET, SOUTHPORT, MERSEYSIDE, PR9 0NS



GOLF | CHARLOTTE HOUSE, GROUND FLOOR, 35-37 HOGHTON STREET, SOUTHPORT, MERSEYSIDE, PR9 0NS



GOLF | CHARLOTTE HOUSE, GROUND FLOOR, 35-37 HOGHTON STREET, SOUTHPORT, MERSEYSIDE, PR9 0NS

Call us on

01704543434

[golf@ajestateagents.co.uk](mailto:golf@ajestateagents.co.uk)  
<https://www.ajestateagents.co.uk/properties/to-rent/sort-price-asc>

Council Tax Band



Energy Efficiency Rating		
	Current	Potential
<i>Very energy efficient - lower running costs</i>		
(92 plus) <b>A</b>		
(81-91) <b>B</b>		
(69-80) <b>C</b>		
(55-68) <b>D</b>		
(39-54) <b>E</b>		
(21-38) <b>F</b>		
(1-20) <b>G</b>		
<i>Not energy efficient - higher running costs</i>		
<b>England &amp; Wales</b>	EU Directive 2002/91/EC	

All measurements are approximate and are intended for general reference only. Floor plans may not be to scale. Viewers are advised to verify all measurements and dimensions independently. Plan produced using Planity.

Agents Note: Whilst every care has been taken to prepare these particulars, they are for guidance purposes only. All measurements are approximate and are for general guidance purposes only and whilst every care has been taken to ensure their accuracy, they should not be relied upon and potential buyers are advised to recheck the measurements.

