



Brockley Cross, SE4

£325,000

Stamp Duty Paid Or Legal Fees Paid By Developer - Incentive Available - Please Enquire For More Information

Designed by award winning architects, Brockley Cross is an exquisite development of highly energy efficient homes nestled in the heart of the eponymous leafy London suburb of Brockley. Situated less than 5 minutes walk from the train and Windrush line station providing direct links to London Bridge and Canada Water, these exceptionally energy efficient apartments are ready to move into!

The area is surrounded by lush green spaces such as Hilly Fields, Peckham Rye Common, and the Brockley Nature Reserve, perfect for leisurely strolls and outdoor activities. Just a stone's throw away, the trendy neighbourhood of Peckham adds to the appeal with its vibrant cultural scene and eclectic mix of shops, cafes, pubs and entertainment.

Features

- Low Running Costs
- 10 Year Structural Warranty
- Award winning designers
- Bosch Appliances
- Share of Freehold
- No Onward Chain
- Private balconies and terraces
- Ready To Move Into!

Brockley Cross, Brockley, SE4

19

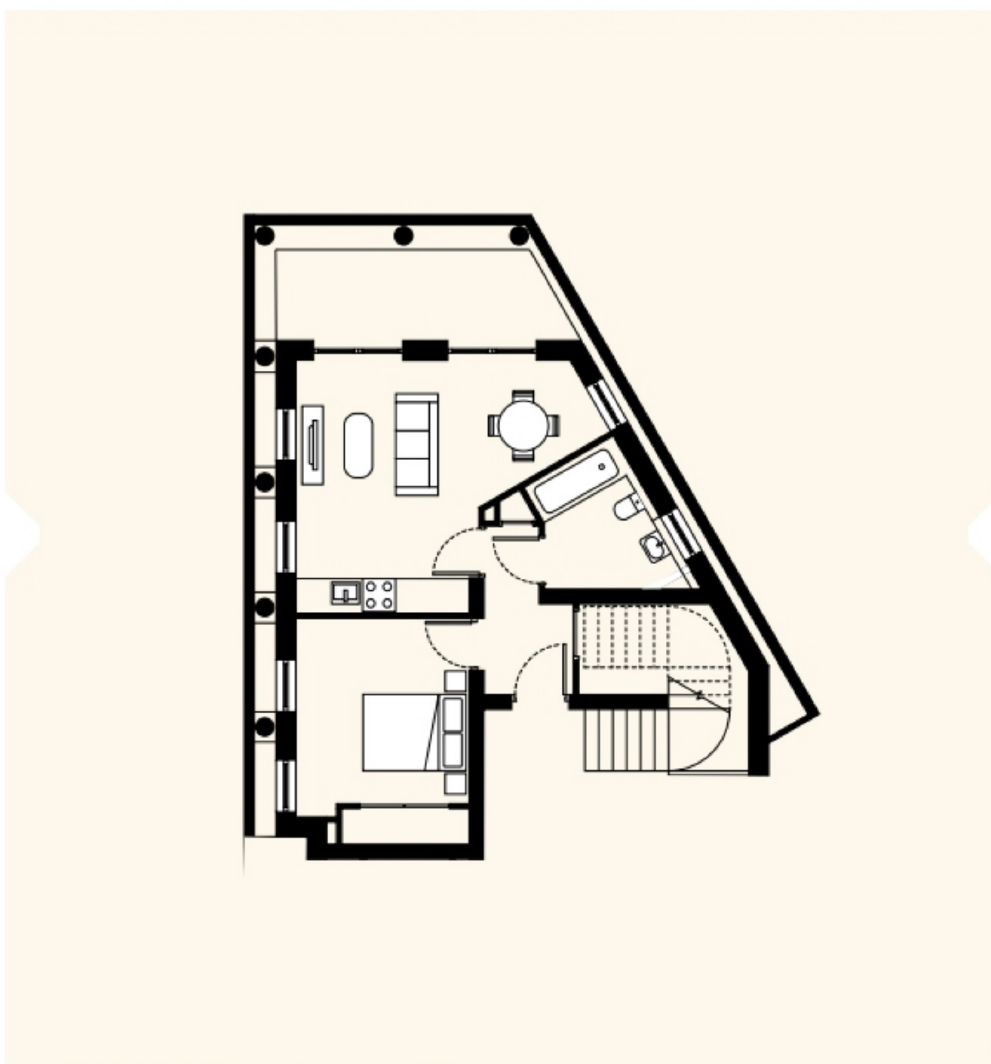
BROCKLEY

CROSS

Apartment 1

Ground Floor

1 BEDROOM | 1 BATHROOM | PRIVATE TERRACE
495 sqft // 46 m²



Dexters

New Homes South London
12 The Broadway
London
SW19 1RF
Sales
020 8674 4555

Energy Rating: . We aim to make our particulars both accurate and reliable. However they are not guaranteed; nor do they form part of an offer or contract. If you require clarification on any points then please contact us, especially if you're traveling some distance to view. Please note that appliances and heating systems have not been tested and therefore no warranties can be given as to their good working order.

 **RICS** | Regulated
Estate Agent
and Letting Agent

dexters.co.uk