



Adamson Road NW3

Parkheath
Sold on Service





Adamson Road, NW3

Asking Price £875,000

Share of Freehold

- A stylish, bright and attractive, beautifully presented home
- 2 double bedroom, 2 bathroom apartment with feature fireplace, coving and bay sash windows
- Set in this impressive red brick Victorian house
- Elegant hardwood oak flooring, underfloor sound insulation
- Entire second floor - 709 sq ft approx - Share of freehold
- 18ft reception with bespoke built-in oak alcoves with spotlights
- Separate 10ft kitchen with underfloor heating and Miele appliances
- 12ft main bedroom with wardrobe and en suite shower room with C.P.Hart fittings
- 13ft second bedroom with built-in wardrobe and second shower room
- Moments from Swiss Cottage underground and walking distance to Belsize Village, Belsize Park, Primrose Hill and the amenities of Finchley Road

Belsize Park/Hampstead
208 Haverstock Hill
NW3 2AG
Sales 020 7431 1234
Lettings 020 7431 3104
nw3@parkheath.com

South/West Hampstead
192 West End Lane
NW6 1SG
Sales & Lettings
Tel 020 7794 7111
192@parkheath.com

Kensal Rise
54-56 Chamberlayne Rd
NW10 3JH
Tel 020 8960 4845
kensal@parkheath.com

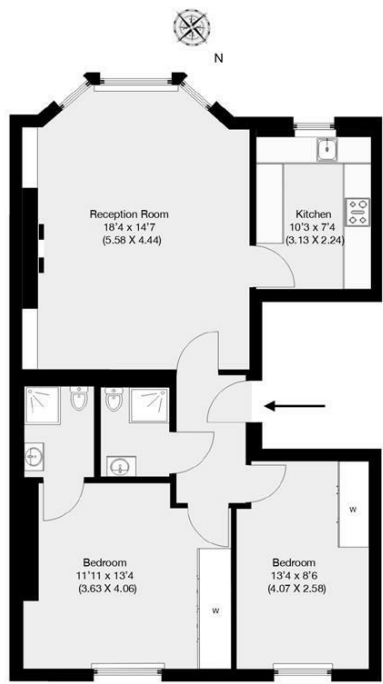
Property Management
192 West End Lane
NW6 1SG
020 7433 6174
pm@parkheath.com

www.parkheath.com

Parkheath
Sold on Service

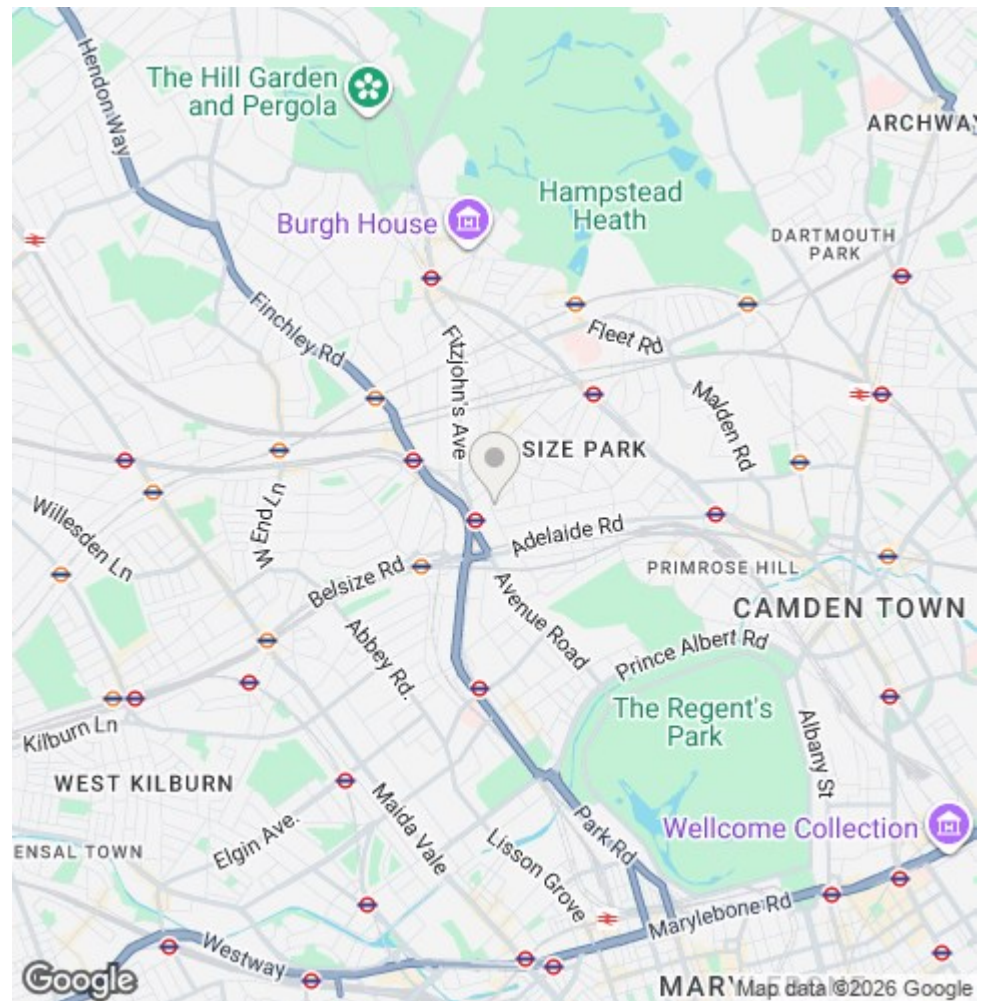
Camden Tax band F


Adamson Road, London, NW6
 Approximate Gross Internal Area 65.92 sqm / 709 sqft



Second Floor

THIS FLOOR PLAN IS PRODUCED FOR PARKHEATH SUBMITTED BY ARCHIMEDIA web: www.archi-media.co.uk
 Whilst every attempt has been made to ensure the accuracy of the floor plan contained here, measurements of doors, windows and rooms are approximate and no responsibility is taken for any error, omission or misstatement. These plans are for representation purposes only and should be used as such by any prospective buyer or lease. Specifically no guarantee is given on the gross internal floor area of the property if quoted on this plan and any figures given is initial guidance only and should be treated as such.



The particulars do not constitute part of an offer or contract. The particulars, including text, photographs and plans, are for the guidance only of prospective purchasers/tenants and must not be relied upon as statements of fact. The descriptions provided therein represent the opinion of the author and whilst given in good faith should not be construed as statements of fact. Nothing in these particulars shall be deemed a statement that the property is in good condition or otherwise or that any services or facilities are in good working order. All measurements are approximate