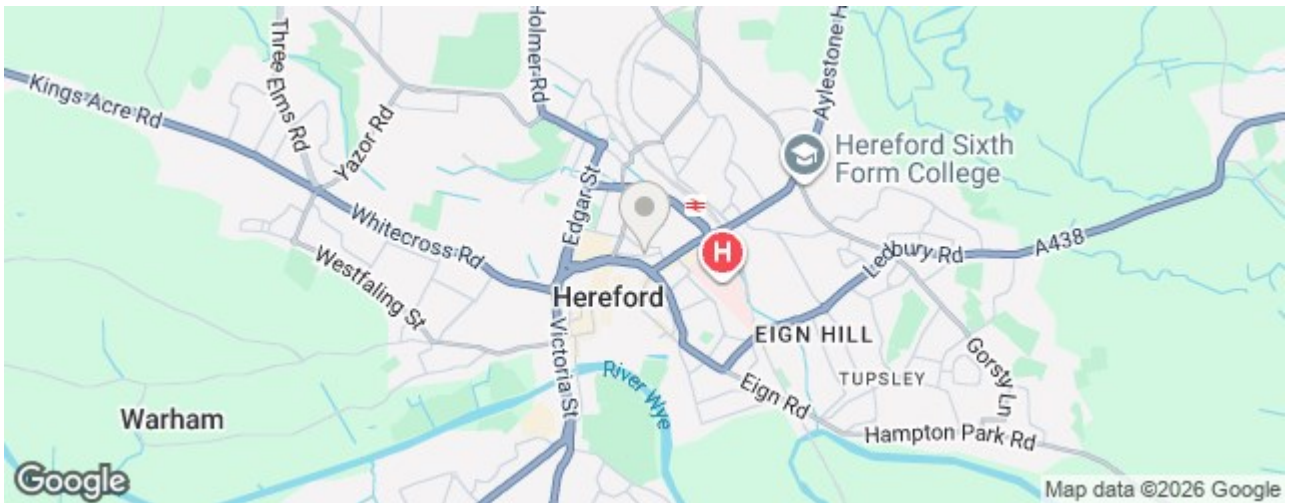


LEASEHOLD



Flat (EPC Rating: C)

APARTMENT 1, 43 CATHERINE STREET, HEREFORD, HR1 2DU

Asking Price

£115,000

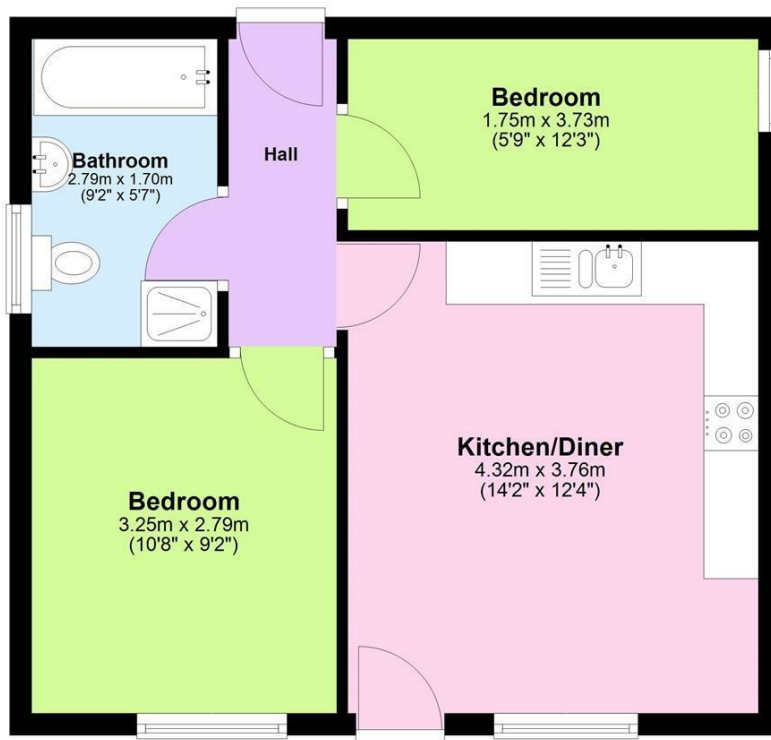


2 Bedroom Flat located in Hereford

Peacefully situated in this convenient central location, a purpose built 2 bedroom ground floor flat offering ideal first time buyer or investment accommodation. The property which is offered for sale with no onward chain has the added benefit of gas central heating, double glazing and we recommend an internal inspection.

Ground Floor

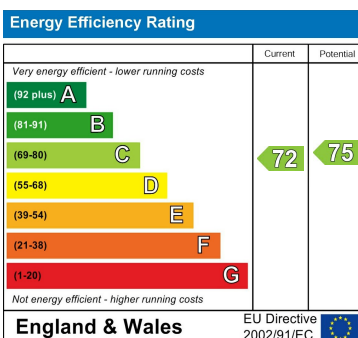
Approx. 41.0 sq. metres (440.9 sq. feet)



Total area: approx. 41.0 sq. metres (440.9 sq. feet)

Council Tax Band

Energy Performance Graph



Call us on

01432 355455

hereford@flintandcook.co.uk

flintandcook.co.uk

Agents Note: Whilst every care has been taken to prepare these particulars, they are for guidance purposes only. All measurements are approximate and are for general guidance purposes only and whilst every care has been taken to ensure their accuracy, they should not be relied upon and potential buyers are advised to recheck the measurements.

