



Uxbridge Road, W13

£400,000

Offers in excess of One of the finest, generously sized two-bedroom flats in the area, ideally located near West Ealing railway station and Ealing Broadway station with excellent links to Central London. Just moments from the shops, restaurants and cafés of Ealing Broadway, the recently refurbished property offers bright, modern interiors and is ready to move in.

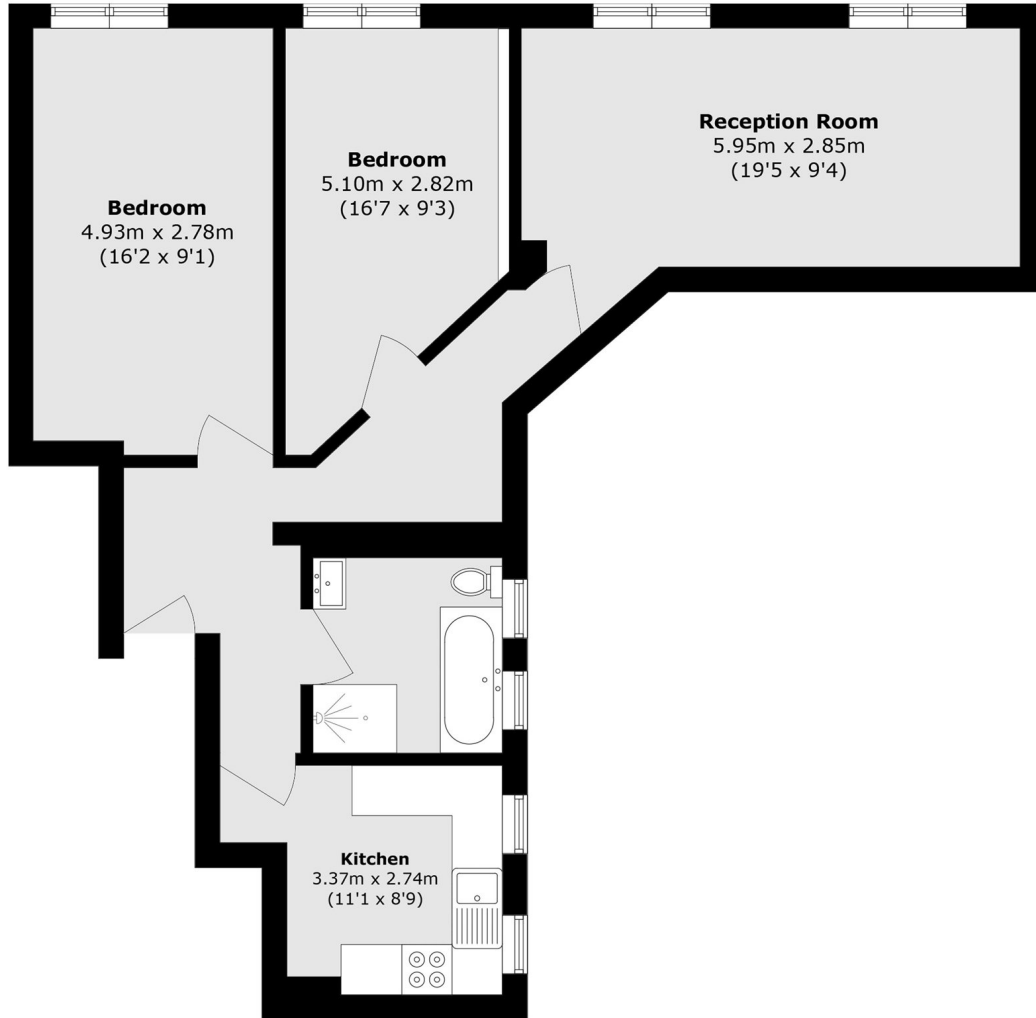


A larger than average flat comprising a newly refurbished kitchen and bathroom, two double bedrooms, and a light and airy reception room. Boasting high ceilings and an abundance of character throughout, this charming property offers spacious and well-presented accommodation ideal for comfortable modern living.

Ideally located for local amenities including Elizabeth Line at West Ealing. An array of shops & restaurants to choose from along Uxbridge Road.

- Two bedroom • Leasehold • Elizabeth Line •
 - An Array Of Shops & Parks • Excellent Condition • Ideal Location •
-





Total area (approx.): 70.2 sq. m (755.6 sq. ft)

Robertson Smith & Kempson Ealing Sales
1 The Broadway, London,
W5 2NT
020 8840 7677
ealingsales@robertsonsmithandkempson.co.uk

Energy Rating: D. We aim to make our particulars both accurate and reliable. However they are not guaranteed; nor do they form part of an offer or contract. If you require clarification on any points then please contact us, especially if you're traveling some distance to view. Please note that appliances and heating systems have not been tested and therefore no warranties can be given as to their good working order.