

For Sale



LCP/PrivateOffice
est.1990

Orsett Terrace, Paddington W2

+44 (0) 207 723 1733 / sales@lcpprivate.com

£500,000

Orsett Terrace, Paddington W2

£500,000

Set within an attractive Victorian terrace, this is a second floor (no lift), one bedroom flat with the benefit of access to a large communal garden.

The accommodation comprises a spacious reception room, separate kitchen, bedroom and bathroom. There is access from the building to the communal gardens at the rear of the building.

Orsett Terrace is situated between Notting Hill and Paddington, close to Westbourne Grove. The closest underground station is Royal Oak (Circle, Hammersmith & City lines) but it is also convenient for Paddington (Great Western, Heathrow Express, Elizabeth, Bakerloo, Circle, District and Hammersmith & City lines). The large open spaces of Kensington Gardens and Hyde Park are also close by.

Asking Price: £500,000 STC

Lease: c.963 years plus Share of Freehold

Council Tax: Westminster Band C

Service Charge: £4,463.28 per annum

Ground Rent: Peppercorn

Current EPC Rating: 74 (C)

Potential EPC Rating: 81 (B)





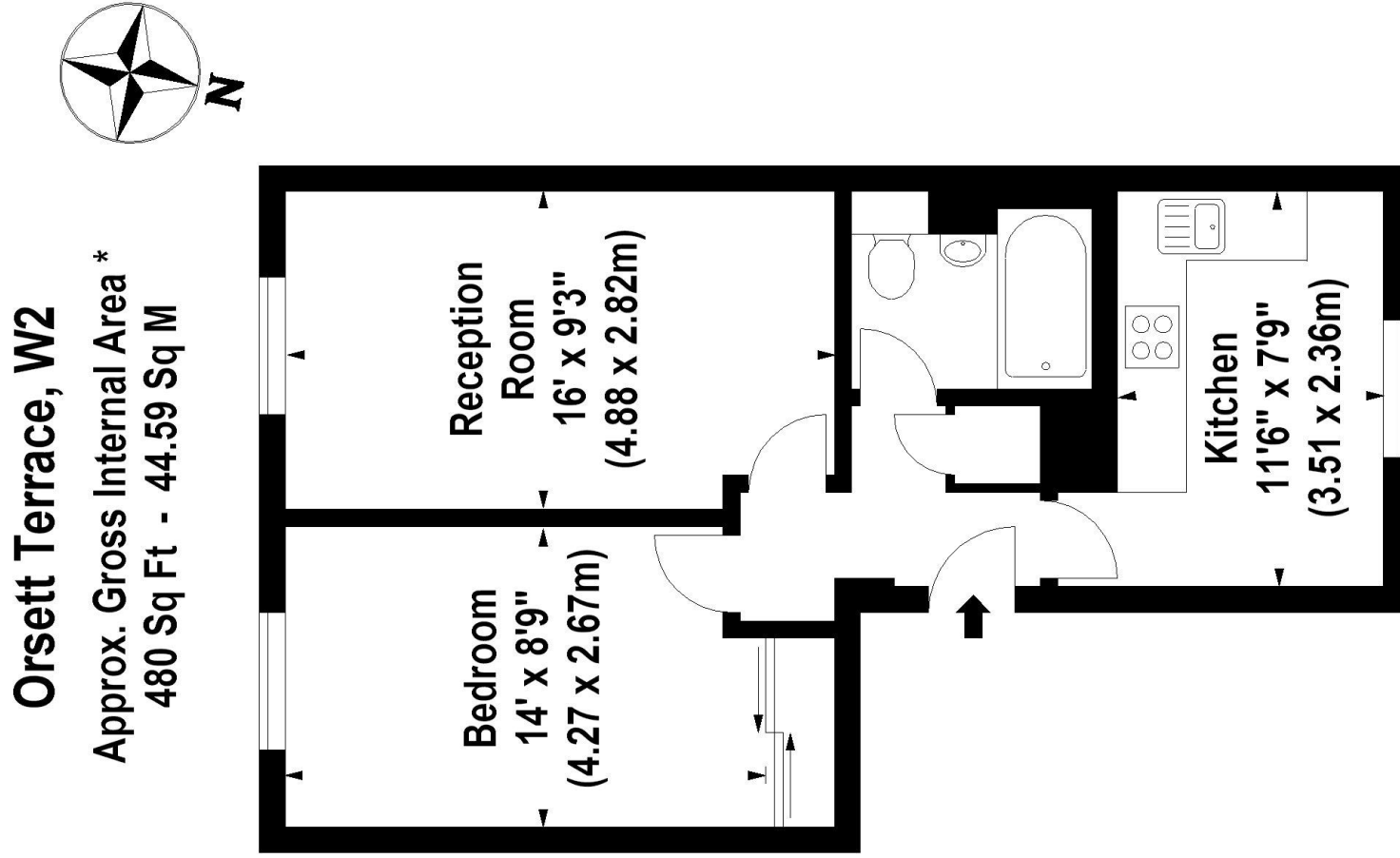
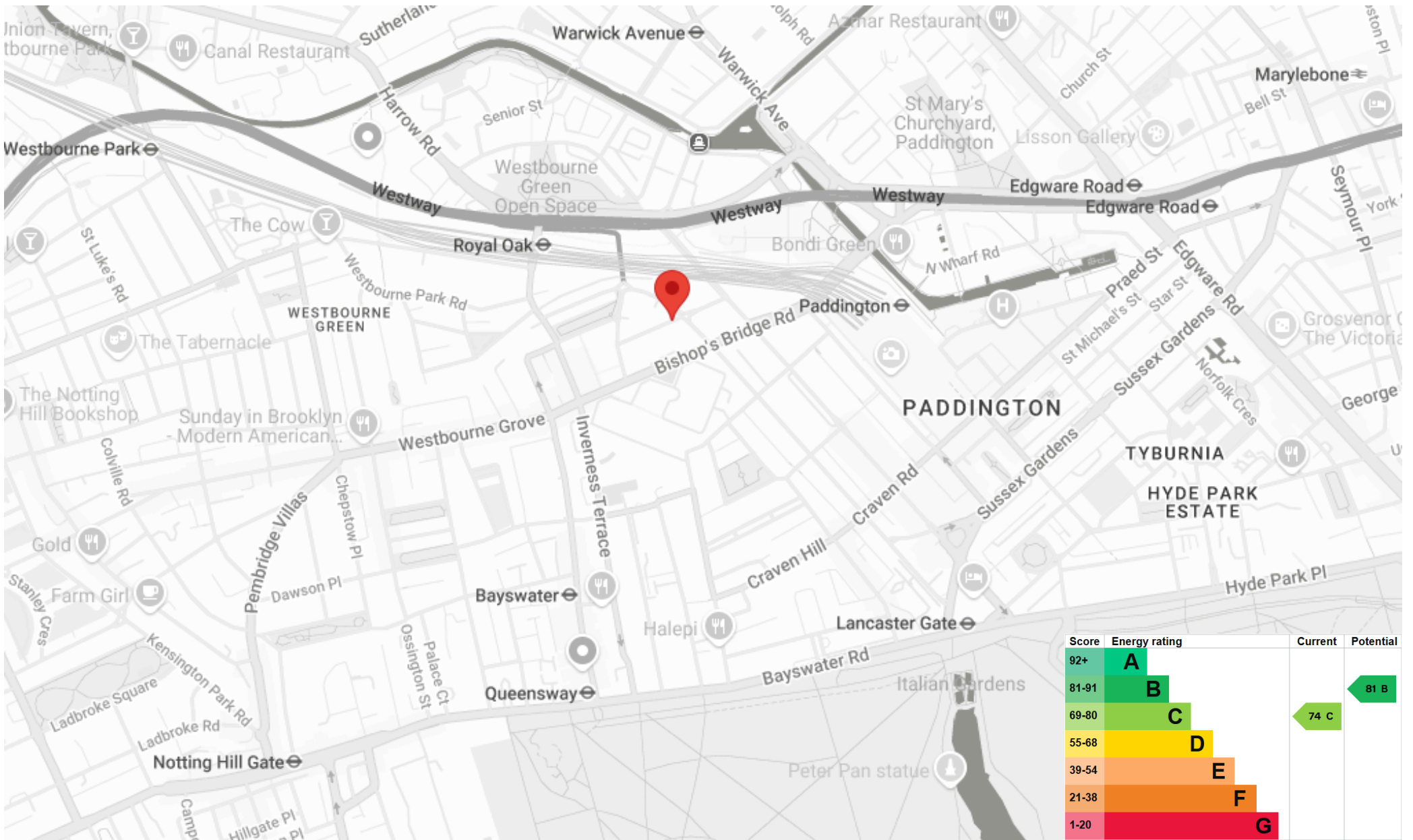


Illustration For Identification Purposes Only. Not To Scale
*Floorplans Drawn According To RICS Guidelines
Floorplans Supplied By Totalvista
Tel : 07976 232758 www.totalvista.net
Copyright Totalvista 2005 (br)

Please note none of the statements contained in these particulars as to this property are to be relied on as statements or representation of fact. It should also be noted that amenities and appliances have not been tested.

Orsett Terrace, Paddington W2



LCP

est.1990

+44 (0)207 723 1733
LCP House, Ogle Street,
London, W1W 6HU

contact@lcpprivate.com