



Manor Road, Astley

Manchester



£295,000

Manor Road

Tyldesley, Manchester

Deceptively Spacious Three Bedroom Semi-Detached Property Occupying a Large Plot – Boasting Two Reception Rooms and a Driveway for Several Cars, Located in the Popular Astley Area – Viewing is a Must!

Council Tax band: C

Tenure: Leasehold

- Deceptively Spacious Three Bedroom Semi-Detached Property Located in the Popular Astley Area
- Generously-Sized Family Lounge and a Sizeable Dining Room
- Benefits from a Downstairs W/C
- Large Modern Fitted Kitchen
- Three Well-Proportioned Bedrooms
- Modern Three-Piece Family Bathroom
- Driveway to the Front Providing Ample Off-Road Parking
- Detached Garage to the Rear for Storage
- Large Garden to the Rear with Laid-to-Lawn Grass, Paving and Mature Plants
- Close to Excellent Transport Links into Manchester and Warrington



HILLS



Entrance Hallway

Lounge

10' 9" x 18' 3" (3.27m x 5.55m)

Dining Room

9' 9" x 17' 5" (2.97m x 5.30m)

Kitchen

22' 7" x 9' 10" (6.88m x 3.00m)

Downstairs W.C.

5' 4" x 6' 4" (1.63m x 1.92m)

Landing

Bedroom One

17' 7" x 17' 5" (5.35m x 5.30m)

Bedroom One

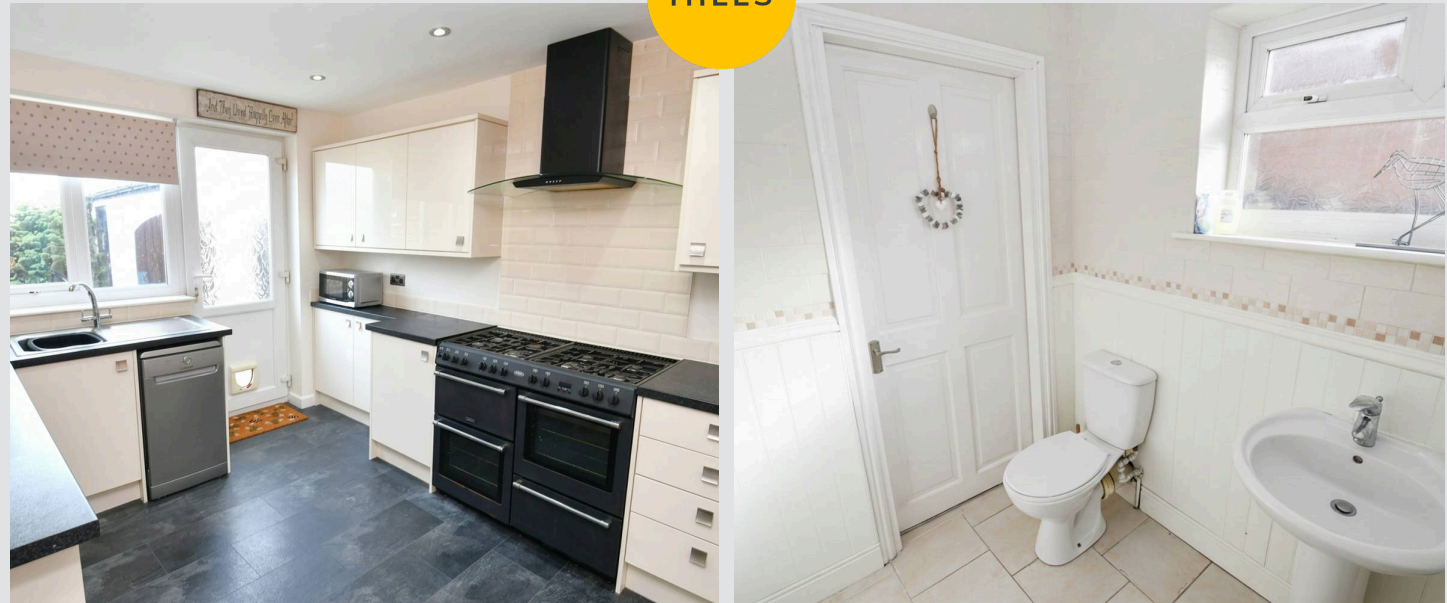
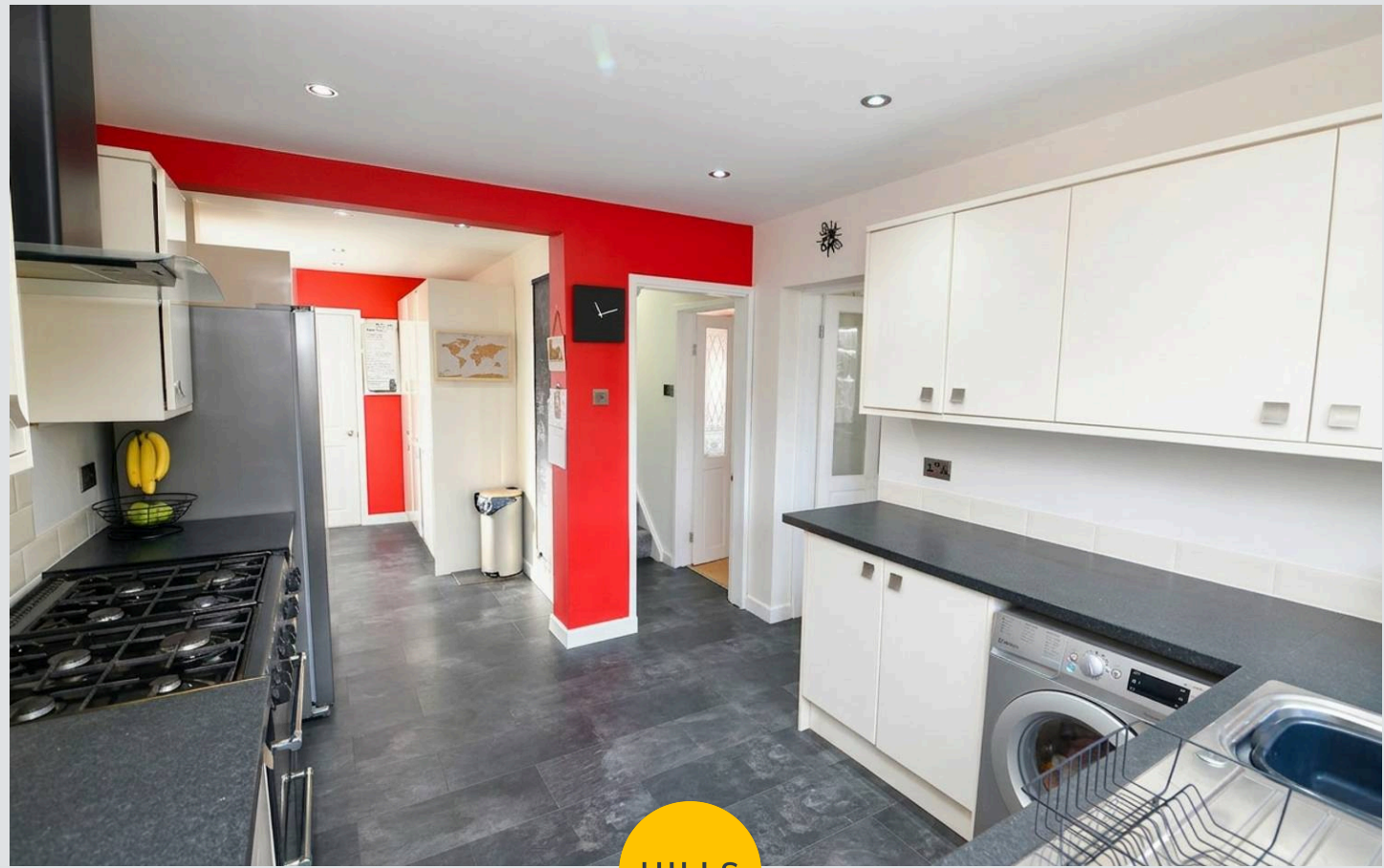
11' 7" x 9' 9" (3.53m x 2.98m)

Bedroom Three

8' 1" x 6' 9" (2.46m x 2.07m)

Bathroom

3' 7" x 11' 0" (1.09m x 3.35m)



Entrance Hallway

Lounge

10' 9" x 18' 3" (3.27m x 5.55m)

Dining Room

9' 9" x 17' 5" (2.97m x 5.30m)

Kitchen

22' 7" x 9' 10" (6.88m x 3.00m)

Downstairs W.C.

5' 4" x 6' 4" (1.63m x 1.92m)

Landing

Bedroom One

17' 7" x 17' 5" (5.35m x 5.30m)

Bedroom One

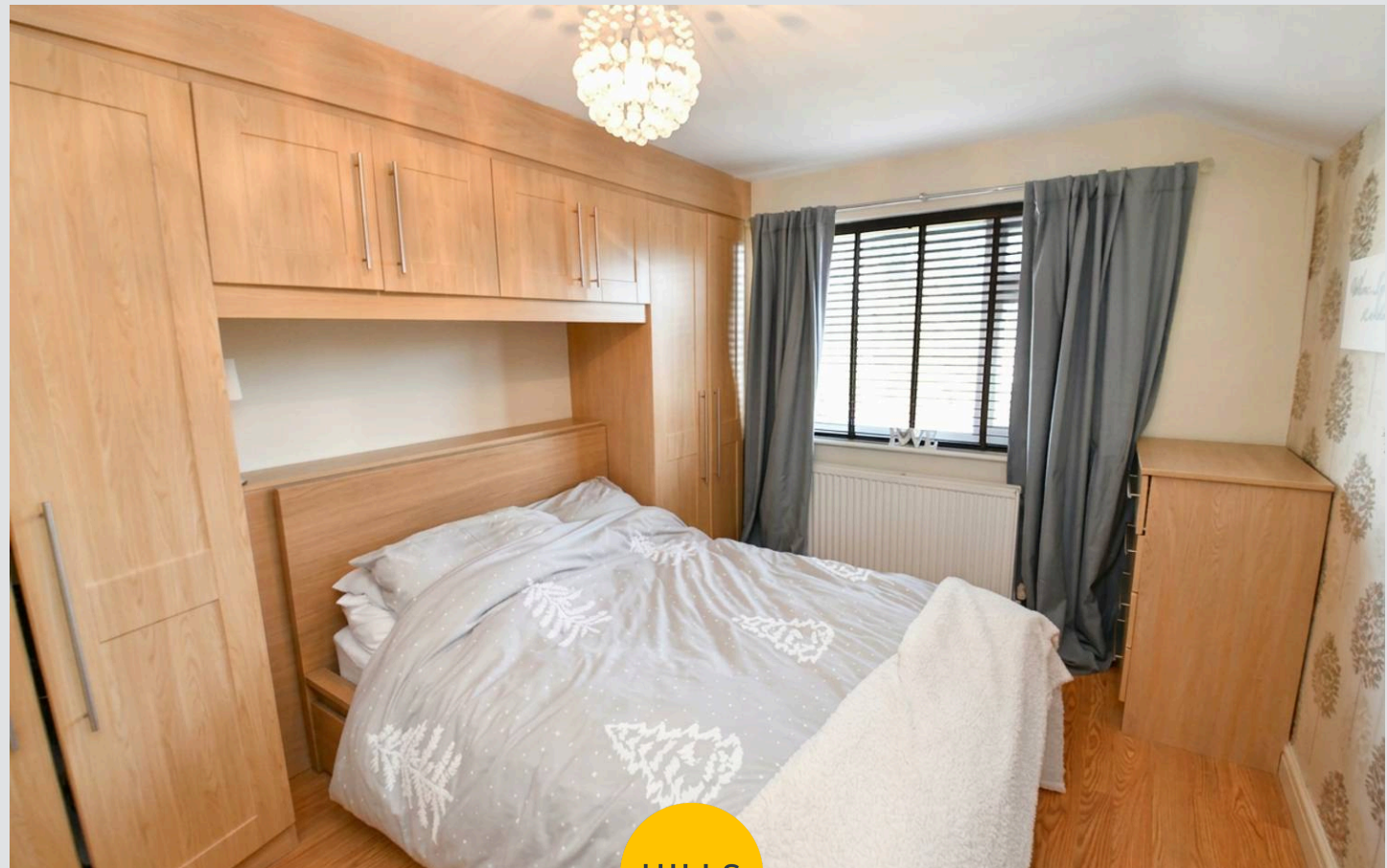
11' 7" x 9' 9" (3.53m x 2.98m)

Bedroom Three

8' 1" x 6' 9" (2.46m x 2.07m)

Bathroom

3' 7" x 11' 0" (1.09m x 3.35m)



Entrance Hallway

Lounge

10' 9" x 18' 3" (3.27m x 5.55m)

Dining Room

9' 9" x 17' 5" (2.97m x 5.30m)

Kitchen

22' 7" x 9' 10" (6.88m x 3.00m)

Downstairs W.C.

5' 4" x 6' 4" (1.63m x 1.92m)

Landing

Bedroom One

17' 7" x 17' 5" (5.35m x 5.30m)

Bedroom One

11' 7" x 9' 9" (3.53m x 2.98m)

Bedroom Three

8' 1" x 6' 9" (2.46m x 2.07m)

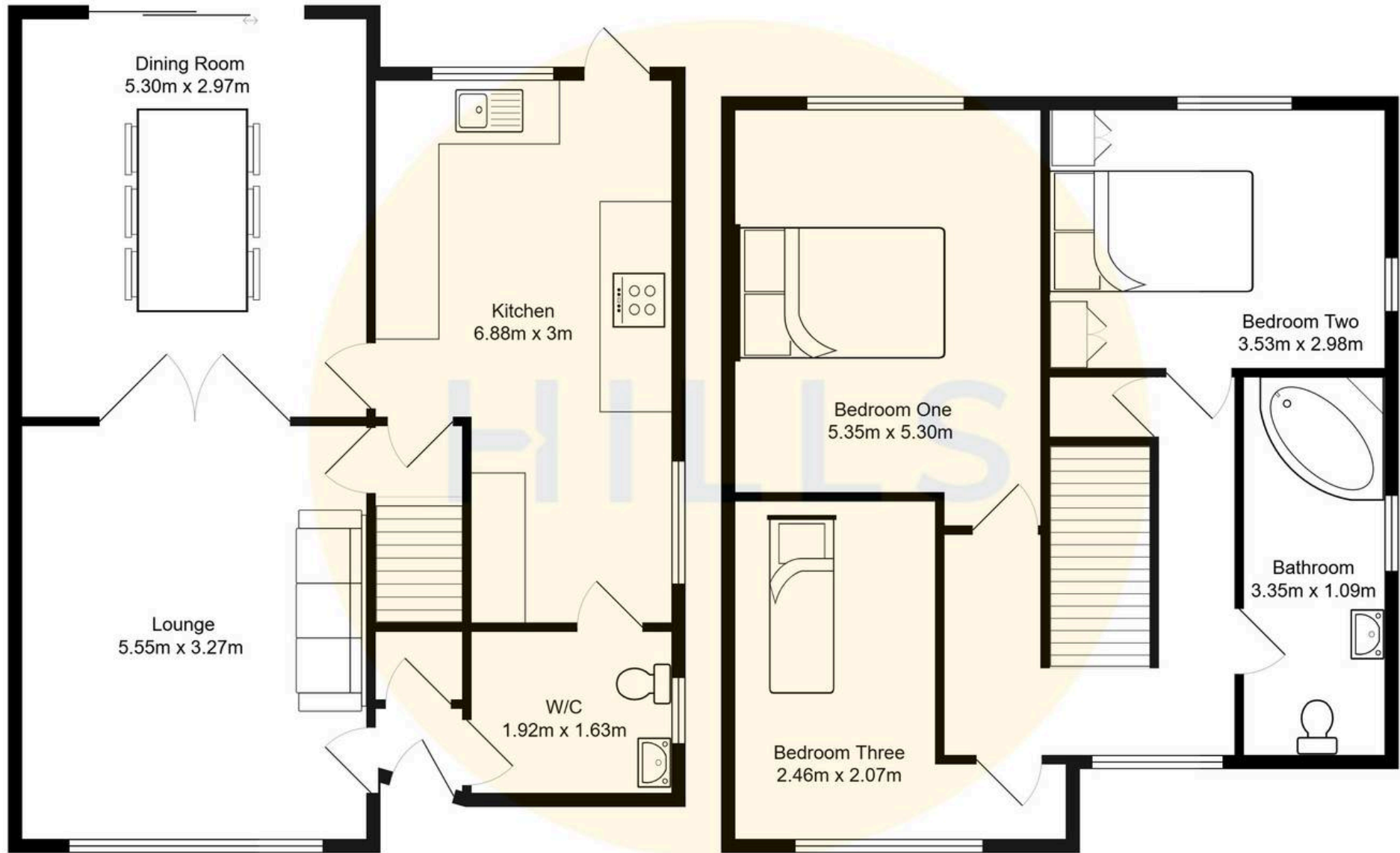
Bathroom

3' 7" x 11' 0" (1.09m x 3.35m)



HILLS







HILLS

Hills | Salfords Estate Agent

Hills Residential, Sentinel House Albert Street – M30 0SS

0161 707 4900

sales@hills.agency

www.hills.agency/



By law, we are required to conduct anti-money laundering checks on all potential buyers and sellers. In line with HMRC guidelines, our trusted partner, Coadjute, will securely manage these checks on our behalf. A non-refundable fee of £45 + VAT per person will apply, and Coadjute will handle the payment. Once an offer is accepted, Coadjute will send a secure link for you to complete the biometric checks. These checks must be completed before we can send the memorandum of sale to all parties. PLEASE NOTE: The Agent has not tested any equipment, fixtures, fittings or services so cannot verify that they are in working order or fit for the purpose. References to the properties tenure are based on information supplied by the seller. You are advised to check the availability of this property before travelling any distance to view. Every effort has been made to ensure these particulars are correct and not misleading but their accuracy is not guaranteed nor do they form part of any contract.