



Shenfield Hall, Hall Lane

Shenfield, Brentwood

Welcome to Shenfield Hall. A significant, Listed (Grade II) residence of genuine stature, and a fine example of early architecture set within approximately 3.5 acres of private grounds, yet, quite,

Council Tax band: H

Tenure: Freehold

- Grade II listed
- 3.5 acres of private grounds
- Rich in original period features
- Prime location within Shenfield
- Range of outbuildings, including former stables, stores and a substantial workshop
- Self contained annexe





Shenfield Hall, Hall Lane

Shenfield

Welcome to Shenfield Hall. A significant, Listed (Grade II) residence of genuine stature, and a fine example of early architecture set within approximately 3.5 acres of private grounds, yet, quite remarkably, positioned within walking distance of Shenfield station.

While there are other substantial homes within reach of the station, we are unaware of another that offers this combination of land, scale, architectural presence and historic character so close to such a well-connected location. It is a rare balance of country seclusion and commuting convenience.

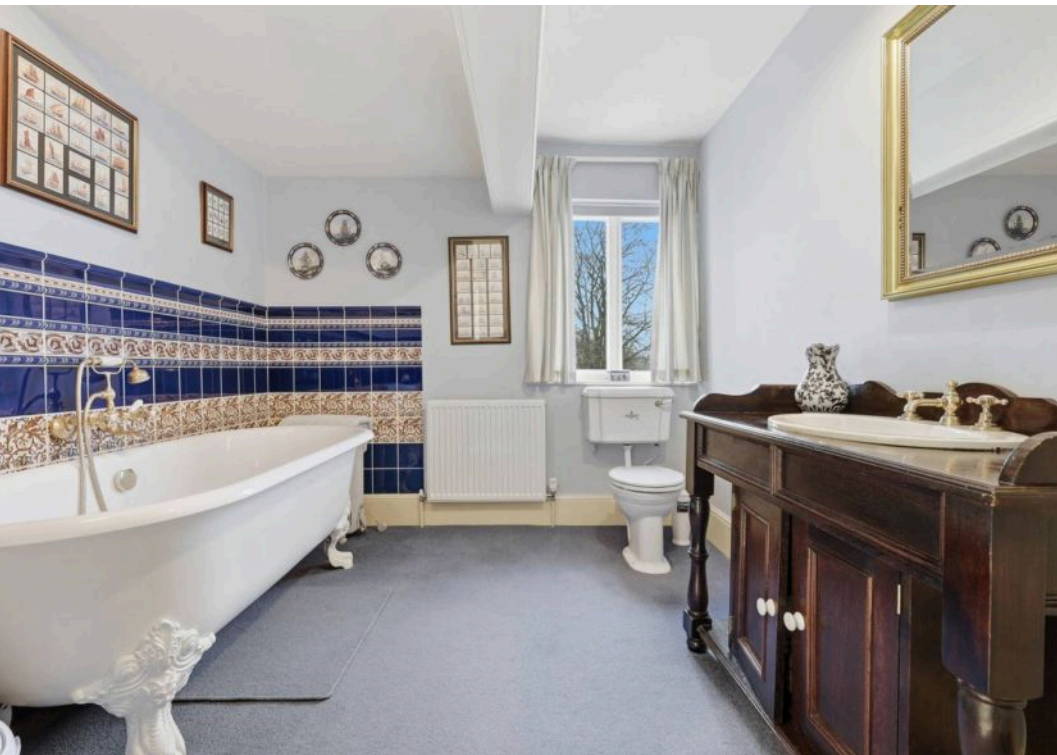
The house itself is beautifully proportioned, arranged over two floors and rich in original features. Exposed timbers, inglenook fireplaces, open hearths and traditional joinery speak to its heritage, while the principal reception rooms offer generous ceiling heights and well-balanced windows framing views across the gardens, reinforcing the open aspects and setting throughout.

At the heart of the home is a spacious kitchen/breakfast room, well suited to modern family life, complemented by formal sitting and dining rooms that lend themselves naturally to entertaining on a more considered scale. The layout flows comfortably, yet each room retains its own character and sense of purpose.

To the first floor are six well-proportioned bedrooms, including a particularly impressive principal suite. In total, there are five bathrooms,









HALL LANE

Approx. Gross Internal Area 659.4 Sq M (7098.2 Sq Ft)



PERIOD HOMES



Ground Floor

Approx. 209.2 sq. metres (2251.7 sq. feet)

First Floor

Approx. 192.8 sq. metres (2075.4 sq. feet)



Measurements are approximate and for illustration purposes only. While we do not doubt the accuracy and completeness, we advise you conduct a careful independent assessment of the property to determine monetary value.

About Us

From charming cottages to country estates, all our homes have a story to tell. 'Period Homes' is one of a kind, an agency dedicated to the sale of character and period properties across Essex.

If you would like to buy a period home but you have a modern home to sell first, we can assist via our sister company, Walkers, which just so happens to have been voted Britain's Best Estate Agency in the British Property Awards. That way, both elements of your move are in the very best of hands.

Get In Touch



Browse Properties



Contact Us
01277 288000



Our Website
periodhomes.co.uk



Our Address
Eaton House
High Street
Ingestone
CM4 9DW



PERIOD
HOMES

Psst... Have you heard of
discreet marketing?

Many people lose out on their dream home to someone in a better position.

Often, it is because they have delayed putting their house on the market, preferring to find somewhere first and then sell.

That is why we have innovated a totally unique and high confidential moving home solution to put you in a competitive position.

Let us find you a buyer without any advertising or pressure and without the neighbours knowing.

Your secret is safe with us...

Get in touch for a
complimentary valuation.

Looking To Sell Or Let Your Home?

Book your free valuation to see how much your home is worth.