



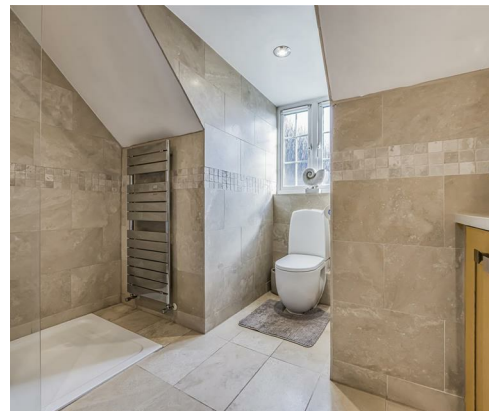
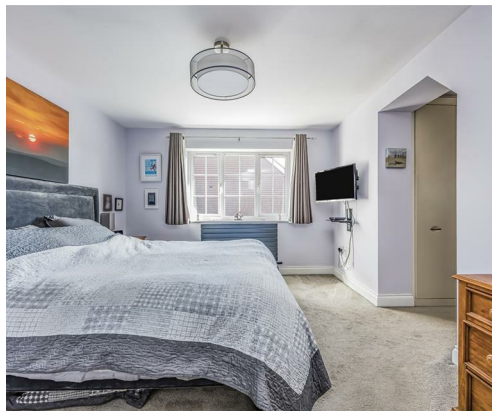


A generously sized five-bedroom detached family home, ideally located in the highly sought-after area of Horndean, with a lovely park just along the road—perfect for families. Offering just under 2,000 sq ft of internal living space, the property provides plenty of room to grow and enjoy.

The ground floor comprises a welcoming hallway with stairs to the first floor and under stair storage, study, cloakroom, generous lounge with bay window and French doors to the garden, fitted kitchen with integrated appliances open plan with the dining area with French doors to the garden and a utility room with side access to the driveway.

To the first floor are five bedrooms, including a master bedroom with dressing area and en-suite bathroom. There is also a family bathroom and additional storage from the landing.

Externally, the property offers a driveway providing off road parking leading to a garage. The rear garden is mainly laid to lawn with scattered shrubs and a large composite decking area spanning across the rear elevation.



- FIVE BEDROOM DETACHED FAMILY HOME
- GENEROUS DUAL ASPECT LOUNGE
- FITTED KITCHEN WITH APPLIANCES
- DRIVEWAY AND GARAGE
- SEPARATE STUDY/HOME OFFICE
- SEPARATE UTILITY ROOM
- MASTER BEDROOM WITH DRESSING AREA AND EN-SUITE
- HIGHLY REQUESTED HORNDEAN LOCATION
- SPACIOUS AND VERSATILE ACCOMMODATION
- PRIVATE REAR GARDEN

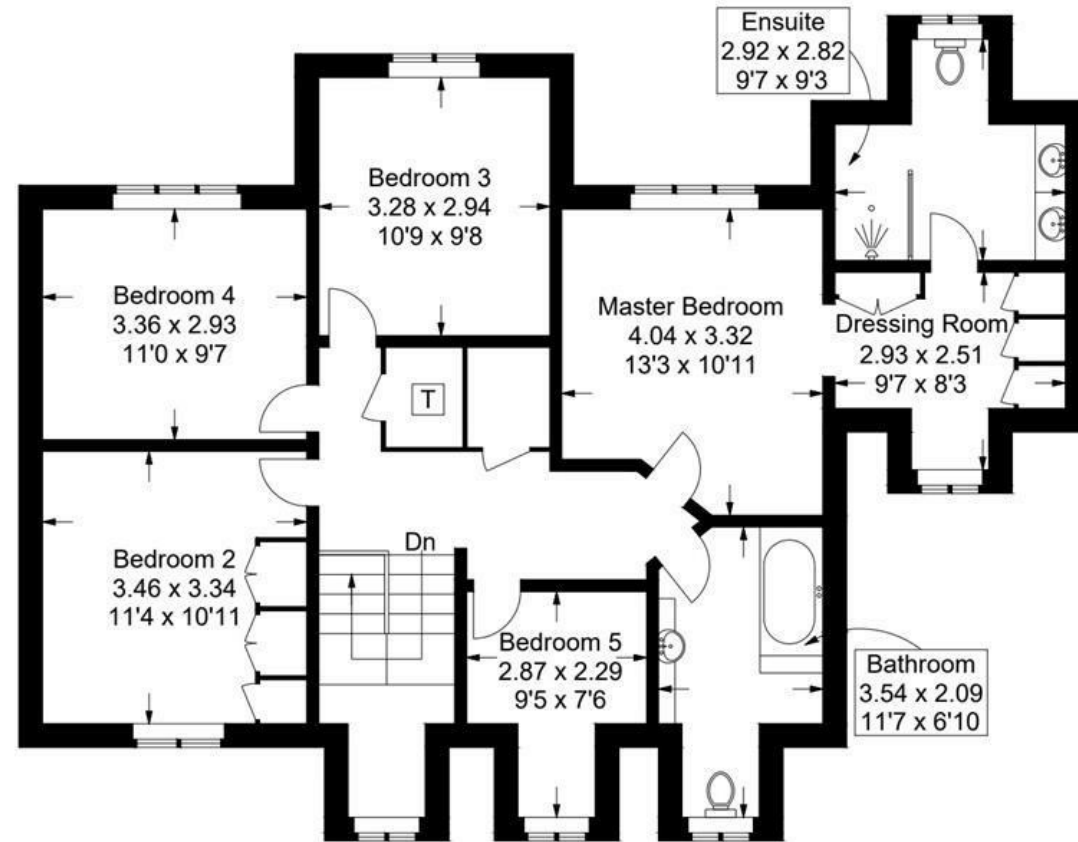
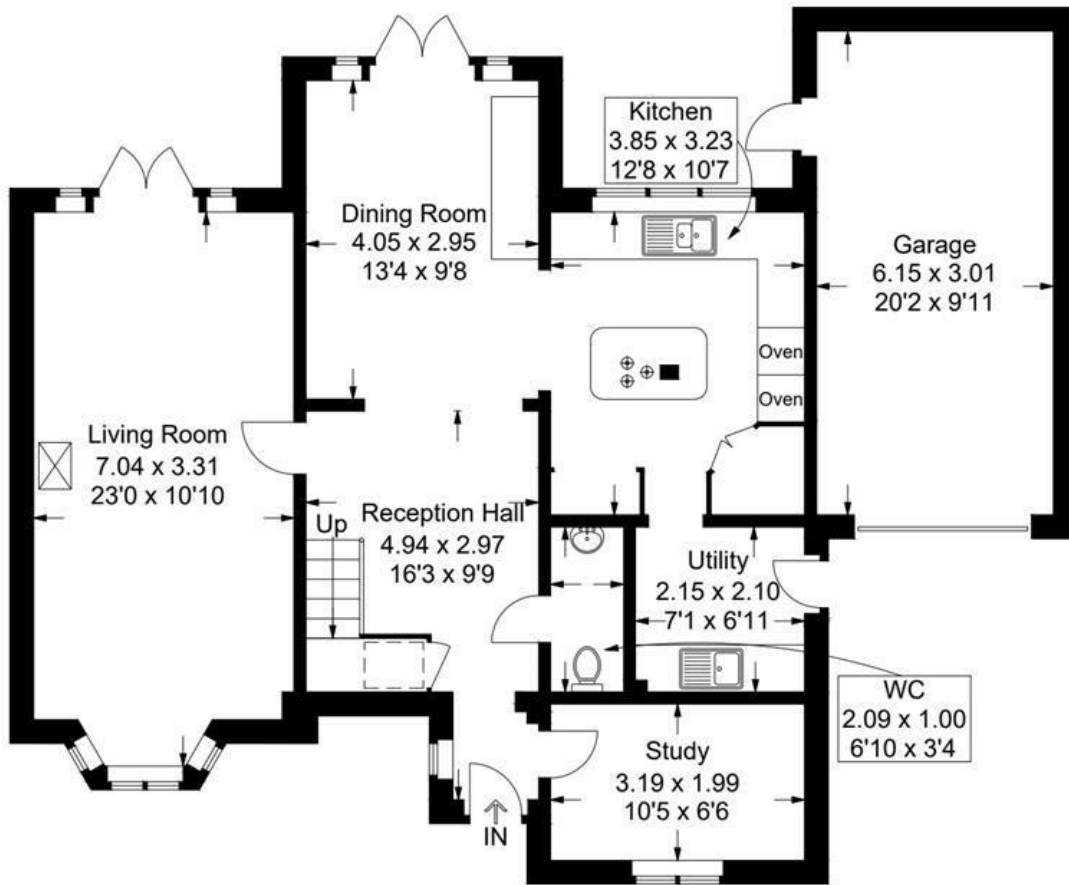
Letcombe Place, Horndean

Approximate Gross Internal Area = 181.4 sq m / 1952 sq ft

(Excluding Reduced Headroom / Eaves)

Reduced Headroom = 0.4 sq m / 4 sq ft

Total = 181.8 sq m / 1956 sq ft



Ground Floor

First Floor

= Reduced headroom below 1.5m / 5'0"

This plan is for layout guidance only. Not drawn to scale unless stated. Windows and door openings are approximate. Whilst every care is taken in the preparation of this plan, please check all dimensions, shapes and compass bearings before making any decisions reliant upon them.