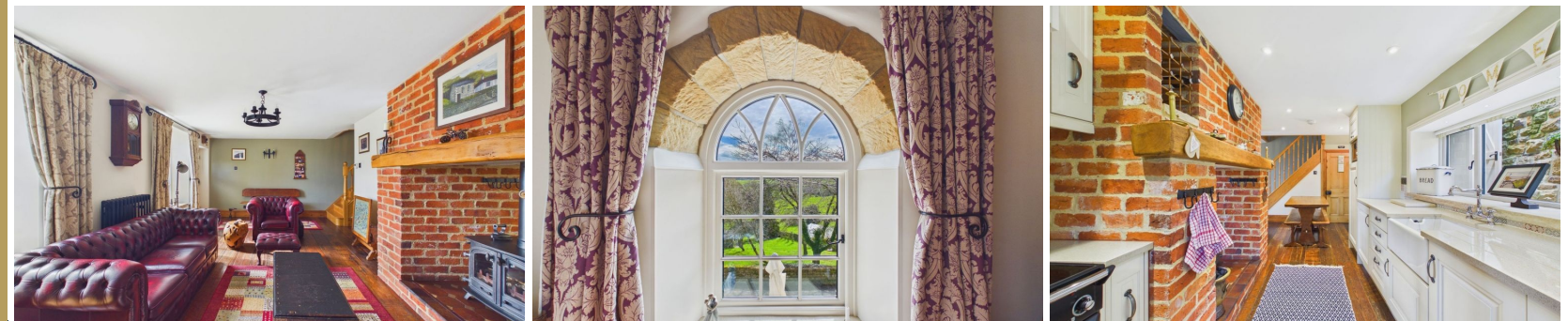




01947 601301



THE OLD CHAPEL, HOULSYKE

3 BED CHARACTER PROPERTY



WWW.HOPEANDBRAIMESTATEAGENTS.CO.UK



PROPERTY FEATURES

- Converted Chapel in an Idyllic Rural Setting
- Immaculately Restored with Period Features
- Exposed Stonework, Arched Windows & Timber Beams
- Lounge & Kitchen/Diner with Double-Sided Stove
- 2 Double Bedrooms & Luxurious Bathroom Suite
- Downstairs 3rd Bedroom/Study & Utility
- Oil Central Heating & Double-Glazing Throughout
- South-Facing Terrace & Tiered Gardens
- Garage, Off-Street Parking & Outbuildings

Type: CHARACTER PROPERTY

Availability: FOR SALE

Bedrooms: 3

Bathrooms: 1

Reception Rooms: 2

Parking: OFF ROAD PARKING
Outside Space: GARDEN, PATIO,
TERRACE

Tenure: FREEHOLD

01947 601301

www.hopeandbraimstateagents.co.uk



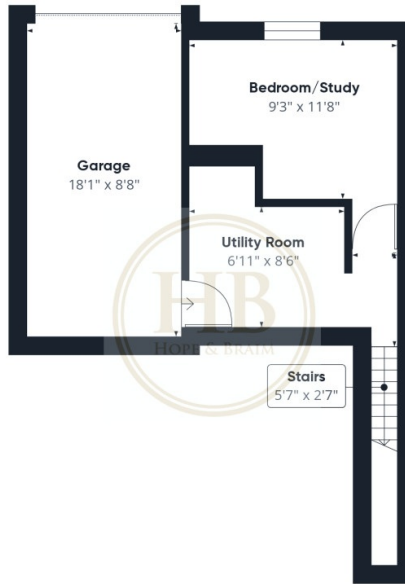
THE OLD CHAPEL, HOULSYKE- 3 bed Character Property -£475,000



Hope & Braim are delighted to present The Old Chapel, a beautifully converted former chapel occupying an idyllic position within the North York Moors National Park, enjoying stunning open views across the surrounding moorland landscape. This immaculately restored property retains a wealth of period character throughout, with exposed stonework, soaring timber beams and striking arched windows all combining to create an interior of genuine distinction. The conversion has been carried out with evident care, successfully balancing original architectural features with the requirements of comfortable contemporary living. The principal reception space is a generous lounge, where the drama of the chapel's original proportions is keenly felt. This flows into a well-appointed kitchen/diner, the heart of which is a double-sided stove serving both rooms, an arrangement both practical and atmospheric. On the lower ground floor, a further room provides flexible accommodation suitable as a third bedroom or study, alongside a dedicated utility room. To the first floor, two well-proportioned double bedrooms make excellent use of the building's character, with the arched windows framing views that vary with the seasons. These are served by a luxurious bathroom suite, finished to a high standard. Practical provisions include oil central heating and double-glazing throughout, a garage, generous off-street parking and a range of useful outbuildings, well suited to the demands of rural living. A highlight is the stone terrace that enjoys a southerly aspect and boasts elevated views across the valley below. The setting at Houlsyke, close to the village of Danby, is one of genuine tranquillity, within the heart of the North York Moors and with ready access to the surrounding countryside. A property of this individuality and quality commands an early viewing, and one is strongly recommended.



THE OLD CHAPEL, HOULSYKE- 3 bed Character Property -£475,000



Floor 0



Floor 1

Floor 2

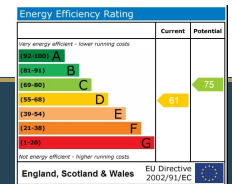


Approximate total area⁽¹⁾
1145 ft²

(1) Excluding balconies and terraces

Calculations reference the RICS IPMS 3C standard. Measurements are approximate and not to scale. This floor plan is intended for illustration only.

GIRAFFE360



Disclaimer: This brochure and property details are a representation of the property offered for sale or rent, as a guide only. Brochure content must not be relied upon as fact and does not form any part of a contract. Measurements are approximate. No fixtures or fittings, heating system or appliances have been tested, nor are they warranted by Hope & Braim or any staff member in any way as being functional or regulation compliant.

Hope & Braim do not accept any liability for any loss that may be caused directly or indirectly by the brochure content, all interested parties must rely on their own, their surveyor's or solicitor's findings.

We advise all interested parties to check with the local planning office for details of any application or decisions that may be consequential to your decision to purchase or rent any property.

Any floor plans provided should be used for illustrative purposes only and should be used as such by any interested party.

