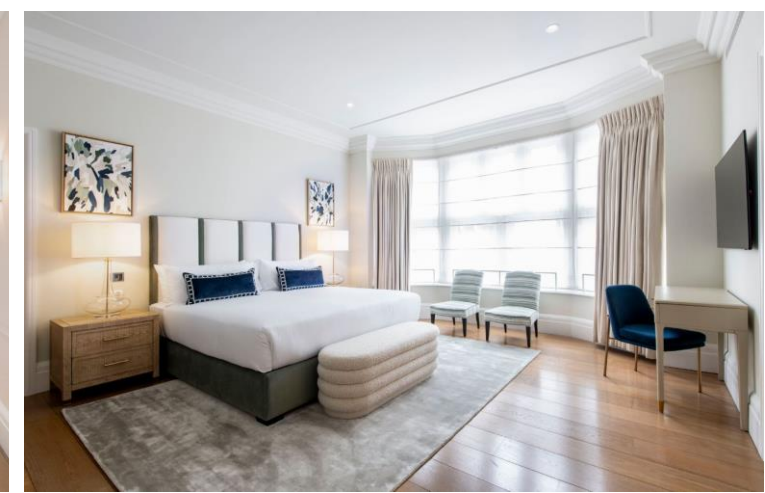




Duke Street  
Mayfair, W1K

CHESTERTONS







A recently refurbished and interior designed three bedroom lateral apartment benefiting from access to its own large terrace, three double bedrooms all with own en-suites, separate fully equipped kitchen and on-site porter and lift service.

- Lateral first floor flat
- Three bedrooms
- Three bathrooms
- Own private terrace

**£27,733.33 pcm**

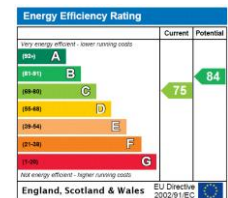
Additional tenant charges apply (fees apply to non-AST tenancies only)

Tenancy Agreement Fee: £300

References per Tenant/Guarantor: £60

Inventory check (approx. £100 – £250 inc. VAT)

[chestertons.co.uk/property-to-rent/applicable-fees](http://chestertons.co.uk/property-to-rent/applicable-fees)



**Minimum Term:** 12 months  
**Deposit Required:** £38,400.00  
**Local Authority:** City of London  
**Council Tax Band:** H  
**EPC Rating:** C  
**Furnished, Part Furnished**

**Chestertons Mayfair Lettings**

47 South Audley Street  
 Mayfair  
 London  
 W1K 2QA

[mayfairlettingsusers@chestertons.co.uk](mailto:mayfairlettingsusers@chestertons.co.uk)  
 020 7288 8301





FIRST FLOOR

APPROX. GROSS INTERNAL AREA \*  
2382 Ft<sup>2</sup> - 221.29 M<sup>2</sup>

Property Details:

FLAT 1.02  
65 DUKE STREET  
W1

Plans Drawn: 12.05.2016

Surveyed and Drawn By:



Sunnyhill House  
3-7 Sunnyhill Road  
London, SW16 2UG

Tel: 0845 257 2023  
Fax: 0845 257 2024  
info@bkrfloorplans.co.uk  
www.bkrfloorplans.co.uk  
C BKR 2016

