



jt | JORGENSENTURNER



Brondesbury Road,  
Kilburn, NW6

Asking Price £325,000



1



1



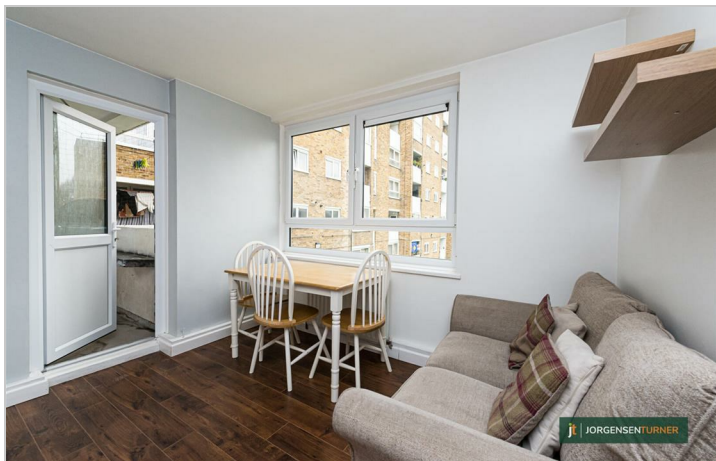
1



jt

# Brondesbury Road, Kilburn, NW6

Asking Price £325,000



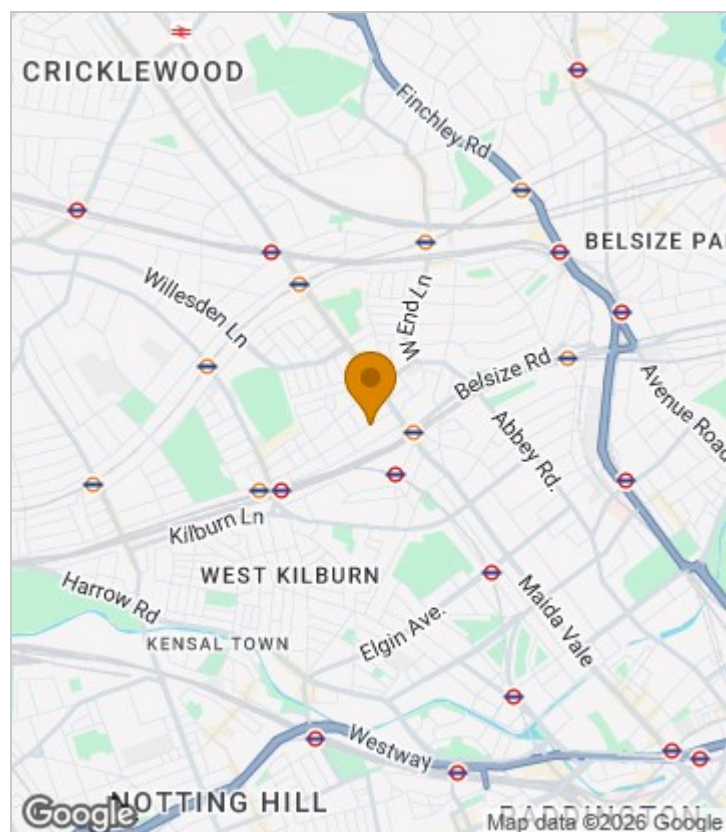
## Summary Description

A lovely one bedroom propose built flat set within this well regarded development close to the amenities of Kilburn High Road and just a short walk form the green open spaces of Queens Park.

Highlights of this particular flat include being situated on the first floor with both lift access and having access via a level walkway to Kilburn High Road. A light and airy feel throughout, with access to a private balcony. Additionally both the kitchen and bathroom have been thoughtfully updated.

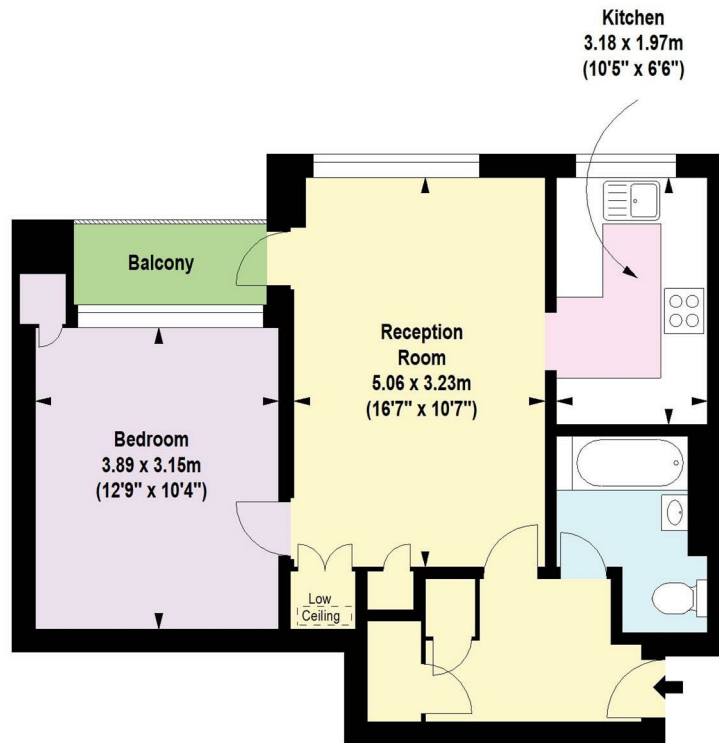
The property is offered for sale with no onward chain and would make a great first home or investment purchase.

## Area Map





# Floor Plan



Second Floor

For Identification Purposes Only. Not To Scale. © www.totalvista.uk 2022

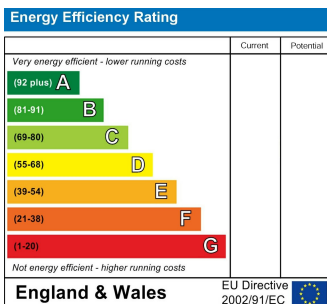


Varley House, NW6

Approx. Gross Internal Area  
49.05 Sq M - 528 Sq Ft



## Energy Efficiency Graph



## Viewing

Please contact our Sales QP Office on 0207 604 4040 if you wish to arrange a viewing appointment for this property or require further information.

For further information contact:

Sales QP, 2a Brondesbury Road, London, NW6 6AS

Tel: 0207 604 4040 Email: [info@jorgensenturner.com](mailto:info@jorgensenturner.com) <https://www.jorgensenturner.com/>

### Disclaimer

These particulars, whilst believed to be accurate are set out as a general outline only for guidance and do not constitute any part of an offer or contract. Intending purchasers should not rely on them as statements of representation of fact, but must satisfy themselves by inspection or otherwise as to their accuracy. No person in this firm's employment has the authority to make or give any representation or warranty in respect of the property.