



Flat 9a Wickham Avenue, Bexhill-On-Sea, TN39 3EP

£895 PCM

Maltbys are delighted to present this recently decorated and newly carpeted two-double bedroom flat. This property benefits from built in storage, an open plan kitchen/living room and being located in the town centre, close to the seafront and local amenities.

Flat 9a Wickham Avenue, Bexhill-On-Sea, TN39 3EP

£895 PCM



- Two Bedrooms
- Convenient Transport Links
- Available From End of January
- Town Centre
- 2nd Floor Flat
- Close to Seafront
- EPC: D

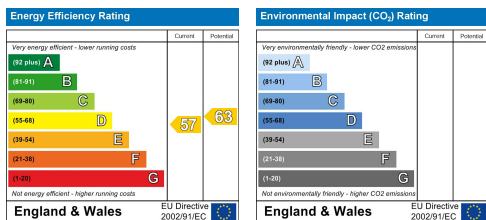
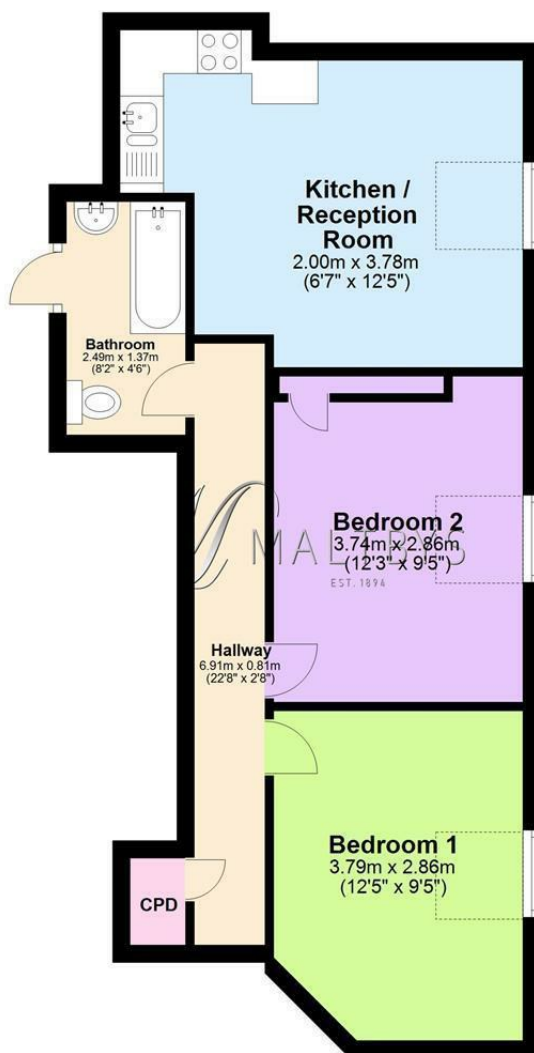


Directions

Tel: 01424 730678



Flat 9A, Wickham Av. Approx. 47.4 sq. metres (509.9 sq. feet)



These particulars, whilst believed to be accurate are set out as a general outline only for guidance and do not constitute any part of an offer or contract. Intending purchasers should not rely on them as statements of representation of fact, but must satisfy themselves by inspection or otherwise as to their accuracy. No person in this firms employment has the authority to make or give any representation or warranty in respect of the property.