



GATTON ROAD, SW17

£450,000

- Secure Modern Development
- Two Double Bedrooms
- Open Plan Kitchen / Reception
- Ground Floor
- Long Leasehold
- No Onward Chain



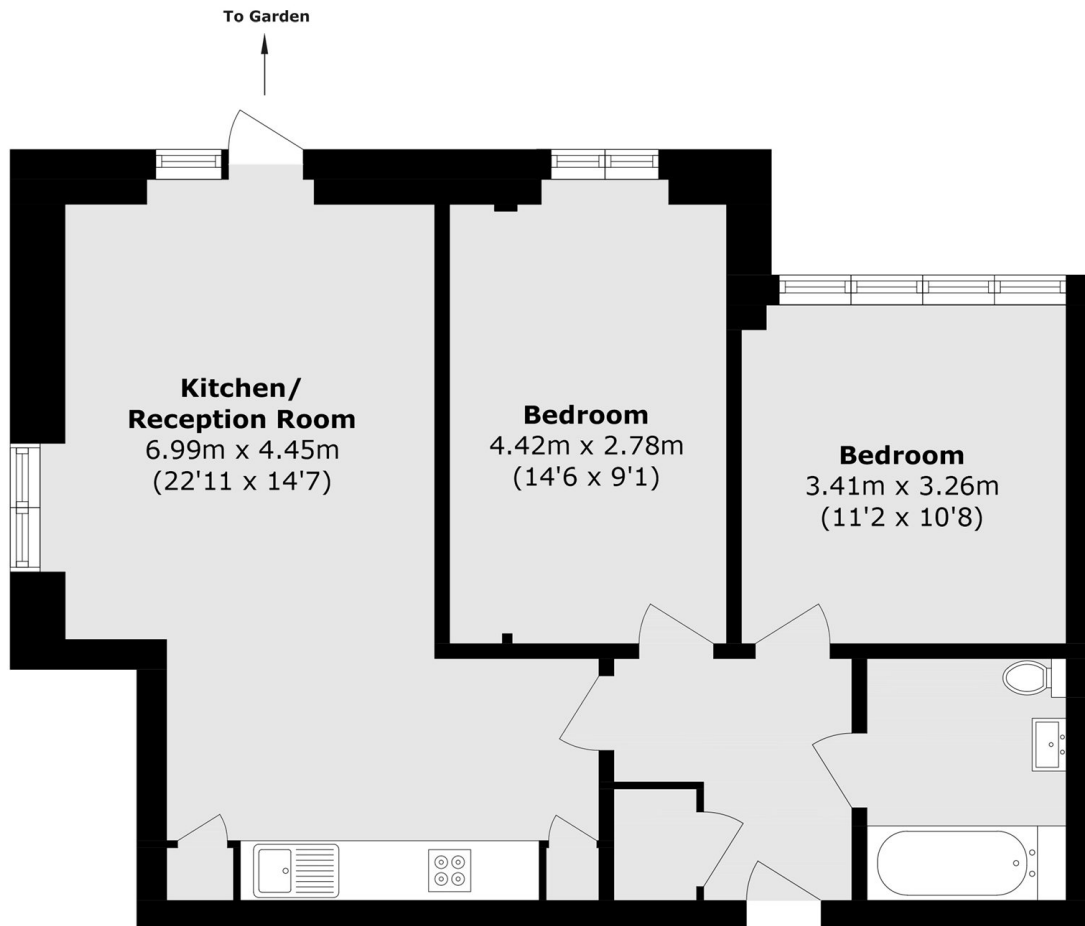


ABOUT THE HOME

A much larger than average, two double bedroom modern apartment. Located in the heart of Tooting. Laid across the ground floor of unimposing modern development, sold with a long lease and no onward chain. Internally the property amasses in excess of 700sqft and comprises; A very generous open plan kitchen / lounge with ample dining space and benefitting from dual aspect windows, flooding the ground floor with natural light. A stylish bathroom and finally two well proportioned double bedrooms, making the home ideal for a couple looking for a large guest room / home office combination. Ensham Court is located within moments of the vibrant hustle and bustle of Tooting Broadway market, Upper Tooting Road and the sought after Cafe culture.







Total area (approx.): 65.2 sq. m (701.8 sq. ft)

JACKSONS TOOTING

3 Upper Tooting Road, London,

SW17 7TS

Sales: 020 8487 3175

Lettings: 020 8487 3176

Energy Rating: We aim to make our particulars both accurate and reliable. However they are not guaranteed; nor do they form part of an offer or contract. If you require clarification on any points then please contact us, especially if you're traveling some distance to view. Please note that appliances and heating systems have not been tested and therefore no warranties can be given as to their good working order.