



Lady Margaret Road, N19

£625,000

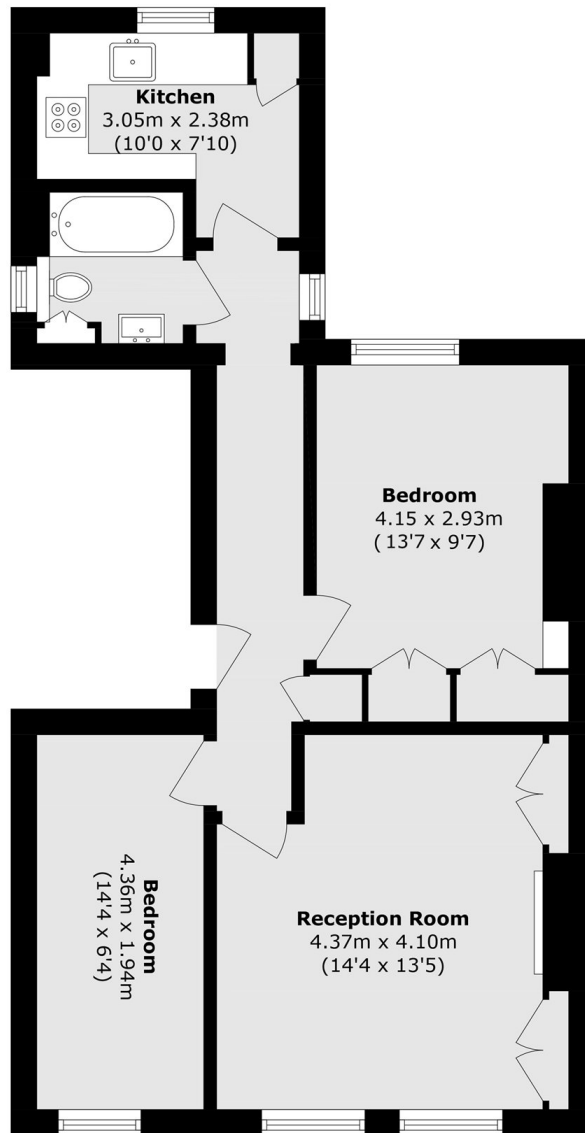
A recently refurbished two bedroom apartment set within a semi-detached Victorian conversion. This property offers a share of freehold, a separate reception room/kitchen, ample storage and no onward chain.

Lady Margaret Road is a premium road in Tufnell Park, close to Tufnell Park station (Northern line), Highgate Village, Hampstead Heath and all the amenities and local independents on Fortress Road.

Features

- Two Bedrooms
- Share of Freehold
- Chain Free
- Victorian Conversion
- Recently Refurbished
- Great Transport Links

Lady Margaret Road, London, N19



Total area (approx.): 55.8 sq. m (600.6 sq. ft)